



Westinghouse

INNOVATION YOU CAN BE SURE OF



Westinghouse Kitchen Accessories

Product Catalog
for North America

Westinghouse Heritage

Invention and Innovation

1846



George Westinghouse was born

1865



Westinghouse receives his first patent for a rotary steam engine

1869



Westinghouse patents the air brake, revolutionizing railroad safety

1869



Westinghouse Air Brake Company is founded

1923



Westinghouse pioneers the first international shortwave radio broadcast

1921



Westinghouse introduces the first factory-built radio receiver

1920



Westinghouse makes history with the first commercial radio broadcast in the country. Radio station KDKA begins operations

1917



Westinghouse introduces the first all-electric kitchen range

1916



Westinghouse introduces an innovative toaster that flips bread slices, toasting them evenly

1930



55,000 Westinghouse workers honor George Westinghouse by raising funds to build a memorial and garden in Pittsburgh's Schenley Park

1933



The world's fastest elevators are built for New York's Rockefeller Center

1937



Westinghouse Electric constructs the first atom smasher to explore the potential of nuclear energy as a practical power source

The Changing World

1939



Westinghouse makes an impression at the New York World's Fair with its Hall of Power and Elektro, the walking, talking robot

2002



Westinghouse works with NASA to develop the Eye Saver light bulb

2001



ENERGY STAR light bulbs, lighting fixtures and ceiling fans are introduced

1977



Westinghouse introduces the first airborne surveillance radar system

1969



Westinghouse cameras capture the first moonwalk for viewers back on earth

1968



Westinghouse introduces the first "Instant-On" Television

1871



Westinghouse Air Brake Company implements half-day Saturdays, a big step toward the five-day work week

1873



The automatic air brake is invented

1881



Westinghouse founds Union Switch and Signal Company to develop closed-track circuits and interlocking systems for railroads

1886



Westinghouse Electric Company is founded

1888



Nikola Tesla receives a patent for the first alternating current motor and comes to work for Westinghouse Electric Company

1914



Westinghouse acquires Copeman Electric Stove Company and enters the home appliance market

1914



George Westinghouse dies, leaving a legacy that includes 361 patents and the founding of 60 companies

1896



Westinghouse harnesses the power of Niagara Falls and builds the first hydroelectric power plant

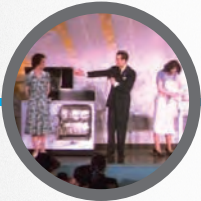
The Years of Growth

1893



Westinghouse beats Thomas Edison for the contract to light the Chicago World's Fair with AC power and wins the "War of the Currents."

1939



Westinghouse hosts the Battle of the Centuries Dishwashing Contest to showcase its new dishwasher

1940s



Westinghouse supports the war effort on many fronts, including the creation of the famous "We Can Do It" poster

1941



Westinghouse begins producing power at Grand Coulee Dam

1946



The first electric clothes dryer is introduced

1950s



Westinghouse markets its appliance line with the Freedom Fair advertising campaign

The Modern Era

1960



Paul Rand designs the Westinghouse logo

1954



Westinghouse launches its first color television

1954



The USS Nautilus, the world's first nuclear submarine, was launched with a reactor built by Westinghouse

1955



Westinghouse refrigerators account for 55% of the refrigerator market in the U.S.

Our Promise

For more than a century, Westinghouse has consistently provided innovative, reliable, high-quality products and customer service. It's a combination of groundbreaking technology and rock-solid dependability that's made us one of the world's most trusted brands.

From outdoor portable generators that provide power for your home, work and play moments, to high-definition TVs that are setting new standards for performance, we're constantly developing advanced products, rigorously testing them to make sure they work time after time, day after day.

When you see the W, you know you're getting a product packed with features that make your life easier, while still being easy to use. A product that has all the latest thinking, while providing years of value.

Innovation You Can Be Sure Of.

From a company that always puts you first.

Aluminum

| | |
|---|----|
| Black Marble Cookware | 6 |
| Mock Wood Grain Finish Marble Cookware | 11 |
| Grey Marble Cookware | 14 |
| Grey Granite Cookware | 16 |
| Matte Black Copper Cookware | 18 |

Cast Iron

| | |
|-----------------------------|----|
| Seasoned Cast Iron Cookware | 20 |
|-----------------------------|----|

Stainless Steel

| | |
|-----------------------------|----|
| Kitchen Tools Black Series | 24 |
| Kitchen Gadget Black Series | 28 |
| Food Tongs & Colander | 29 |
| Measuring Cups | 30 |
| Flour Sifter | |
| Strainer | |
| Graters | 31 |

Nylon

| | |
|--------------------------------|----|
| Kitchen Tools Colorful Series | 32 |
| Kitchen Gadget Colorful Series | 39 |

Stainless Steel

| | |
|-----------------------|----|
| Salt and Pepper Mills | 41 |
|-----------------------|----|

Knives & Knife Accessories

| | |
|------------------------|----|
| Knife Block Sets | 44 |
| Stainless Steel Knives | |
| Ceramic Knives | |

Kitchen Shears & Scissors

| | |
|-------------------------|----|
| Scissor Sets | 49 |
| Poultry Shears | |
| Kitchen Shears | |
| Herb Scissors | |
| Multiuse Kitchen Shears | |

Flatware

| | |
|-------------------------------|----|
| Stainless Steel Flatware Sets | 51 |
|-------------------------------|----|



BLACK MARBLE COOKWARE

Aluminum cookware with
3 layer non-stick marble
coating and black handles



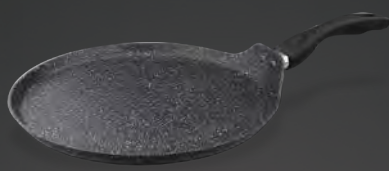
Forged aluminum cookware with
induction compatible bottom

Product features:

- Made of forged aluminum
- Fast and even heat distribution
- Induction compatible bottom

**FRY PAN**

WCFP0009020MBB - 8"
 WCFP0009024MBB - 9.5"
 WCFP0009026MBB - 10"
 WCFP0009028MBB - 11"
 WCFP0009030MBB - 11.8"

**CREPE PAN**

WCFP0009C28MBB - 11"
 WCFP0009C32MBB - 12.5"

**WOK WITH LID**

WCCW0009024MBB - 9.5"
 WCCW0009028MBB - 11"
 WCCW0009032MBB - 12.5"

**SAUCEPAN WITH GLASS LID**

WCSP0009016MBB - 1.3 qt.
 WCSP0009018MBB - 1.8 qt.
 WCSP0009020MBB - 2.6 qt.

**CASSEROLE WITH GLASS LID**

WCCC0009024MBB - 4.5 qt.
 WCCC0009028MBB - 7.5 qt.

**LOW CASSEROLE WITH GLASS LID**

WCCC0009L28MBB - 3.9 qt.
 WCCC0009L32MBB - 5.5 qt.

| | Model no. | Color box size (L" x W" x H") | Qty per carton | Carton dimensions (L" x W" x H") | CBM | Cuft | Qty per 40' HQ |
|-------------------------------------|----------------|----------------------------------|-------------------|-------------------------------------|-------|--------|-------------------|
| FRY PAN | WCFP0009020MBB | 14.29 x 8.5 x 2.51 | 8 | 17.72 x 14.76 x 10.63 | 0.046 | 1.6093 | 11584 |
| | WCFP0009024MBB | 16.77 x 10.11 x 2.76 | 8 | 20.87 x 17.32 x 11.61 | 0.069 | 2.4298 | 7672 |
| | WCFP0009026MBB | 17.4 x 10.83 x 2.87 | 8 | 22.44 x 17.72 x 12.01 | 0.078 | 2.7632 | 6744 |
| | WCFP0009028MBB | 18.07 x 11.61 x 2.8 | 8 | 24.02 x 18.5 x 11.81 | 0.086 | 3.0379 | 6136 |
| | WCFP0009030MBB | 18.74 x 12.44 x 2.87 | 8 | 25.59 x 19.09 x 12.6 | 0.101 | 3.5631 | 5232 |
| CREPE PAN | WCFP0009C28MBB | 18.35 x 11.5 x 2.36 | 6 | 23.62 x 18.9 x 7.68 | 0.058 | 1.9836 | 7050 |
| | WCFP0009C32MBB | 19.45 x 13.07 x 2.52 | 6 | 26.77 x 20.08 x 8.07 | 0.072 | 2.5110 | 5568 |
| WOK WITH LID | WCCW0009024MBB | 16.54 x 10.24 x 3.35 | 4 | 21.06 x 17.13 x 6.89 | 0.041 | 1.4385 | 6480 |
| | WCCW0009028MBB | 18.11 x 11.81 x 3.15 | 4 | 24.09 x 18.7 x 7.28 | 0.054 | 1.8995 | 4908 |
| | WCCW0009032MBB | 19.49 x 13.39 x 4.13 | 4 | 27.56 x 20.08 x 8.86 | 0.08 | 2.8371 | 3284 |
| SAUCEPAN WITH GLASS LID | WCSP0009016MBB | 12.91 x 7.17 x 3.74 | 4 | 15.16 x 13.39 x 8.07 | 0.027 | 0.9478 | 9836 |
| | WCSP0009018MBB | 13.7 x 7.87 x 4.13 | 4 | 16.54 x 14.17 x 8.86 | 0.034 | 1.2016 | 7760 |
| | WCSP0009020MBB | 14.3 x 8.74 x 4.76 | 4 | 18.11 x 14.76 x 10.24 | 0.045 | 1.5841 | 5884 |
| CASSEROLE WITH GLASS LID | WCCC0009024MBB | 13.54 x 10.39 x 5.51 | 4 | 21.46 x 13.98 x 11.61 | 0.057 | 2.0159 | 4624 |
| | WCCC0009028MBB | 14.49 x 11.85 x 6.3 | 4 | 24.41 x 14.96 x 13.19 | 0.079 | 2.7877 | 3344 |
| LOW CASSEROLE WITH GLASS LID | WCCC0009L28MBB | 14.61 x 11.93 x 3.74 | 4 | 24.41 x 15.16 x 8.07 | 0.049 | 1.7283 | 5392 |
| | WCCC0009L32MBB | 14.76 x 13.58 x 3.94 | 4 | 27.76 x 15.16 x 8.46 | 0.058 | 2.0611 | 4520 |

5 PIECE FORGED ALUMINUM COOKWARE SET

WCCS000905AMBB

1.3 qt. saucepan with lid

4.5 qt. casserole with lid

9.5" fry pan



6 PIECE FORGED ALUMINUM COOKWARE SET

WCCS000906AMBB

2.6 qt. saucepan with lid

7.5 qt. casserole with lid

9.5" fry pan

11.8" fry pan



8 PIECE FORGED ALUMINUM COOKWARE SET

WCCS000908AMBB

2.6 qt. saucepan with lid

4.5 qt. casserole with lid

7.5 qt. casserole with lid

9.5" fry pan

11.8" fry pan



| Model no. | Color box size (L" x W" x H") | Qty per carton | Carton dimensions (L" x W" x H") | CBM | Cuft | Qty per 40' HQ |
|----------------|----------------------------------|-------------------|-------------------------------------|-------|--------|-------------------|
| WCCS000905AMBB | 18.5 x 10.2 x 9.13 | 2 | 19.29 x 11.02 x 19.09 | 0.067 | 2.3503 | 1982 |
| WCCS000906AMBB | 24.96 x 13.54 x 6.77 | 2 | 25.79 x 14.37 x 14.37 | 0.087 | 3.0821 | 1512 |
| WCCS000908AMBB | 23.39 x 13.54 x 9.8 | 2 | 24.21 x 14.37 x 20.47 | 0.117 | 4.1228 | 1130 |

4 PIECE DEEP SQUARE PAN SET

WCCS0009D24MBB - 4.48 qt. deep square pan with glass lid, stainless steel frying basket, stainless steel steam rack



| Model no. | Color box size (L" x W" x H") | Qty per carton | Carton dimensions (L" x W" x H") | CBM | Cuft | Qty per 40' HQ |
|----------------|-------------------------------|----------------|----------------------------------|-------|--------|----------------|
| WCCS0009D24MBB | 22.44 x 10.04 x 5.12 | 4 | 23.03 x 20.87 x 10.83 | 0.085 | 3.0115 | 3096 |

Pressed aluminum cookware with induction compatible bottom

Product features:

Made of pressed aluminum
Fast and even heat distribution
Induction compitable bottom



Interlocking mechanism locks two pans together, Ideal for cooking and turning tortillas

2 PIECE TORTILLA FRY PAN SET

WCFP0009T24MBB - 9.5" interlocking double pan set

WCFP0009T28MBB - 11" interlocking double pan set

| Model no. | Color box size (L" x W" x H") | Qty per carton | Carton dimensions (L" x W" x H") | CBM | Cuft | Qty per 40' HQ |
|----------------|-------------------------------|----------------|----------------------------------|-------|--------|----------------|
| WCFP0009T24MBB | 15.16 x 9.84 x 3.35 | 6 | 20.47 x 15.75 x 10.63 | 0.056 | 1.9836 | 7050 |
| WCFP0009T28MBB | 17.72 x 11.42 x 3.54 | 6 | 23.62 x 18.31 x 11.22 | 0.08 | 2.8085 | 4980 |

Pressed aluminum cookware with riveted handle and steel plate bottom

Product features:

Made of pressed aluminum

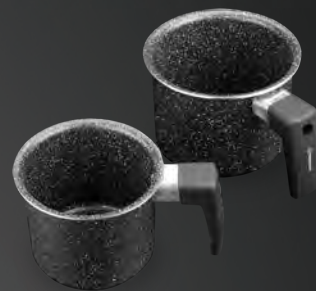
Riveted handle

Steel plate bottom



3 PIECE MINI FRY PAN SET

WCCS000903BMBB - 4.75", 5.5", 6.25"



2 PIECE MILK POT SET

WCCS000902AMBB - 1.05 qt., 1.37 qt.

| Model no. | Color box size (L" x W" x H") | Qty per carton | Carton dimensions (L" x W" x H") | CBM | Cuft | Qty per 40' HQ |
|----------------|----------------------------------|-------------------|-------------------------------------|-------|--------|-------------------|
| WCCS000903BMBB | 10.83 x 6.5 x 2.95 | 12 | 22.24 x 13.58 x 9.45 | 0.047 | 1.6523 | 16920 |
| WCCS000902AMBB | 8.27 x 6.3 x 5.31 | 12 | 17.13 x 13.19 x 16.54 | 0.061 | 2.1617 | 12936 |

Pressed aluminum roasters

Product features:

Made of pressed aluminum

ALUMINUM ROASTER

WCBA0009001MBB - 9.8" x 7.8"

WCBA0009002MBB - 11.8" x 8.7"

WCBA0009003MBB - 13.8" x 9.8"



| Model no. | Color box size (L" x W" x H") | Qty per carton | Carton dimensions (L" x W" x H") | CBM | Cuft | Qty per 40' HQ |
|----------------|----------------------------------|-------------------|-------------------------------------|-------|--------|-------------------|
| WCBA0009001MBB | 11.61 x 8.9 x 2.13 | 8 | 18.5 x 12.2 x 9.25 | 0.034 | 1.2093 | 15416 |
| WCBA0009002MBB | 14.01 x 9.69 x 2.72 | 8 | 20.08 x 14.57 x 11.61 | 0.056 | 1.9661 | 9480 |
| WCBA0009003MBB | 16.02 x 10.87 x 2.95 | 8 | 22.44 x 16.54 x 12.6 | 0.077 | 2.7058 | 6888 |

MOCK WOOD GRAIN FINISH MARBLE COOKWARE

Aluminum cookware with
4 layer non-stick marble
coating and wood grain
finish handles



Silicone rim with
steam vent



Forged aluminum cookware with grey exterior
and induction compatible bottom

Product features:

Made of forged aluminum

Marble non-stick interior and grey exterior

Glass lid with silicone rim and steam vent

Induction bottom is compatible with direct heat, electric hotplates and induction



FRY PAN

WCFP0032020MBB - 8"
WCFP0032024MBB - 9.5"
WCFP0032026MBB - 10"
WCFP0032028MBB - 11"
WCFP0032030MBB - 11.8"



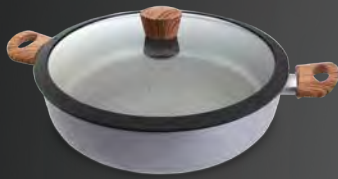
CREPE PAN

WCFP0032C28MBB - 11"
WCFP0032C32MBB - 12.5"



SAUCEPAN WITH GLASS LID

WCSP0032016MBB - 1.3 qt.
WCSP0032018MBB - 1.8 qt.
WCSP0032020MBB - 2.6 qt.



LOW CASSEROLE WITH GLASS LID

WCCC0032L28MBB - 3.9 qt.
WCCC0032L32MBB - 5.5 qt.



CASSEROLE WITH GLASS LID

WCCC0032024MBB - 4.5 qt.
WCCC0032028MBB - 7.5 qt.

| | Model no. | Color box size (L" x W" x H") | Qty per carton | Carton dimensions (L" x W" x H") | CBM | Cuft | Qty per 40' HQ |
|------------------------------|----------------|----------------------------------|-------------------|-------------------------------------|-------|--------|-------------------|
| FRY PAN | WCFP0032020MBB | 13.94 x 8.43 x 2.56 | 8 | 17.5 x 14.57 x 10.83 | 0.045 | 1.5992 | 11656 |
| | WCFP0032024MBB | 16.3 x 9.84 x 3.07 | 8 | 20.28 x 16.93 x 12.99 | 0.073 | 2.5811 | 7224 |
| | WCFP0032026MBB | 17.09 x 10.75 x 3.5 | 8 | 22.05 x 17.72 x 14.57 | 0.093 | 3.2932 | 5656 |
| | WCFP0032028MBB | 17.72 x 11.54 x 3.23 | 8 | 23.62 x 18.31 x 13.58 | 0.096 | 3.3997 | 5480 |
| | WCFP0032030MBB | 18.46 x 12.24 x 3.54 | 8 | 25 x 19.09 x 14.76 | 0.115 | 4.0791 | 4568 |
| CREPE PAN | WCFP0032C28MBB | 17.87 x 11.34 x 2.56 | 6 | 23.23 x 18.5 x 8.27 | 0.058 | 2.0568 | 6798 |
| | WCFP0032C32MBB | 19.49 x 13.39 x 4.13 | 6 | 26.57 x 20.08 x 8.27 | 0.072 | 2.5534 | 5472 |
| SAUCEPAN WITH GLASS LID | WCSP0032016MBB | 12.91 x 7.09 x 3.62 | 4 | 14.76 x 13.58 x 7.87 | 0.026 | 1.9836 | 7050 |
| | WCSP0032018MBB | 13.58 x 7.87 x 4.13 | 4 | 16.34 x 14.17 x 8.86 | 0.034 | 2.8085 | 4980 |
| | WCSP0032020MBB | 14.17 x 8.58 x 4.72 | 4 | 17.72 x 14.76 x 10.04 | 0.043 | 1.5199 | 6132 |
| LOW CASSEROLE WITH GLASS LID | WCCC0032L28MBB | 14.76 x 11.81 x 3.74 | 4 | 24.21 x 15.35 x 8.07 | 0.049 | 1.7367 | 5368 |
| | WCCC0032L32MBB | 15.28 x 15.16 x 3.94 | 4 | 26.97 x 15.94 x 8.46 | 0.06 | 2.1067 | 4424 |
| CASSEROLE WITH GLASS LID | WCCC0032024MBB | 13.98 x 10.16 x 5.51 | 4 | 20.87 x 14.57 x 11.61 | 0.058 | 2.0432 | 4560 |
| | WCCC0032028MBB | 14.96 x 11.81 x 6.38 | 4 | 24.21 x 15.55 x 13.39 | 0.083 | 2.9172 | 3196 |

Forged Aluminum Cookware Set

Product features:

Forged aluminum

2 layers black non-stick coating + white & black dots
(marble finish)

Soft touch with wooden pattern

Metal guard in grey color

3 PIECE FORGED ALUMINUM PAN SET

WCCS003203AMBB

8" fry pan, 10" fry pan, 11" crepe pan



| Model no. | Color box size (L" x W" x H") | Qty per carton | Carton dimensions (L" x W" x H") | CBM | Cuft | Qty per 40' HQ |
|----------------|----------------------------------|-------------------|-------------------------------------|-------|---------|-------------------|
| WCCS003203AMBB | 18.11 x 11.3 x 4.72 | 64/pallet | 47.24 x 39.37 x 50.79 | 1.548 | 54.6754 | 40 pallets |

GREY MARBLE COOKWARE

Aluminum cookware with 4 layer, non-stick marble coating and sand blasted finish



Forged aluminum cookware with induction compatible bottom

Product features:

Made of forged aluminum
Fast and even heat distribution
Induction compatible bottom

**FRY PAN**

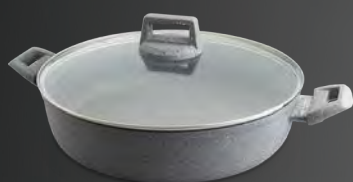
WCFP0062020MGY - 8"
 WCFP0062024MGY - 9.5"
 WCFP0062026MGY - 10"
 WCFP0062028MGY - 11"
 WCFP0062030MGY - 11.8"

**CREPE PAN**

WCFP0062C28MGY - 11"
 WCFP0062C32MGY - 12.5"

**SAUCEPAN WITH GLASS LID**

WCSP0062016MGY - 1.3 qt.
 WCSP0062018MGY - 1.8 qt.
 WCSP0062020MGY - 2.6 qt.

**LOW CASSEROLE WITH GLASS LID**

WCCC0062L28MGY - 3.9 qt.
 WCCC0062L32MGY - 5.5 qt.

**CASSEROLE WITH GLASS LID**

WCCC0062024MGY - 4.5 qt.
 WCCC0062028MGY - 7.5 qt.

| | Model no. | Color box size (L" x W" x H") | Qty per carton | Carton dimensions (L" x W" x H") | CBM | Cuft | Qty per 40' HQ |
|---|----------------|----------------------------------|-------------------|-------------------------------------|-------|--------|-------------------|
| FRY PAN | WCFP0062020MGY | 14.76 x 8.46 x 2.56 | 8 | 17.72 x 15.35 x 10.83 | 0.048 | 1.7046 | 10936 |
| | WCFP0062024MGY | 17.13 x 10.24 x 2.44 | 8 | 21.26 x 17.72 x 10.43 | 0.064 | 2.2744 | 8192 |
| | WCFP0062026MGY | 17.52 x 10.75 x 3.35 | 8 | 22.24 x 18.11 x 13.98 | 0.092 | 3.2588 | 5720 |
| | WCFP0062028MGY | 18.31 x 11.61 x 3.35 | 8 | 24.02 x 18.9 x 13.98 | 0.104 | 3.6713 | 5072 |
| | WCFP0062030MGY | 18.9 x 12.28 x 3.35 | 8 | 25.39 x 19.49 x 13.98 | 0.113 | 4.0033 | 4656 |
| CREPE PAN | WCFP0062C28MGY | 19.01 x 11.54 x 2.17 | 6 | 23.82 x 19.69 x 7.09 | 0.055 | 1.9232 | 7272 |
| | WCFP0062C32MGY | 19.88 x 12.99 x 2.36 | 6 | 26.77 x 20.47 x 7.68 | 0.069 | 2.4354 | 5742 |
| SAUCEPAN WITH GLASS LID | WCSP0062016MGY | 13.58 x 7.09 x 4.09 | 4 | 14.96 x 14.17 x 8.86 | 0.031 | 1.0871 | 8576 |
| | WCSP0062018MGY | 14.06 x 8.07 x 4.33 | 4 | 16.93 x 14.57 x 9.25 | 0.037 | 1.3206 | 7060 |
| | WCSP0062020MGY | 14.76 x 8.74 x 5.04 | 4 | 18.31 x 15.35 x 10.63 | 0.049 | 1.7294 | 5388 |
| LOW CASSEROLE WITH GLASS LID | WCCC0062L28MGY | 14.17 x 11.93 x 3.9 | 4 | 24.61 x 14.76 x 8.46 | 0.050 | 1.7798 | 5236 |
| | WCCC0062L32MGY | 14.81 x 13.46 x 3.94 | 4 | 27.76 x 15.35 x 8.46 | 0.059 | 2.0879 | 4464 |
| CASSEROLE WITH GLASS LID | WCCC0062024MGY | 13.39 x 10.24 x 5.98 | 4 | 21.26 x 13.98 x 12.6 | 0.061 | 2.1667 | 4300 |
| | WCCC0062028MGY | 14.37 x 11.81 x 6.46 | 4 | 24.41 x 14.96 x 13.58 | 0.081 | 2.8709 | 3244 |

GREY GRANITE COOKWARE

Aluminum cookware with 3 layer non-stick grey granite coating and soft touch in grey handles



Forged aluminum cookware with grey granite and induction compatible bottom

Product features:

Made of forged aluminum
Fast and even heat distribution
Induction compatible bottom

**FRY PAN**

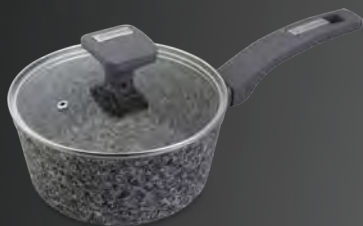
WCFP0070020GGY - 8"
 WCFP0070024GGY - 9.5"
 WCFP0070026GGY - 10"
 WCFP0070028GGY - 11"
 WCFP0070030GGY - 11.8"

**CREPE PAN**

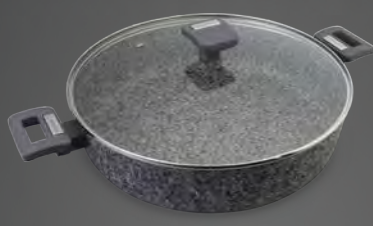
WCFP0070C28GGY - 11"
 WCFP0070C32GGY - 12.5"

**WOK WITH LID**

WCCW0070024GGY - 9.5"
 WCCW0070028GGY - 11"
 WCCW0070032GGY - 12.5"

**SAUCEPAN WITH GLASS LID**

WCSP0070016GGY - 1.3 qt.
 WCSP0070018GGY - 1.8 qt.
 WCSP0070020GGY - 2.6 qt.

**LOW CASSEROLE WITH GLASS LID**

WCCC0070L28GGY - 3.9 qt.
 WCCC0070L32GGY - 5.5 qt.

**CASSEROLE WITH GLASS LID**

WCCC0070024GGY - 4.5 qt.
 WCCC0070028GGY - 7.5 qt.

| | Model no. | Color box size (L" x W" x H") | Qty per carton | Carton dimensions (L" x W" x H") | CBM | Cuft | Qty per 40' HQ |
|-------------------------------------|----------------|----------------------------------|-------------------|-------------------------------------|-------|--------|-------------------|
| FRY PAN | WCFP0070020GGY | 14.57 x 8.5 x 2.52 | 8 | 17.72 x 15.16 x 10.63 | 0.047 | 1.6522 | 11280 |
| | WCFP0070024GGY | 17.01 x 10.12 x 2.76 | 8 | 20.87 x 17.52 x 11.61 | 0.07 | 2.4574 | 7584 |
| | WCFP0070026GGY | 17.64 x 10.83 x 2.87 | 8 | 22.44 x 18.11 x 12.01 | 0.08 | 2.8246 | 6600 |
| | WCFP0070028GGY | 18.31 x 11.61 x 2.8 | 8 | 24.02 x 18.7 x 11.81 | 0.087 | 3.0702 | 6072 |
| | WCFP0070030GGY | 18.98 x 12.44 x 2.87 | 8 | 25.59 x 19.29 x 12.6 | 0.102 | 3.5998 | 5176 |
| CREPE PAN | WCFP0070C28GGY | 18.35 x 11.5 x 2.36 | 6 | 23.62 x 18.9 x 7.68 | 0.056 | 1.9836 | 7050 |
| | WCFP0070C32GGY | 19.45 x 13.07 x 2.52 | 6 | 26.77 x 20.08 x 8.07 | 0.071 | 2.5110 | 5568 |
| WOK WITH LID | WCCW0070024GGY | 16.77 x 10.24 x 3.15 | 4 | 21.06 x 17.32 x 6.89 | 0.041 | 1.4550 | 6408 |
| | WCCW0070028GGY | 18.35 x 11.81 x 3.35 | 4 | 24.09 x 18.9 x 7.28 | 0.054 | 1.9195 | 4856 |
| | WCCW0070032GGY | 19.72 x 13.39 x 4.13 | 4 | 27.56 x 20.28 x 8.86 | 0.081 | 2.8649 | 3252 |
| SAUCEPAN WITH GLASS LID | WCSP0070016GGY | 13.15 x 7.17 x 3.74 | 4 | 15.16 x 13.58 x 8.07 | 0.027 | 0.9617 | 9692 |
| | WCSP0070018GGY | 13.94 x 7.87 x 4.13 | 4 | 16.54 x 14.37 x 8.86 | 0.035 | 1.2183 | 7652 |
| | WCSP0070020GGY | 14.57 x 8.74 x 4.76 | 4 | 18.11 x 14.76 x 10.24 | 0.045 | 1.5841 | 5884 |
| CASSEROLE WITH GLASS LID | WCCC0070024GGY | 13.54 x 10.39 x 5.51 | 4 | 21.46 x 13.98 x 11.61 | 0.057 | 2.0159 | 4624 |
| | WCCC0070028GGY | 14.49 x 11.85 x 6.3 | 4 | 24.41 x 14.96 x 13.19 | 0.079 | 2.7877 | 3344 |
| LOW CASSEROLE WITH GLASS LID | WCCC0070L28GGY | 14.61 x 11.93 x 3.74 | 4 | 24.41 x 15.16 x 8.07 | 0.049 | 1.7283 | 5392 |
| | WCCC0070L32GGY | 14.76 x 13.58 x 3.94 | 4 | 27.76 x 15.16 x 8.46 | 0.058 | 2.0611 | 4520 |



MATTE BLACK COPPER COOKWARE

Aluminum cookware
with 2 layer non-stick
copper color coating,
with riveted stainless
steel handle and knob

Forged aluminum cookware with
induction compatible bottom

Product features:

Made of forged aluminum
Fast and even heat distribution
Induction compatible bottom



**FRY PAN**

WCFP0042020CU - 8"
 WCFP0042024CU - 9.5"
 WCFP0042026CU - 10"
 WCFP0042028CU - 11"
 WCFP0042030CU - 11.8"

**CREPE PAN**

WCFP0042C28CU - 11"
 WCFP0042C32CU - 12.5"

**ALUMINUM ROASTER**

WCBA0042001CU - 9.8" x 7.8"
 WCBA0042002CU - 11.8" x 8.7"
 WCBA0042003CU - 13.8" x 9.8"

**SAUCEPAN WITH GLASS LID**

WCSP0042016CU - 1.3 qt.
 WCSP0042018CU - 1.8 qt.
 WCSP0042020CU - 2.6 qt.

**LOW CASSEROLE WITH GLASS LID**

WCCC0042L28CU - 3.9 qt.
 WCCC0042L32CU - 5.5 qt.

**CASSEROLE WITH GLASS LID**

WCCC0042024CU - 4.5 qt.
 WCCC0042028CU - 7.5 qt.

| | Model no. | Color box size (L" x W" x H") | Qty per carton | Carton dimensions (L" x W" x H") | CBM | Cuft | Qty per 40' HQ |
|-------------------------------------|---------------|----------------------------------|-------------------|-------------------------------------|-------|--------|-------------------|
| FRY PAN | WCFP0042020CU | 14.88 x 8.5 x 3.15 | 8 | 17.72 x 15.35 x 13.19 | 0.059 | 2.0766 | 8976 |
| | WCFP0042024CU | 17.32 x 10.12 x 3.35 | 8 | 20.87 x 17.91 x 14.17 | 0.087 | 3.0663 | 6080 |
| | WCFP0042026CU | 17.99 x 10.83 x 3.46 | 8 | 22.44 x 18.31 x 14.57 | 0.098 | 3.4638 | 5376 |
| | WCFP0042028CU | 18.7 x 11.61 x 3.39 | 8 | 24.02 x 19.09 x 14.37 | 0.108 | 3.8140 | 4888 |
| | WCFP0042030CU | 19.88 x 12.44 x 3.46 | 8 | 25.59 x 20.28 x 14.57 | 0.124 | 4.3746 | 4256 |
| CREPE PAN | WCFP0042C28CU | 18.9 x 11.5 x 2.95 | 6 | 23.62 x 19.49 x 9.65 | 0.073 | 2.5701 | 5442 |
| | WCFP0042C32CU | 20.67 x 13.07 x 3.11 | 6 | 26.77 x 21.26 x 9.84 | 0.092 | 3.2424 | 4308 |
| ALUMINUM ROASTER | WCBA0042001CU | 11.61 x 8.9 x 2.13 | 8 | 22.44 x 16.54 x 12.6 | 0.077 | 2.7058 | 6888 |
| | WCBA0042002CU | 14.02 x 9.69 x 2.71 | 8 | 20.08 x 14.57 x 11.61 | 0.056 | 1.9661 | 9480 |
| | WCBA0042003CU | 16.02 x 10.87 x 2.95 | 8 | 22.44 x 16.54 x 12.6 | 0.077 | 2.7058 | 6888 |
| SAUCEPAN WITH GLASS LID | WCSP0042016CU | 13.5 x 7.17 x 4.29 | 4 | 15.16 x 13.98 x 9.45 | 0.033 | 1.1586 | 8048 |
| | WCSP0042018CU | 14.29 x 7.91 x 4.72 | 4 | 16.54 x 14.76 x 10.24 | 0.041 | 1.4464 | 6444 |
| | WCSP0042020CU | 14.96 x 8.74 x 5.35 | 4 | 18.11 x 15.35 x 11.42 | 0.052 | 1.8376 | 5072 |
| CASSEROLE WITH GLASS LID | WCCC0042024CU | 13.54 x 10.39 x 5.71 | 4 | 21.46 x 13.98 x 12.2 | 0.06 | 2.1184 | 4400 |
| | WCCC0042028CU | 14.49 x 11.85 x 6.5 | 4 | 24.41 x 14.96 x 13.78 | 0.082 | 2.9125 | 3200 |
| LOW CASSEROLE WITH GLASS LID | WCCC0042L28CU | 14.61 x 11.93 x 3.86 | 4 | 24.41 x 15.16 x 8.46 | 0.051 | 1.8126 | 5144 |
| | WCCC0042L32CU | 14.76 x 13.58 x 3.94 | 4 | 27.76 x 15.16 x 8.07 | 0.056 | 1.9653 | 4744 |

SEASONED CAST IRON COOKWARE

Cast iron cookware with
2 layer pre-seasoned
coating



Seasoned cast iron cookware
with durable construction

Product features:

Made of cast iron
Heats evenly and steadily
Pre-seasoned to protect against rust
and provide natural, non-stick surface





SKILLET

WCCI0001BK - 6.5"



SKILLET

WCCI0002BK - 8"



SKILLET

WCCI0003BK - 10.25"



SKILLET

WCCI0004BK - 12"



SAUTE SKILLET

WCCI0005BK - 10"



SKILLET

WCCI0006BK - 15"



SQUARE GRILL PAN
WCCI0007BK - 10.5"



ROUND GRIDDLE
WCCI0008BK - 10.5"



GRIDDLE
WCCI0009BK - 20" x 10"



5 QUART DUTCH OVEN
WCCI0010BK - 10.25"



**5 QUART DUTCH OVEN
WITH SKILLET LID**
WCCI0011BK - 10.25"



**3 QUART DUTCH OVEN
WITH SKILLET LID**
WCCI0012BK - 10.25"

| Model no. | Product size (L" x W" x H") | Qty per carton | Carton dimensions (L" x W" x H") | CBM | Cuft | Qty per 40' HQ |
|------------|--------------------------------|-------------------|-------------------------------------|-------|--------|-------------------|
| WCCI0001BK | 10.16 x 6.93 x 1.38 | 12 | 20.87 x 10.63 x 5.91 | 0.021 | 0.7581 | 36888 |
| WCCI0002BK | 12.64 x 8.74 x 1.89 | 10 | 22.44 x 12.99 x 9.45 | 0.045 | 1.5945 | 14610 |
| WCCI0003BK | 16.22 x 10.75 x 1.97 | 6 | 15.75 x 14.57 x 11.42 | 0.043 | 1.5159 | 9222 |
| WCCI0004BK | 18.03 x 12.72 x 2.17 | 4 | 16.93 x 10.63 x 12.99 | 0.038 | 1.3532 | 6888 |
| WCCI0005BK | 16.69 x 10.63 x 2.28 | 8 | 19.69 x 16.54 x 11.42 | 0.061 | 2.1510 | 8664 |
| WCCI0006BK | 22.2 x 14.96 x 2.95 | 2 | 20.47 x 16.54 x 7.09 | 0.039 | 1.3885 | 3356 |
| WCCI0007BK | 17.13 x 10.55 x 2.48 | 4 | 18.5 x 11.81 x 12.2 | 0.044 | 1.5438 | 6036 |
| WCCI0008BK | 15.94 x 10.63 x 1.57 | 6 | 16.14 x 11.81 x 10.63 | 0.033 | 1.1730 | 11922 |
| WCCI0009BK | 21.26 x 10.43 x 0.87 | 3 | 21.93 x 11.73 x 3.94 | 0.017 | 0.5863 | 11928 |
| WCCI0010BK | 12.72 x 10.31 x 7.01 | 2 | 11.73 x 11.73 x 12.24 | 0.028 | 0.9755 | 4778 |
| WCCI0011BK | 12.72 x 10.31 x 7.01 | 2 | 11.73 x 11.73 x 12.24 | 0.028 | 0.9755 | 4778 |
| WCCI0012BK | 16.54 x 10.63 x 4.61 | 2 | 16.14 x 12.28 x 9.17 | 0.030 | 1.0527 | 4428 |



BLACK COLLECTION

Kitchen tools and gadgets
with soft grip, non-slip
ergonomic handles

Black series collection with
soft grip handles

Product features:

Soft grip, non slip ergonomic handle





Stainless Steel Kitchen tools

Product features:

Stainless steel head
PP + ABS + TPR handle

SKIMMER

WCKT0081001



SOUP LADLE

WCKT0081002



COOKING SPOON

WCKT0081003



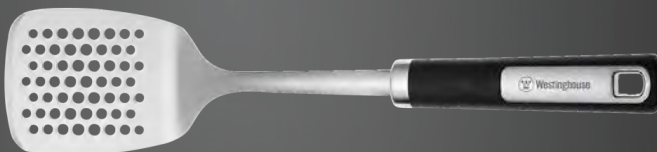
SLOTTED SPOON

WCKT0081004



SLOTTED TURNER

WCKT0081005



COOKING TURNER

WCKT0081006



SPAGHETTI SERVER

WCKT0081007



POTATO MASHER

WCKT0081008



Nylon kitchen tools

Product features:

Nylon head is heat-resistant
up to 210 °C (410 °F)

PP + ABS + TPR handle

SOUP LADLE

WCKT0081009



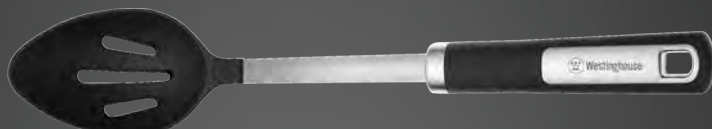
COOKING SPOON

WCKT0081010



SLOTTED SPOON

WCKT0081011



COOKING TURNER

WCKT0081012



SLOTTED TURNER

WCKT0081013



SPAGHETTI SERVER

WCKT0081014



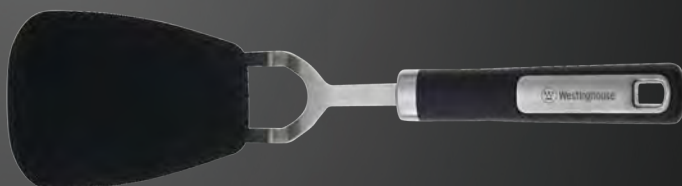
COLANDER SCOOP

WCKT0081015



FLEXIBLE TURNER

WCKT0081016



SKIMMER

WCKT0081019



Stainless Steel Kitchen tools

| Model no. | Product size (inch/cm) | Packaging | Qty per carton | Carton dimensions (L" x W" x H") | CBM | Cuft | Qty per 40' HQ | Carton GW (kg) | Carton NW (kg) |
|-------------|------------------------|-------------|----------------|----------------------------------|-------|--------|----------------|----------------|----------------|
| WCKT0081001 | 14.96"/38 | Tie on card | 48 | 17.52 x 11.61 x 17.52 | 0.058 | 2.0633 | 54192 | 8.4 | 6.6 |
| WCKT0081002 | 12.6"/32 | Tie on card | 36 | 18.11 x 11.81 x 9.45 | 0.033 | 1.1698 | 71712 | 6.95 | 5.72 |
| WCKT0081003 | 13.4"/34 | Tie on card | 48 | 15.75 x 13.78 x 8.86 | 0.032 | 1.1126 | 100560 | 8 | 6.5 |
| WCKT0081004 | 13.4"/34 | Tie on card | 48 | 15.94 x 13.78 x 8.86 | 0.032 | 1.1265 | 99312 | 7.7 | 6.2 |
| WCKT0081005 | 13.8"/35 | Tie on card | 48 | 16.54 x 15.75 x 9.25 | 0.039 | 1.3944 | 80208 | 8.8 | 7.2 |
| WCKT0081006 | 13.8"/35 | Tie on card | 48 | 16.54 x 14.96 x 11.02 | 0.045 | 1.5784 | 70848 | 9.5 | 7.9 |
| WCKT0081007 | 12.8"/32.5 | Tie on card | 48 | 16.93 x 15.55 x 9.65 | 0.042 | 1.4698 | 76128 | 8 | 6.4 |
| WCKT0081008 | 10.63"/27 | Tie on card | 48 | 15.75 x 13.19 x 12.6 | 0.043 | 1.5145 | 73872 | 9.28 | 7.78 |

Nylon kitchen tools

| Model no. | Product size (inch/cm) | Packaging | Qty per carton | Carton dimensions (L" x W" x H") | CBM | Cuft | Qty per 40' HQ | Carton GW (kg) | Carton NW (kg) |
|-------------|------------------------|-------------|----------------|----------------------------------|-------|--------|----------------|----------------|----------------|
| WCKT0081009 | 12.6"/32 | Tie on card | 48 | 18.9 x 16.93 x 11.02 | 0.058 | 2.0412 | 54816 | 7 | 5.2 |
| WCKT0081010 | 14.2"/36 | Tie on card | 48 | 16.54 x 13.78 x 8.86 | 0.033 | 1.1682 | 95760 | 6.4 | 5 |
| WCKT0081011 | 10"/25.5 | Tie on card | 48 | 16.73 x 13.78 x 8.86 | 0.033 | 1.1821 | 94608 | 6.2 | 4.8 |
| WCKT0081012 | 14.2"/36 | Tie on card | 48 | 16.93 x 15.75 x 9.65 | 0.042 | 1.4884 | 75168 | 6.75 | 5.2 |
| WCKT0081013 | 14.2"/36 | Tie on card | 48 | 23.62 x 18.9 x 7.68 | 0.056 | 1.9836 | 56400 | 6.7 | 5.1 |
| WCKT0081014 | 14.2"/36 | Tie on card | 48 | 17.32 x 13.58 x 11.22 | 0.043 | 1.528 | 73200 | 6.6 | 5.04 |
| WCKT0081015 | 13.4"/34 | Tie on card | 12 | 15.75 x 9.84 x 16.93 | 0.043 | 1.5188 | 18408 | 2.7 | 1.28 |
| WCKT0081016 | 11.2"/28.5 | Tie on card | 48 | 16.73 x 15.16 x 13.58 | 0.056 | 1.9938 | 56112 | 6.8 | 5.14 |
| WCKT0081019 | 11.2"/28.5 | Tie on card | 48 | 22.05 x 17.91 x 9.25 | 0.06 | 2.1149 | 52896 | 7.2 | 5.3 |

Kitchen gadgets with metal function parts

Product features:

Stainless steel / metal function parts
PP + ABS + TPR handles



PIZZA CUTTER
WCKG0081004



CHEESE SLICER
WCKG0081003



CAN OPENER
WCKG0081002



GARLIC PRESS
WCKG0081001



PEELER
WCKG0081005



CHEESE GRATER
WCKG0081009



CAKE SERVER
WCKG0081008



EGG WHISK
WCKG0081007



ICE CREAM SCOOP
WCKG0081006



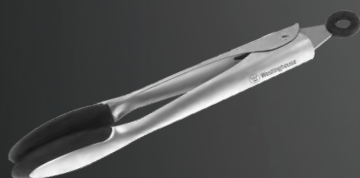
BOTTLE OPENER
WCKG0081010

| Model no. | Product size (inch/cm) | Packaging | Qty per carton | Carton dimensions (L" x W" x H") | CBM | Cuft | Qty per 40' HQ | Carton GW (kg) | Carton NW (kg) |
|-------------|------------------------|-------------|----------------|----------------------------------|-------|--------|----------------|----------------|----------------|
| WCKG0081001 | 7.7"/19.5 | Tie on card | 32 | 16.54 x 11.02 x 10.63 | 0.032 | 1.1215 | 66496 | 9.1 | 7.9 |
| WCKG0081002 | 8.9"/22.5 | Tie on card | 32 | 20.87 x 12.2 x 12.4 | 0.052 | 1.8280 | 40800 | 9.9 | 8.6 |
| WCKG0081003 | 8.7"/22.2 | Tie on card | 72 | 15.75 x 11.02 x 16.14 | 0.046 | 1.6219 | 103464 | 8 | 6.5 |
| WCKG0081004 | 8.5"/21.5 | Tie on card | 72 | 19.29 x 12.2 x 12.2 | 0.047 | 1.6632 | 100872 | 8.9 | 6.7 |
| WCKG0081005 | 7.7"/19.5 | Tie on card | 72 | 13.78 x 11.02 x 14.96 | 0.037 | 1.3153 | 127584 | 5.6 | 3.9 |
| WCKG0081006 | 9"/23 | Tie on card | 72 | 13.78 x 12.2 x 19.69 | 0.054 | 1.9161 | 87552 | 9.7 | 7.5 |
| WCKG0081007 | 11.8"/30 | Tie on card | 48 | 14.37 x 14.37 x 15.16 | 0.051 | 1.8116 | 61728 | 5.3 | 3.5 |
| WCKG0081008 | 11"/28 | Tie on card | 72 | 13.58 x 13.39 x 15.35 | 0.046 | 1.6158 | 103824 | 9.2 | 7.3 |
| WCKG0081009 | 9.8"/25 | Tie on card | 72 | 13.58 x 12.2 x 14.96 | 0.041 | 1.4354 | 116856 | 8 | 6.2 |
| WCKG0081010 | 7.9"/20 | Tie on card | 72 | 13.58 x 10.63 x 14.96 | 0.035 | 1.2502 | 134208 | 6.8 | 5.3 |

Food tongs

Product features:

Stainless steel tongs with silicone heads
Heat-resistant up to 230 °C / 446 °F
Lock for open/close
Hanging loop



FOOD TONGS

WCKT0081017 - 9"
WCKT0081018 - 13.8"

Colander

Product features:

Black protective coating on the bottom and handles that won't scratch counter or sink
Non-slip handles extend to rest on sink
Stainless steel mesh



EXPANDABLE COLANDER

WCKG0081015
Unit expands in width from 16.06" to 22.44"

Measuring tools

Product features:

Stainless steel with silicone grips



4 PIECE MEASURING CUP SET

WCKG0081016 - 60 mL (1/4 cup), 80 mL (1/3 cup), 125 mL (1/2 cup), 250 mL (1 cup)



4 PIECE MEASURING SPOON SET

WCKG0081017 - 1.25 mL (1/4 tsp), 2.5 mL (1/2 tsp), 5 mL (1 tsp), 15 mL (1 tbsp)

Sink strainer

Product features:

Made of silicone with a stainless steel frame
The silicone underside will not scratch the sink and inverts for simple emptying



SINK STRAINER

WCKG0081018 - Ø 4.53" x 1.77"

Flour sifter

Product features:

Stainless steel with silicone grips
One handed operation
3 layers of mesh



FLOUR SIFTER

WCKG0081019 - 7.9 mL (3 cups) capacity

Graters

Product features:

Stainless steel blades
Storage container

4 SIDED GRATER WITH CONTAINER

WCKG0081011 - 9.84" x 6.22" x 4.96"
coarse, medium, fine & slice blades



| Model no. | Packaging | Qty per carton | Carton dimensions (L" x W" x H") | CBM | Cuft | Qty per 40' HQ | Carton GW (kg) | Carton NW (kg) |
|-------------|-------------|----------------|----------------------------------|-------|--------|----------------|----------------|----------------|
| WCKT0081017 | Tie on card | 48 | 13.39 x 11.81 x 14.17 | 0.037 | 1.2970 | 86256 | 9.08 | 7.58 |
| WCKT0081018 | Tie on card | 48 | 16.54 x 12.8 x 10.43 | 0.036 | 1.2776 | 87552 | 10.2 | 9.2 |
| WCKG0081015 | Sleeve card | 6 | 17.72 x 16.93 x 9.06 | 0.045 | 1.5719 | 8892 | 6 | 5.5 |
| WCKG0081016 | Hang tag | 48 | 18.5 x 12.2 x 9.25 | 0.034 | 1.2093 | 92496 | 14.5 | 13.5 |
| WCKG0081017 | Hang tag | 72 | 15.75 x 8.66 x 11.81 | 0.026 | 0.9324 | 180000 | 6.5 | 5.9 |
| WCKG0081018 | Tie on card | 24 | 12.99 x 11.81 x 9.45 | 0.024 | 0.8392 | 66648 | 2.3 | 1.1 |
| WCKG0081019 | Hang tag | 36 | 19.29 x 13.39 x 17.52 | 0.074 | 2.6185 | 32040 | 7.8 | 6.8 |
| WCKG0081011 | Sleeve card | 12 | 17.72 x 10.43 x 15.75 | 0.048 | 1.6848 | 16596 | 5.4 | 4.8 |

COLORFUL COLLECTION

Kitchen tools and
gadgets available
in different colours

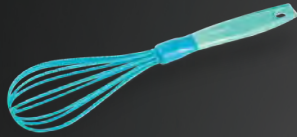


Kitchen tools



Product features:

Ideal for use with non-stick cookware
Nylon head is heat-resistant up to 210 °C/410 °F
Available in 7 colors



EGG WHISK

WCKT0080001



SPAGHETTI SERVER

WCKT0080002



COOKING TURNER

WCKT0080003



SLOTTED TURNER

WCKT0080004



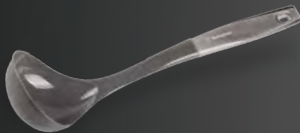
SLOTTED SPOON

WCKT0080005



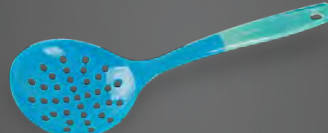
COOKING SPOON

WCKT0080006



SOUP LADLE

WCKT0080007



SKIMMER

WCKT0080008



POTATO MASHER

WCKT0080009

| Model no. | Product size (inch/cm) | Packaging | Qty per carton | Carton dimensions (L" x W" x H") | CBM | Cuft | Qty per 40' HQ | Carton GW (kg) | Carton NW (kg) |
|-------------|------------------------|-------------|----------------|----------------------------------|-------|--------|----------------|----------------|----------------|
| WCKT0080001 | 12.79"/32.5 | Tie on card | 48 | 15.35 x 12.8 x 13.39 | 0.043 | 1.5221 | 73488 | 5.68 | 3.88 |
| WCKT0080002 | 13.07"/33.2 | Tie on card | 48 | 15.35 x 8.07 x 15.75 | 0.032 | 1.1295 | 99024 | 4.68 | 3.68 |
| WCKT0080003 | 12.59"/32.9 | Tie on card | 48 | 15.35 x 8.07 x 15.75 | 0.032 | 1.1295 | 99024 | 4.84 | 3.94 |
| WCKT0080004 | 12.59"/32.9 | Tie on card | 48 | 15.35 x 8.07 x 15.75 | 0.032 | 1.1295 | 99024 | 4.82 | 3.82 |
| WCKT0080005 | 12.79"/32.5 | Tie on card | 48 | 15.35 x 7.68 x 14.96 | 0.029 | 1.0207 | 109584 | 4.78 | 3.78 |
| WCKT0080006 | 12.79"/32.5 | Tie on card | 48 | 15.35 x 7.68 x 14.96 | 0.029 | 1.0207 | 109584 | 4.84 | 3.84 |
| WCKT0080007 | 12.51"/31.8 | Tie on card | 48 | 16.54 x 16.14 x 9.06 | 0.04 | 1.3989 | 79968 | 5.32 | 4.08 |
| WCKT0080008 | 12.99"/33 | Tie on card | 48 | 15.55 x 8.46 x 15.75 | 0.034 | 1.1998 | 93216 | 5.16 | 4.16 |
| WCKT0080009 | 10.82"/27.5 | Tie on card | 48 | 14.57 x 16.14 x 8.66 | 0.033 | 1.1788 | 94896 | 5.12 | 4.12 |

Kitchen gadgets



Product features:

Ergonomic colorful handles
Available in 7 colors



ICE CREAM SCOOP

WCKG0080001



CHEESE SLICER

WCKG0080002



GRATER

WCKG0080003



Y SHAPED PEELER

WCKG0080004



PIZZA SERVER

WCKG0080005



PIZZA CUTTER

WCKG0080006



PEELER WITH LEMON ZESTER

WCKG0080007



BOTTLE OPENER

WCKG0080008



GARLIC PRESS

WCKG0080009



CAN OPENER
WCKG0080010



ZESTER
WCKG0080011



SLICER
WCKG0080012

| Model no. | Product size (inch/cm) | Packaging | Qty per carton | Carton dimensions (L" x W" x H") | CBM | Cuft | Qty per 40' HQ | Carton GW (kg) | Carton NW (kg) |
|-------------|---------------------------|-------------|-------------------|-------------------------------------|-------|--------|-------------------|-------------------|-------------------|
| WCKG0080001 | 7.28"/18.5 | Tie on card | 48 | 18.7 x 10.04 x 6.69 | 0.021 | 0.7273 | 153840 | 3.63 | 2.4 |
| WCKG0080002 | 8.26"/21 | Tie on card | 48 | 19.09 x 10.83 x 6.3 | 0.021 | 0.7537 | 148416 | 3.86 | 2.59 |
| WCKG0080003 | 9.25"/23.5 | Tie on card | 48 | 17.91 x 11.61 x 9.45 | 0.032 | 1.1378 | 98340 | 5.22 | 3.99 |
| WCKG0080004 | 7.28"/18.5 | Tie on card | 48 | 18.31 x 9.84 x 6.3 | 0.019 | 0.657 | 170304 | 3.63 | 2.4 |
| WCKG0080005 | 11.65"/29.6 | Tie on card | 48 | 18.31 x 14.17 x 7.09 | 0.03 | 1.0643 | 105120 | 4.08 | 2.9 |
| WCKG0080006 | 8.46"/21.5 | Tie on card | 48 | 20.28 x 10.83 x 5.51 | 0.02 | 0.7003 | 159744 | 4.22 | 2.99 |
| WCKG0080007 | 8.26"/21 | Tie on card | 48 | 17.52 x 10.83 x 7.09 | 0.022 | 0.778 | 143808 | 3.81 | 2.59 |
| WCKG0080008 | 7.67"/19.5 | Tie on card | 48 | 19.88 x 10.43 x 6.69 | 0.023 | 0.8035 | 139248 | 4.4 | 3.22 |
| WCKG0080009 | 6.88"/17.5 | Tie on card | 48 | 18.31 x 12.99 x 10.24 | 0.04 | 1.4092 | 79392 | 7.26 | 5.9 |
| WCKG0080010 | 9.44"/24 | Tie on card | 48 | 17.13 x 12.2 x 14.76 | 0.051 | 1.7861 | 62640 | 14.97 | 13.52 |
| WCKG0080011 | 9.25"/23.5 | Tie on card | 48 | 17.91 x 11.61 x 9.45 | 0.032 | 1.1378 | 98304 | 5.22 | 3.99 |
| WCKG0080012 | 9.25"/23.5 | Tie on card | 48 | 17.91 x 11.61 x 9.45 | 0.032 | 1.1378 | 98304 | 5.22 | 3.99 |

Kitchen tools

Product features:

Heads raised off of the work surface to reduce messes

Ideal for use with non-stick cookware

Nylon head is heat-resistant up to 200 °C/392 °F

Ergonomic colorful soft grip handle



COOKING SPOON

WCKT0001001



SLOTTED SPOON

WCKT0001002



SLOTTED TURNER

WCKT0001003



SPAGHETTI SERVER

WCKT0001004



SOUP LADLE

WCKT0001005



SKIMMER

WCKT0001006

| Model no. | Product size (inch/cm) | Packaging | Qty per carton | Carton dimensions (L" x W" x H") | CBM | Cuft | Qty per 40' HQ | Carton GW (kg) | Carton NW (kg) |
|-------------|------------------------|-------------|----------------|----------------------------------|-------|--------|----------------|----------------|----------------|
| WCKT0001001 | 2.48"/6.3 | Tie on card | 144 | 15.55 x 24.41 x 16.54 | 0.103 | 3.6329 | 92304 | 17 | 15 |
| WCKT0001002 | 2.48"/6.3 | Tie on card | 144 | 15.55 x 24.41 x 16.54 | 0.103 | 3.6329 | 92304 | 17 | 15 |
| WCKT0001003 | 2.76"/7 | Tie on card | 144 | 15.55 x 24.41 x 16.54 | 0.103 | 3.6329 | 92304 | 17 | 15 |
| WCKT0001004 | 2.76"/7 | Tie on card | 144 | 14.76 x 24.41 x 18.9 | 0.112 | 3.9417 | 85104 | 18 | 16 |
| WCKT0001005 | 3.82"/9.7 | Tie on card | 144 | 16.34 x 24.41 x 18.11 | 0.118 | 4.1804 | 80208 | 19 | 17 |
| WCKT0001006 | 4.13"/10.5 | Tie on card | 144 | 16.34 x 24.41 x 16.54 | 0.108 | 3.8169 | 87840 | 18 | 16 |

Nylon kitchen tool set



8 PIECE NYLON KITCHEN TOOL SET

WCKT000107

Cooking spoon (2.48"/6.3 cm)

Slotted spoon (2.48"/6.3 cm)

Slotted turner (2.76"/7 cm)

Spaghetti server (2.76"/7 cm)

Soup ladle (3.82"/9.7 cm)

Skimmer (4.13"/10.5 cm)

Revolving stand

(5.12 x 5.12 x 14.37"/13 x 13 x 36.5 cm)



7 PIECE NYLON KITCHEN TOOL SET

WCKT008007A

Soup ladle (12.51"/31.8 cm)

Slotted spoon (12.79"/32.5 cm)

Cooking spoon (12.79"/32.5 cm)

Spaghetti server (13.07"/33.2 cm)

Slotted turner (12.59"/32.9 cm)

Skimmer (13"/33 cm)

Revolving stand

(14.09 x 5.11 x 5.51"/35.8 x 13 x 14.5 cm)

| Model no. | Packaging | Qty per carton | Carton dimensions (L" x W" x H") | CBM | Cuft | Qty per 40' HQ | Carton GW (kg) | Carton NW (kg) |
|-------------|-----------|----------------|----------------------------------|-------|--------|----------------|----------------|----------------|
| WCKT000107 | Color box | 12 | 22.83 x 17.32 x 15.75 | 0.102 | 3.6055 | 7752 | 13.4 | 12.6 |
| WCKT008007A | Color box | 4 | 13.98 x 13.98 x 14.76 | 0.047 | 1.6692 | 5584 | 4 | 2.5 |

Magnetic kitchen tool set

Product features:

Ergonomic handle with magnet inside
An innovative way to attach utensils on the rack
Ideal for use with non-stick cookware
Nylon head is heat-resistant up to 210 °C/410 °F
Wall fixing stickers and no drilling is needed



6 PIECE MAGNETIC KITCHEN TOOL SET

WCKT008006A

Slotted spoon (12.4"/31.5 cm)
Slotted turner (12.8"/32.5 cm)
Spaghetti server (12.8"/32.5 cm)
Ladle (12.2"/31 cm)
Skimmer (12.8"/32.5 cm)
Rack (17.13"/43.5 cm)
Wall fixing stickers x 2



6 PIECE MAGNETIC KITCHEN TOOL SET

WCKT008006B

Pizza cutter (8.46"/21.5 cm)
Ice cream spoon (7.2"/18.3 cm)
Peeler (8.27"/21 cm)
Cheese slicer (8.19"/20.8 cm)
Grater (8.66"/22 cm)
Rack (17.13"/43.5 cm)
Wall fixing stickers x 2

| Model no. | Packaging | Qty per carton | Carton dimensions (L" x W" x H") | CBM | Cuft | Qty per 40' HQ | Carton GW (kg) | Carton NW (kg) |
|-------------|------------------|----------------|----------------------------------|-------|------|----------------|----------------|----------------|
| WCKT008006A | Window Color box | 4 | 18.11 x 16.54 x 13.98 | 0.068 | 2.40 | 3408 | 11.12 | 7.12 |
| WCKT008006B | Window Color box | 12 | 18.11 x 12.99 x 19.49 | 0.075 | 2.65 | 9252 | 9.98 | 5.98 |

Kitchen gadgets

Product features:

Ergonomic colorful soft grip handles
Stainless steel function parts



STRAINER

WCKG0001001



ICE CREAM SCOOP

WCKG0001002



GRATER

WCKG0001003



PIZZA CUTTER

WCKG0001004



BOTTLE OPENER

WCKG0001005



PEELER

WCKG0001006



CAN OPENER

WCKG0001007

Kitchen tools set



8 PIECE KITCHEN GADGET SET

WCKG000108

Strainer (3.46"/8.8 cm)

Ice cream scoop (1.65"/4.2 cm)

Grater (2.24"/5.7 cm)

Pizza cutter (2.95"/7.5 cm)

Bottle opener (1.57"/4 cm)

Peeler (1.38"/3.5 cm)

Can opener (2.56"/6.5 cm)

Revolving stand

(5.12 x 5.12 x 10.24"/13 x 13 x 26 cm)

| Model no. | Product size (inch/cm) | Packaging | Qty per carton | Carton dimensions (L" x W" x H") | CBM | Cuft | Qty per 40' HQ | Carton GW (kg) | Carton NW (kg) |
|-------------|------------------------|-------------|----------------|----------------------------------|-------|--------|----------------|----------------|----------------|
| WCKG0001001 | 3.46"/8.8 | Tie on card | 72 | 20.47 x 11.42 x 12.4 | 0.048 | 1.6778 | 100008 | 6.76 | 5.76 |
| WCKG0001002 | 1.65"/4.2 | Tie on card | 96 | 15.75 x 11.81 x 14.76 | 0.045 | 1.5894 | 140736 | 9.16 | 8.16 |
| WCKG0001003 | 2.24"/5.7 | Tie on card | 72 | 16.54 x 11.81 x 11.81 | 0.038 | 1.3351 | 125712 | 7.7 | 6 |
| WCKG0001004 | 2.95"/7.5 | Tie on card | 72 | 15.75 x 11.81 x 11.81 | 0.036 | 1.2715 | 131976 | 8.56 | 7.56 |
| WCKG0001005 | 1.57"/4 | Tie on card | 72 | 15.75 x 11.81 x 11.22 | 0.034 | 1.2079 | 138888 | 6.83 | 5.83 |
| WCKG0001006 | 1.38"/3.5 | Tie on card | 144 | 23.23 x 11.81 x 14.76 | 0.067 | 2.3444 | 143136 | 10.65 | 9.65 |
| WCKG0001007 | 2.56"/6.5 | Tie on card | 48 | 18.9 x 10.63 x 11.22 | 0.037 | 1.3046 | 85728 | 12.71 | 10.71 |
| WCKG000108 | - | Color box | 48 | 15.55 x 8.46 x 15.75 | 0.034 | 1.1998 | 93216 | 5.16 | 4.16 |

SALT AND PEPPER MILLS

Your seasoning tools
for better taste



WHSPMSET03

SALT AND PEPPER MILLS

Product features:

- Single hand electric push button operation
- Easy refill design
- Ceramic grinding mechanism
- Stainless steel mill body
- Transparent viewing window
- LED ring lighting
- Requires 6 x AAA batteries per mill (not included)



TRANSPARENT VIEWING WINDOW EASY REFILL DESIGN

| Model no. | Product size (inch/cm) | Packaging | Qty per carton | Carton dimensions (L" x W" x H") | CBM | Cuft | Qty per 40' HQ | Carton GW (kg) | Carton NW (kg) |
|------------|--------------------------|-----------|----------------|----------------------------------|-------|--------|----------------|----------------|----------------|
| WHSPMSET03 | 2.05 x 8.54 / 5.2 x 21.7 | Color box | 12 | 15.08 x 10.43 x 10.83 | 0.028 | 0.9858 | 28368 | 8.9 | 8.4 |

WHSPMSET04

2 IN 1 SALT AND PEPPER MILL

Product features:

- Single hand electric push button operation
- Easy refill design
- Ceramic grinding mechanism
- Stainless steel mill body
- Transparent viewing window
- Requires 6 x AAA batteries per mill (not included)



TRANSPARENT VIEWING WINDOW



EASY REFILL DESIGN



Dinnerware and
Serveware

| Model no. | Product size (inch/cm) | Packaging | Qty per carton | Carton dimensions (L" x W" x H") | CBM | Cuft | Qty per 40' HQ | Carton GW (kg) | Carton NW (kg) |
|------------|--------------------------------------|-----------|----------------|----------------------------------|-------|--------|----------------|----------------|----------------|
| WHSPMSET04 | 2.68 x 2.44 x 6.73 /6.8 x 6.2 x 17.1 | Color box | 24 | 14.96 x 12.4 x 8.86 | 0.027 | 0.9513 | 58800 | 10 | 9.4 |

CUTLERY AND KNIFE ACCESSORIES

Cutlery and knife set
to keep your cooking
skills sharp



23 Piece knife block set

Product features:

Ergonomic handle

Knife: Stainless steel (2cr13) + Plastic (PP)

Sharpener: Iron + Plastic (PP)

Scissors: Stainless steel (2cr13) + Plastic (PP + TPR)

Block: Oak + Pine wood

WCKF0058AC

8" (20.5 cm) chef knife, 1.5 mm x 1

8" (20.5 cm) slicing knife, 1.2 mm x 1

7.75" (19.5 cm) bread knife, 1.2 mm x 1

6" (15 cm) cleaver knife, 1.5 mm x 1

6.75" (17 cm) santou knife, 1.5 mm x 1

5" (12.5 cm) santou knife, 1.2 mm x 1

5.5" (14 cm) utility knife, 1.2 mm x 1

5" (12.5 cm) bread knife, 1.2 mm x 1

5" (12.5 cm) boning knife, 1.0 mm x 1

3.5" (9 cm) paring knife, 1.0 mm x 1

3" (7.5 cm) paring knife, 1.2 mm x 1

2.75" (7 cm) peeling knife, 1.2 mm x 1

4.5" (11 cm) steak knife, 1.0 mm x 8

Knife sharpener x 1

Kitchen scissors x 1

22 slot block x 1



6 Piece kitchen knife block set

Product features:

Ergonomic handle

Full tang design

Magnetic wooden knife block

Block - folds down for easy storage when not in use

WCKFOO56BK

7.75" (19.5 cm) chef knife, 2.5 mm x 1

8" (20 cm) slicer knife, 2.5 mm x 1

8" (20 cm) bread knife, 2.5 mm x 1

4.75" (12 cm) utility knife, 2.0 mm x 1

3.25" (8 cm) paring knife, 2.0 mm x 1

Knife block (black marble color) x 1



6 Piece ceramic knife block set

Product features:

Ergonomic colorful soft grip handle
Advanced ceramic blade
Contemporary knife block

WCKFSO001006

3" (7.5 cm) paring knife x 1

4" (10 cm) utility knife x 1

5" (12.5 cm) utility knife x 1

6" (15 cm) chef knife x 1

Y-shaped peeler x 1

Acrylic knife block x 1



4 Piece paring knife

Product features:

Stainless steel 420

Plastic PP handle

WCKTSC14412 - 2.5" / 6.5 cm



Basic knife set

Product features:

Stainless steel 420

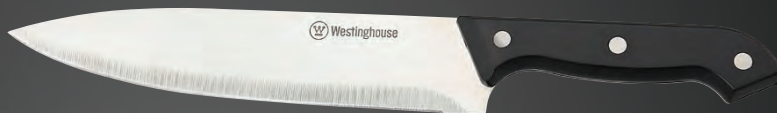
UTILITY KNIFE

WCKTSC14204 - 5.5"/ 14 cm



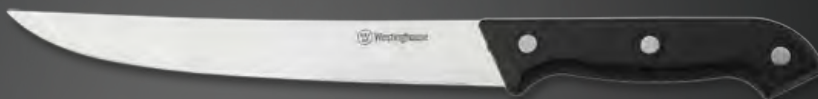
COOK KNIFE

WCKTSC14208 - 8"/ 21 cm



CARVING KNIFE

WCKTSC14209 - 8"/ 20 cm



CLEAVER KNIFE

WCKTSC14211 - 6"/ 16 cm



PARING KNIFE

WCKTSC14212 - 3.15"/ 8 cm



STEAK KNIFE

WCKTSC14214 - 4.25"/ 11 cm



SANTOKU KNIFE

WCKTSC14217 - 5"/ 12.5 cm



SANTOKU KNIFE

WCKTSC14219 - 7"/ 17.5 cm



| Model no. | Product size (inch/cm) | Packaging | Qty per carton | Carton dimensions (L" x W" x H") | CBM | Cuft | Qty per 40' HQ | Carton GW (kg) | Carton NW (kg) |
|--------------|---------------------------|-------------------|-------------------|-------------------------------------|-------|--------|-------------------|-------------------|-------------------|
| WCKF0058AC | - | Color box | 4 | 19.29 x 12.99 x 17.52 | 0.072 | 2.5415 | 3668 | 15.85 | 15.2 |
| WCKF0056BK | - | Color box | 4 | 11.02 x 4.92 x 14.17 | 0.013 | 0.4450 | 20952 | 7.99 | 7.39 |
| WCKFS0001006 | - | Color box | 4 | 15.94 x 10.24 x 13.39 | 0.036 | 1.2645 | 7372 | 3.06 | 2.56 |
| WCKTSC14412 | 2.5"/6.5 | Blister card | 48 | 9.25 x 7.87 x 7.87 | 0.009 | 0.3320 | 337008 | 2.7 | 0.4 |
| WCKTSC14204 | 5.5"/14 | Blister card | 48 | 13.78 x 7.48 x 13.39 | 0.023 | 0.7986 | 140112 | 4.5 | 3 |
| WCKTSC14208 | 8"/21 | Blister card | 48 | 16.54 x 8.27 x 13.39 | 0.03 | 1.0592 | 105600 | 7.6 | 5.6 |
| WCKTSC14209 | 8"/20 | Blister card | 48 | 16.54 x 8.27 x 13.39 | 0.03 | 1.0592 | 105600 | 6 | 3.8 |
| WCKTSC14211 | 6"/16 | Blister card | 48 | 14.57 x 10.63 x 13.39 | 0.034 | 1.1997 | 93264 | 9.3 | 7 |
| WCKTSC14212 | 3.15"/8 | Half blister card | 48 | 11.61 x 6.3 x 10.43 | 0.013 | 0.4418 | 253248 | 3.26 | 2.76 |
| WCKTSC14214 | 4.25"/11 | Blister card | 48 | 11.81 x 6.69 x 13.39 | 0.017 | 0.6124 | 182688 | 3 | 1.9 |
| WCKTSC14217 | 5"/12.5 | Blister card | 48 | 13.78 x 7.48 x 13.39 | 0.023 | 0.7986 | 140112 | 4.5 | 3 |
| WCKTSC14219 | 7"/17.5 | Blister card | 48 | 16.54 x 8.27 x 13.39 | 0.03 | 1.0592 | 105600 | 7.5 | 4.9 |

Kitchen shears and scissors

POULTRY SHEARS

WCKTSC97018

High quality stainless steel 420
Curved design allows incisions in cuts
Secure locking device keeps safe when storage



POULTRY SHEARS

WCKG0081012

Spring operation for easy use
Shears lock for safe storage
Soft grip, non slip handle
Curved blade with serrated edge that allows incisions in cuts
Color: Black



POULTRY SCISSORS

WCKG0081013

Soft grip, non slip handle
Bottle opener and grip are integrated into handle
Plastic protective sheath for safety and storage
Color: Black and grey



5 BLADE HERB SCISSORS

WCKG0081014

Soft grip, non slip handle
5 blades help make cutting quick and even
Plastic protective sheath for safety and storage
Color: Black and grey



MULTIUSE POULTRY SHEARS

WCKTSC93018



KITCHEN SHEARS

WCKTSE94018



| Model no. | Product size (inch/cm) | Packaging | Qty per carton | Carton dimensions (L" x W" x H") | CBM | Cuft | Qty per 40' HQ | Carton GW (kg) | Carton NW (kg) |
|-------------|---------------------------|----------------------|-------------------|-------------------------------------|-------|--------|-------------------|-------------------|-------------------|
| WCKTSC97018 | 10"/25 | Blister card | 48 | 13.78 x 11.42 x 14.96 | 0.039 | 1.3623 | 82128 | 10.6 | 7.5 |
| WCKG0081012 | 10"/25.5 | Tie on card | 48 | 13.58 x 10.63 x 22.64 | 0.054 | 1.8918 | 59136 | 10.44 | 9.85 |
| WCKG0081013 | 8.27"/21 | Sliding blister card | 48 | 13.98 x 11.02 x 14.96 | 0.038 | 1.3341 | 83856 | 8.6 | 8.11 |
| WCKG0081014 | 7.68"/19.5 | Sliding blister card | 48 | 12.8 x 10.63 x 22.64 | 0.05 | 1.7821 | 62784 | 8.82 | 8.27 |
| WCKTSC93018 | 9"/23.5 | Blister card | 48 | 13.78 x 11.42 x 13.78 | 0.036 | 1.2547 | 89136 | 9.7 | 6.6 |
| WCKTSE94018 | 9.84"/25 | Blister card | 48 | 13.78 x 11.42 x 13.78 | 0.036 | 1.2547 | 89136 | 8.7 | 5.3 |



FLATWARE

Elegance in your table
from your dinning set



Stainless steel flatware set

Product features:

Dishwasher safe

24 Piece flatware set

WCCL0004024

Dinner knife (8.94" / 22.7 cm) x 6
Dinner fork (7.76" / 19.7 cm) x 6
Dinner spoon (7.76" / 19.7 cm) x 6
Tea spoon (5.35" / 13.6 cm) x 6



24 Piece flatware set

WCCL0005024

Dinner knife (8.98" / 22.8 cm) x 6
Dinner fork (7.83" / 19.9 cm) x 6
Dinner spoon (7.68" / 19.5 cm) x 6
Tea spoon (5.39" / 13.7 cm) x 6



24 Piece flatware set

WCCL0006024

Dinner knife (8.66" / 22 cm) x 6
Dinner fork (7.8" / 19.8 cm) x 6
Dinner spoon (7.91" / 20.1 cm) x 6
Tea spoon (5.28" / 13.4 cm) x 6



24 Piece flatware set

WCCL0007024

Dinner knife (8.27" / 21 cm) x 6
Dinner fork (7.76" / 19.7 cm) x 6
Dinner spoon (7.52" / 19.1 cm) x 6
Tea spoon (5.39" / 13.7 cm) x 6



24 Piece flatware set

WCCL0008024

Dinner knife (8.27" / 21 cm) x 6
Dinner fork (7.76" / 19.7 cm) x 6
Dinner spoon (7.52" / 19.1 cm) x 6
Tea spoon (5.39" / 13.7 cm) x 6



| Model no. | Packaging | Qty per carton | Carton dimensions (L" x W" x H") | CBM | Cuft | Qty per 40' HQ | Carton GW (kg) | Carton NW (kg) |
|-------------|-----------|----------------|----------------------------------|-------|--------|----------------|----------------|----------------|
| WCCL0004024 | Color box | 12 | 14.17 x 10.55 x 12.8 | 0.031 | 1.1075 | 25248 | 12.8 | 12 |
| WCCL0005024 | Color box | 12 | 14.17 x 10.55 x 12.8 | 0.031 | 1.1075 | 25248 | 12.8 | 12 |
| WCCL0006024 | Color box | 12 | 14.17 x 10.55 x 12.8 | 0.031 | 1.1075 | 25248 | 12.5 | 11.5 |
| WCCL0007024 | Color box | 12 | 14.17 x 10.55 x 12.8 | 0.031 | 1.1075 | 25248 | 12.8 | 11.8 |
| WCCL0008024 | Color box | 12 | 14.17 x 10.55 x 12.8 | 0.031 | 1.1075 | 25248 | 12.8 | 11.8 |



CONTACT US

Star Glory Limited

905-907, 9th Floor, Tower 1, Cheung Sha Wan Plaza, 833
Cheung Sha Wan Road, Lai Chi Kok, Kowloon, Hong Kong
e-mail: westinghouse@starglory.com.hk
www.starglory.com.hk

Exclusive distributor

