

ScanN Cut DX



+IMAGINATION



Wireless Network
Ready*

*internet connection required

SDX125

What's the formula for perfect crafting success? Just add imagination!
Now, the only home and hobby cutting machine with a built-in scanner,
has essentially everything else you need to create stunning projects.

CUTTING THROUGH VIRTUALLY EVERYTHING YOU CAN IMAGINE

+ Blade Sensor
Technology

+ Whisper Quiet
Mechanism

+ Cuts up to 0.1"
(3mm) thick

BLADE SENSOR TECHNOLOGY

- Auto blade detects the thickness of material
- No blade adjustment or material selection required

CUTS UP TO 0.1" (3MM) THICKNESS

- Cut materials such as foam and felt virtually effortlessly with auto blade†

STAND-ALONE

- 5" LCD touchscreen display for easy editing of cut data

BUILT-IN SCANNER

- No need to count mat blocks! Place your pattern on your scanned material

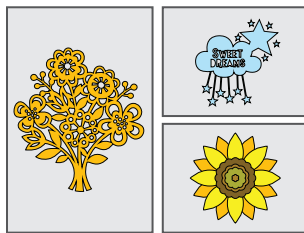
ADVANCED EDITING WITH CANVASWORKSPACE

- Create, edit, convert, and send cut data to and from the machine



UP TO 600 DPI FOR THE SCAN TO USB FUNCTION

Turn your scanned images into unique one-of-a-kind cut designs and patterns.

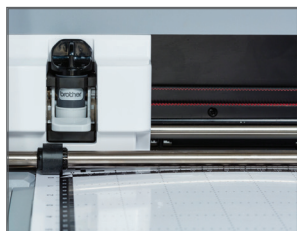


682 BUILT-IN DESIGNS, INCLUDING 100 QUILT PATTERNS, PLUS 9 LETTERING FONTS



SEAM ALLOWANCE AND SEWING GUIDELINES

Add a seam allowance in 1/4" increments to assist you in piecing together fabric pieces for your quilts, clothing, and more.



PRECISE AND QUICK CUTS

Cuts faster than previous ScanNCut models*.



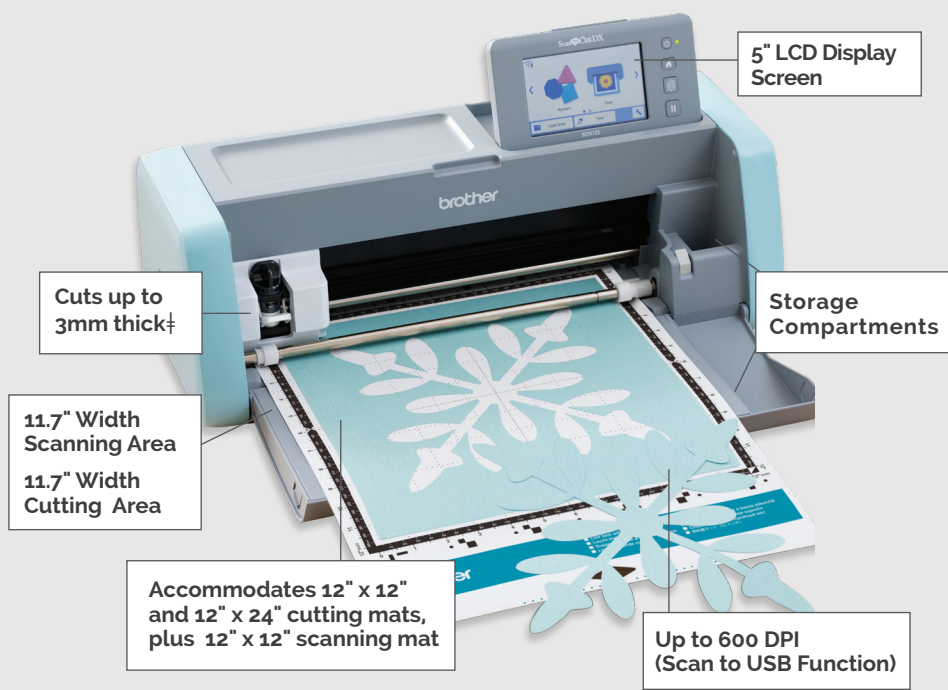
SCANNER HEIGHT POSITION LEVER

Two positions for the built-in scanner. Position 1 (lower position) is used when scanning thin materials. Position 2 raises the scanner glass higher to scan thicker materials, up to 0.1" (3mm) thickness.



BUILT-IN STORAGE AND MORE!

Ample storage for blades, touch pen, and other tools, right inside the front cover! Plus, the storage area can be used as a wide-flat work surface for securing materials to the mat.



STANDARD INCLUDED ACCESSORIES:

- Auto Blade and Holder
- Standard Tack Adhesive Mat 12" x 12"
- Cardstock 12" x 12"
- Pen Holder
- Black Color Pen
- Touch Pen (Stylus)
- Spatula
- Accessory Bag
- Power Cord
- Getting Started Guide

OPTIONAL ACCESSORIES AVAILABLE SOLD SEPARATELY

Thin Fabric Auto Blade

- Designed to cut fabric used for quilting and raw edge appliqué purposes‡

Matless Cutting - Roll Feeder Attachment

- Expand creative possibilities, 251.46mm (9.9") wide design/cut area, and up to 1785.3mm (70.2" or 5.85') in length*.

brother
at your side

HADSSSDX125

For more information, call 1.800.4.A.Brother or visit ScanNCut.com

[f](https://www.facebook.com/brothercraftsusa) [y](https://www.youtube.com/brothercraftsusa) [i](https://www.instagram.com/brothercraftsusa) [p](https://www.pinterest.com/brothercraftsusa) /brothercraftsusa [t](https://www.twitter.com/brothercraftsusa) /brothercraftsusa

*Based on cutting a straight line along the XY axis. Images are for illustrative purposes only. †Material compatibility may vary. Always perform a trial/test cut to confirm a successful cut. ‡Design and cut area are 9.9" (251.8mm) When using Brother specified material and conditions. This attachment includes a guide rail with trimmer blade to ensure straight cuts of rolled material for smooth feeding and alignment. Specifications subject to change. ©2018 Brother International Corporation.