

FRANMARA®

C E L E B R A T I N G **50** *Years*
1970-2020

OVER **550** NEW ITEMS
IN THIS CATALOG

DESIGNED FOR
Superior
PERFORMANCE



A BUYER'S GUIDE

Featuring Quality Corkscrews, Barware,
Wine and Cheese Accessories.



Here are some of the **550 NEW** Products Presented.

To our Friends,
It is indeed a pleasure for us to
present this new catalog to you!

You'll see a broad selection of some
550 New products in all categories
such as drinkware (including Moscow
Mules), of course, many new corkscrews,
Apollo Bev-Ware™, WineChest™ Wooden
Wine Boxes, a Suave™ Leatherette Line,
the Monopol line, an expanded barware
line and much more.

We have reached our 50th year in
business. What's our secret for longevity?
A. We strive to get better each year. **B.** We
keep expanding our product line. **C.** We
keep large quantities of items in inventory.
D. Last but not least, we have a great working
team at our company.

We will be pleased to serve you.

Sincerely,
The Staff at Franmara®, Inc.

Front Cover: 3136 Aria Open Design Double Lever Corkscrew
in Black see page 13, 2088 Bellagio Corkscrew see page 55.

Back Cover: 8453 Caterer's Condiment Holders Four 1 Pint
Compartments see page 245, 8037 Lustrum™ Cocktail Shaker
Set, 24 oz. see page 226, 8442 Rubber Large Bar Spill Mat see
page 244, 8528 Old Fashioned Tumbler Droplet Base, Acrylic
14 oz. see page 153, 7915 Party Parasol see page 248, 8396
Black Coated Moscow Mule 14 oz. see page 147, 8492
Japanese-Style Stainless Steel Double Jigger, 1/2 oz. - 1 oz.
see page 231.

Design and Production: Salvador Chavarin and Brittany Hunter
Cover Design: Salvador Chavarin

NEW FEATURE- Cross Reference
Catalog Pages with Price List Pages
(Wholesale and Advertiser's Price Lists)

WHL. 3
Price List

ADV. 3
Price List



Franmara's® facility is a solar powered building. We estimate that we are saving the environment approximately 965,301 lbs. (Co2 Emmision) of avoided pollution annually, and equivalent to 25,201 trees planted.

Table of Contents

FRANMAR[®]

SINCE 1970



Corkscrews

Waiter's Corkscrews: 4-43
Crumb Scrapers: 44-45
Packaging For Corkscrews/Stoppers: 46-48
2-Prong Extractors: 49
Traveler's & Pocket's Corkscrews: 50-51
Wing Corkscrews: 52-55
Antique Corkscrews: 56
Specialty & Continuous Corkscrews: 57-61
Hand-Held/Electric Uncorking Machines: 62-65
Professional Uncorking Machines: 66-69
Corkscrew Gift Sets: 70-71



Wine Accessories

Monopol Products: 72-73
Cellar Dine Collection: 74-75
Foil Cutters: 76
Champagne Openers: 77-79
Champagne/Wine Stoppers: 80-87
Champagne/ Wine Pourers: 88-93
Wine Aerators: 94-98
Wine Preservation: 99-103
Wine Thermometers/Collars & Tastevins: 104-105
Wine Tasting/Service Aids: 106-111
Wine Charms/Tags/Pens: 112-115
Wine Party Accommodations: 116-123
Lapel Pins/Wine Bottle Lights: 124-127
Wine Games: 128
Trivets/Coasters/Bottle Stands: 129-135
Cork Products: 136-137
Suave™ Laser Engravable Leatherette: 138-140



Drinkware

Apollo™ Bev-Ware: 141-143
Stainless Steel Drinkware: 144-146
Moscow Mules: 147
Acrylic Glassware: 148-153
Glassware: 154-158
Beer Glassware: 159-160
Decanters & Carafes: 161-168
Decanter Accessories: 169-172



Champagne & Wine Coolers

Coolers & Buckets: 173-189
Wine Chiller Bags & Sleeves: 190-196



Wine Bottle Carriers

Wine Bottle Bags & Boxes: 197-205
Wine/Champagne Bottle Gift Bags: 206-219
Wine Travel Accessories: 220-224



Barware

Cocktail Shakers: 225-229
Bar Tools & Accessories: 230-236
Stainless Steel Straws: 237
Shot Glasses: 238-239
Liquor Pourers: 240-243
Bar Service Items: 244-247
Disposables: 248-249
Bottle & Can Openers: 250-253
Bar Service Cooling Tools: 254-255
Flasks: 256-261
Bar Sets: 262-264
Beer Accessories: 265-266



Cheese Accessories

Cheese Cutlery: 267-270
Cheese Sets: 271-272
Cheese Boards: 273-281
Cheese Accessories: 282



Gourmet Peppermills

Peppermills: 283-285



Cigar Accessories

Cigar Accessories: 286-287



Modularack[®]

Modularack[®] Original: 288-299
Modularack[®] Table Tops: 300
Modularack[®] Pro: 301-305
Vinrack™/Vinrack™ Packaging: 306-307



Index

Carded Lines, Packaging, Displays: 308-310
Index By Item Name: 311-315
Index By #: 316-319
Imprinting: 320-323



Pulltap's®

The Original Double Lever Corkscrew

5151 Pulltap's® Premium Classic Corkscrew, Made in Spain

Contoured alloy solid handle. Bronze, Graphite, Chrome, and Gold. 4-5/8" long. Pkg. Code*: BXR.

Imprint area: 1-3/4" X 5/16" across top of handle. Screen/Pad Print or Laser. NOTE: 5151 replaces the 5150 series.

5112 Pulltap's® Toledo Corkscrew - Made in Spain

Unique hinged double-lever system. Hardwood inlaid handle. High-polished nickel plate, curved blade. Non-stick spiral. 4-3/4" long. Pkg. Code*: BX

Imprint area on metal side: 1/2" X 3/16". Laser.



Made in Spain

5112

Thoughtful design
and careful craftsmanship

5151



Made in Spain

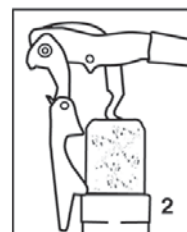
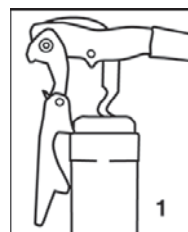
Bronze
64

Graphite
63

Chrome
59

Gold
68

*Features a Unique Hinged
Double-Lever System



Made in Spain

5106



Made in Spain

5105

5105 Pulltap's® Classic Corkscrew

One-piece, zinc alloy molded handle. Non-stick spiral. Knife blade, cap lifter. Colors: Burgundy or Black. 4-3/4" long. Pkg. Code*: BXR.

Imprint area: 1-3/4" X 5/16" across top of handle. Screen/Pad Print or Laser across top of handle.

Burgundy
03

Black
01

Pulltap's®

The Original Double Lever Corkscrew

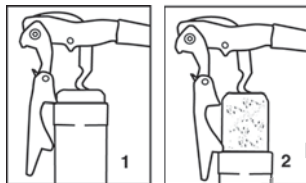
5100 Pulltap's® Corkscrew

Unique hinged double-lever system. Serrated knife blade. Contoured steel handle. Non-stick spiral. 4-3/4" long. Pkg. Code*: BU, C, PC.

Decoration area: 1-3/4" X 5/16". Screen/Pad/Laser/Doming - Print across top of handle.

Decoration area: 1-3/4" X 5/16". Laser with Color fill. Variety of colors available. (Except Stainless Steel 76).

*Hinged Double-Lever System



5100
All Stainless Steel 76



5100
Black 01

**New Lower
Prices!**

See Page 320-321
For Full Color Doming.

20 Colors Available For The 5100



Electric Blue 09 Purple 47 Pink 33 Dark Green 12 Olive 19 Yellow 39 Orange 43 Hazelnut 28 Copper 66 Red 20 Burgundy 03 White 24

new!

NON-SERRATED BLADE

Pulltap's® Corkscrew

new

new



Chocolate 27 Turquoise 10 Dark Blue 05 Silver Gray 70 Black 01 Lime Green 16 Dark Pink 22 Stainless Steel 76

5101 Pulltap's® Non-Serrated Blade Corkscrew

Pulltap's® straight blade, black handle only. Same as 5100 except knife blade is not serrated. Black color only. Pkg. Code*: BU, C, PC.



5101
Black 01



Custom Imprinting Available

Decoration area: 1-3/4" X 5/16". Laser with Color fill. Variety of colors available. (Except Stainless Steel 76).

Pulltap's®



Made in Spain

EVOLUTION WAITER'S CORKSCREWS



5115



5113

5115 Pulltap's® Evolution Deluxe Crystal Corkscrew (26 Crystals)

Two-step corkscrew, chrome plated with 26 clear, randomly placed Swarovski® crystalized elements in two different diameters, embedded into the top of the handle. Pkg. Code: BXR (White leatherette jeweler's box)

Imprint area on case: 2-3/4" x 1-1/4". Screen/Pad Print.

ColorBlast Imprint area on case: 3" x 3".

5116



5114



5113 Pulltap's® Evolution Standard Crystal Corkscrew (6 Crystals)

Two-step corkscrew chrome plated with six Swarovski® glass crystals embedded into top of handle.

Non-stick spiral. 4-5/8" long. Pkg. Code: BXR.

Imprint area: 1-3/4" X 5/16" across top of handle. Metal Laser.

Imprint area on case: 2-3/4" x 1-1/4". Screen/Pad Print.

ColorBlast Imprint area on case: 3" x 3".

5114 Pulltap's® Evolution Rainbow Crystal Corkscrew

Two-step corkscrew, chrome plated with 26 multi-colored, randomly placed Swarovski® crystalized elements in two different diameters, embedded into the top of the handle. Non-stick coated spiral. 4-5/8" long. Pkg. Code: BXR

Imprint area on case: 2-3/4" x 1-1/4". Screen/Pad Print.

ColorBlast Imprint area on case: 3" x 3".

5116 Pulltap's® Evolution Amber Crystal Corkscrew

Two-step corkscrew, chrome plated with 26 amber color, randomly placed Swarovski® crystalized elements in two different diameters, embedded into the top of the handle. Non-stick coated spiral. 4-5/8" long. Pkg. Code: BXR

Imprint area on case: 2-3/4" x 1-1/4". Screen/Pad Print.

ColorBlast Imprint area on case: 3" x 3".

CORKSCREWS

Laser
Engraved



3275
Metallic Black
01

Anodized
Aluminum
Body

Lisse™

Beautiful, sleek compact design!

3275 Lisse™ Metallic Corkscrew



3275
Metallic Burgundy
03

3275
Metallic Red
20

3275
Metallic Pink
33

3275
Metallic Blue
09

3275
Metallic Green
13

3275
Metallic Lavender
49

3275 Lisse™ Two-Step Waiter's Corkscrew, Anodized Aluminum Handle

Smooth and sleek. Aluminum body. Both two-step boot lever and knife blade made of stainless steel. Non-stick spiral 4-3/4" long. Natural Aluminum and the following anodized metallic colors.

Pkg. Code: BX, PC

Imprint area: 2" X 3/8". Laser

3274 Lisse™ Two-Step Waiter's Corkscrew, Enameled Steel Handle

Smooth and sleek. Steel body. Both two-step boot lever and knife blade made of stainless steel. Non-stick spiral 4-3/4" long with soft matte finish in colors.

Pkg. Code: BX, PC.

Imprint area: 2" X 3/8". Laser

3276 Lisse™ Two-Step Waiter's Corkscrew, Rosewood Handle

3277 Lisse™ Two-Step Waiter's Corkscrew, Olivewood Handle

3278 Lisse™ Two-Step Waiter's Corkscrew, Walnut Handle

Specialty wood handle versions of the popular Lisse™ two step corkscrew. 4-3/4" long. Pkg. Code: BX, PC

Imprint area: 2" X 3/8". Laser

Packaging Options (Sold Separately)

Bamboo Box Two Piece, Window Lid (90-081)

Pkg. Code: BU

Imprint area on lid: 3" X 1/2" Pad Print.

Aluminum Gift Box (90-0400)

Pkg. Code: BU

Imprint area on lid: 5" X 1".

ColorBlast

Imprint area on lid: 2-1/2" X 1".



new

3274 Lisse™ Corkscrew Enameled Steel Body



3275
Metallic Bronze
64

3275
Natural Aluminum
60

3275
Metallic Orange
43

3274
Matte Black
01

3274
Matte Burgundy
03

3274
Matte Blue
09

3274
Matte Green
13

Lisse™ Corkscrew Wood Body

new

new



3276
Rosewood

3277
Olivewood

3278
Walnut

CORKSCREWS

new
2036

Foil Cutter



Hot Stamp
Sample

Black 01

Burgundy 03

Dark Blue 05

White 24



- Firm Handle
- Compact
- Balena = Whale (in Italian)

See the Boomerang™ Foil Cutter on page 76.



2036 Balena-Compact Boomerang™ Waiter's Corkscrew

This handy double-lever corkscrew is the latest addition to the Boomerang™ family. Fitted into a compact 4-7/8" length is the full-sized extendable four-wheel "FOILKUT" system foil cutter. Pkg. Code: BU, PC.

Imprint area: 2" X 1/2" high. Hot Stamp or Screen/Pad print, *ColorBlast*.

All Boomerang™ Corkscrews are

Made in Italy

2028

Two-Step Lever

Press here to activate



Black 01

Burgundy 03

2028 Quik-Snap Two-Step Boomerang™ Corkscrew

A major Waiter's Corkscrew innovation. Same configuration as 2031 with the addition of a "Snap Out" Feature. Push a button on the handle and both the boot lever and spiral snap out automatically without any additional pulling!! 5-1/4" long. Pkg Code: BU.

Imprint area: 2" X 5/16" high. Hot Stamp or Screen/Pad print, *ColorBlast*.

Burgundy 03

2034

White 24



2031/2034/2035/2037
Boomerang™ patented
retractable "Foilkut" system

Black 01

2034T

2034 Boomerang™ Waiter's Corkscrew, Standard Lever

2034T Boomerang™ Waiter's Corkscrew, Non-Stick Spiral

Patented floating axis** design and "FOILKUT" system. 5-5/8" long. Large imprint area. Black, Burgundy and White. Non-stick coated spiral available with black or burgundy handle. Pkg. Code: BU, C, PC.

Imprint area: 2-3/4" X 3/8". Hot Stamp/Screen/Pad Print, *ColorBlast*.



Black 01

2035

Black 01



Burgundy 03

White 24

2035 Super Boomerang™ Waiter's Corkscrew With Knife Blade, Standard Lever

Floating axis (see pg.9, upper left) design and patented "FOILKUT" system. 5-5/8" long with serrated knife blade. Large imprint area. Black, Burgundy and White. Pkg. Code: BU

Imprint area: 2-3/4" X 3/8". Hot Stamp/Screen/Pad Print,

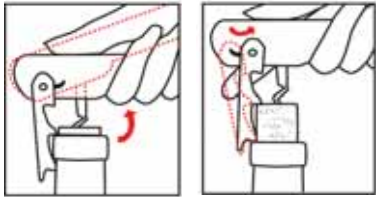


Black
01

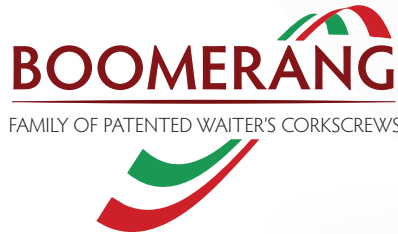


Made in Italy

Patented Two-Step Lever



Floating Axis



Black
01



18 Colors Available for 2031



Black 01 Burgundy 03 Dark Yellow 41 Light Green 18 Apple Green 17 Dark Green 12 Orange 43 Dark Blue 05 Yellow 39 Red 20 Purple 47

4 Translucent Colors for 2031

Soft-Touch Finish



Fuchsia 38 Pink 33 White 24 Translucent Green 14 Translucent Blue 06 Translucent Red 21 Translucent Pink 37



2037NIC 2037 - All Black

2031 Boomerang™ Two-Step Corkscrew - Available in 18 Colors

2037 Boomerang™ Two-Step Soft-Touch Corkscrew - All Black

2037NIC Boomerang™ Two-Step Soft-Touch Corkscrew - Nickel Lever And Spiral

The boot lever locks up straight during insertion. With the spiral fully inserted into the cork, the first step extracts about 7/8" of the cork. Press the boot lever in and the second lever pulls the rest of the cork straight out. The secret is the "crescent" in the handle that keeps the spring loaded floating axis in a vertical position. Extendable four-wheel "FOILKUT" system foil cutter. Nickel plated spiral. Compact 5-1/4" long. Pkg. Code: BU, C, PC. Imprint area: 2" X 5/16". Hot Stamp/Pad Print.

Packaging Code: BU=Factory Bulk Packed BX=Factory Boxed BXR=Retail Boxed C=Regular Carded PC=Premium Carded

WHL. 2
Price List

ADV. 2
Price List

CAPITANO®

PROFESSIONAL WAITER'S CORKSCREW

Radiant High Gloss Handles

2015



Ruby Wine
04



Vineyard Green
15



Imperial Blue
07



Silver Cloud
67



Nugget Gold
69



Shale Blue
11

2015 Capitano® Waiter's Corkscrew, Radiant Handle

The attractive, new radiant ABS handle has a special high gloss finish.

Pkg. Code: BU, C, PC.

Imprint area: 2-3/4" W X 5/16" H.

Hot Stamp/Pad Print/Laser and *ColorBlast*

2013 Capitano® Waiter's Corkscrew, "Sure-Grip" Handle

2013

For a solid, non-slip grip, this Capitano® comes with a matte rubberized surface coat.

Pkg. Code: BU, C, PC.

Imprint area: 2-3/4" W X 5/16" H. Laser

2017 Capitano® Waiter's Corkscrew, Translucent Handle

Clearly Capitano®, these new translucent colors make a bold statement. Pkg. Code: BU, C, PC.

Imprint area: 2-3/4" W X 5/16" H. Screen or *ColorBlast*

Custom Imprint Available.

2015 Laser Engraved



2013 Laser Engraved



2017 Color Blast Imprint



Boot Lever Laser Engraved

Imprint area: 2-3/4" W X 5/16" H.

Hot Stamp/Pad Print/Laser and *ColorBlast*

Imprint area on Boot Lever: 1-3/4" W X 3/8" H. Laser.

Sure-Grip Rubberized Handles



Ruby Wine
04



Nugget Gold
69



Vineyard Green
15



Shale Blue
11

Translucent Handles



Translucent
Red 21



Translucent
Blue 06



Translucent
Green 14

See page 11 for
custom options for Spirals,
Blades and Boot Levers.



ASSEMBLED
IN U.S.A

CAPITANO®

PROFESSIONAL

WAITER'S CORKSCREW

Extra-long handle for a full-hand grip
increases your extracting leverage.



2016 Capitano® Waiter's Corkscrew, ABS Plastic Handle 14 Colors To Choose From

The Capitano® is unique because of its special elongated spiral. The pitch (distance between the twists) has been increased for easy, more positive insertion into the cork. The nickel plated spirals have the file grooved line, running down the spiral which cuts into the cork more quickly. Non-stick coated spiral is a smooth, non-file version made in France. Capitano corkscrews are 5-3/8" long by 1" Wide. Serrated blade.

Pkg. Code: BU, C, PC.

Imprint area: 2-3/4" W X 1/4" H. Hot Stamp/Pad Print, Doming
Boot Lever Imprint area: 1-3/4" W x 3/8" H. Laser

ColorBlast Imprint area: 2-3/4" W X 5/16" H.

"Best value" in a professional waiter's
corkscrew. The French spiral alone
is worth the price.

The perfect wedding favor
for wine lovers!



2016 Premium Carded



2016 **new**
Full Color Doming

new



2016
Hot Stamped

2016
Vinyl Wrapped

See Page 321
For Full Color Doming.

- Retail Packaging Available.
- Custom Imprint Available, included are New Full Color Doming and Vinyl Wrap process.

Custom Options For All Capitanos®

Choice of Spiral



Non-Stick Spiral Nickel Plated Grooved Spiral

Choice of Blade **new!**



Serrated Stainless Steel Blade Serrated Titanium Plated Blade Non-Serrated Stainless Steel Blade

Boot Lever Choices



Titanium Plated Boot Lever Stainless Steel Boot Lever

new!

2016NSB Capitano® Waiter's Corkscrew with Non-Serrated Blade

The Same as 2016 except the knife
blade is non-serrated. Pkg.

Code: BU, C, PC.

Imprint area: Same as 2016.

Custom options for Capitano® Corkscrews:

Spiral: Nickel Plated Grooved or Black Non-Stick Coated - **FREE**

Boot Lever: Stainless Steel or Titanium Plated Black Finish - **FREE**

Serrated Knife Blade: Stainless Steel or Titanium Plated Black Finish - **FREE**

Non-Serrated Knife Blade: Stainless Steel Finish - **FREE**

ABS Handle: Custom colors on 7,500 or more.

2016NSB with
Non-Serrated
Blade

2016 with
Serrated Blade

CAPITANO®

PROFESSIONAL WAITER'S CORKSCREW

2011M Marble



Extra-long handle for a full-hand grip increases your extracting leverage.

2011 Capitano® Waiter's Corkscrew, Designer Series Handle

Select from four decal patterns: Burlwood (2011B), Small Black and White checker design (2011C), White Marble decal (2011M) or Rainbow Spectrum (2011R). Nylon base, gloss finish.

Pkg Code: BU, C, PC.

Imprint area: 2-3/4" W X 5/16" H. Hot Stamp/Pad Print/Laser and *ColorBlast*

2012G Capitano® Waiter's Corkscrew, Greenwood Handle

2012O Capitano® Waiter's Corkscrew, Oak Handle

Resin-impregnated, wood-laminated handle. Greenwood (2012G), Oak (2012O). Pkg. Code: BU.

Imprint area: 2-3/4" W X 5/16" H. Laser Only

2012G

2012G
Greenwood

2012O

2012O
Oak

Custom Imprint Available.



2011M, Laser Engraved



2012O Laser Engraved

Imprint area: 2-3/4" W X 5/16" H. Hot Stamp/Pad Print/Laser and Color Blast.

Imprint area on Boot Lever: 1-3/4" W X 3/8" H. Laser.

Designer Series Handles

2011

2011C
Checker2011M
Marble2011B
Burlwood2011R
Rainbow

2010

2010
Chrome-Plated

2010 Capitano® Waiter's Corkscrew, Chrome-Plated Over ABS Handle

Extra-long handle for increased leverage. Elongated spiral for long corks. Serrated blade. 5-3/8" overall.

Pkg. Code: BU, C, PC. Imprint area: 2-3/4" W X 5/16" H. Laser Only



2010 Laser Engraved



new!

Aria™
Double Lever Corkscrew

3136



Black 01

3136



Red 20

Made in Italy

3136

Gold 68



3136

Silver 67



DISCOVER
the art of
INNOVATION
Italian Design - Italian Made

3136 ARIA Open Design Double Lever Corkscrew

3136SET ARIA Open Design Double Lever Corkscrew In High-Tech Aluminum Cap Tube

High precision steel and aluminum parts are put together into an "open air" (Aria) design. Originally styled for an Italian Auto Company. Colors: Black, Red, Gold and Natural Aluminum. 5" long. Pkg. Code: 3136 BX; 3136SET BXR.

Imprint area: 2" X 3/8", Laser

90-3137 Leather Pouch Only For 3136 Aria

Compact size fits easily into a pocket. Black. 5-1/2" long, 2" wide. Comes with brass button. Pkg Code: BU. Imprint area: 3" X 1-1/2", Laser or Screen

Personalize Your Corkscrew

With Your Logo On It!



Attractive

Packaging Design options

3136SET



90-3137



Two-Lever

Corkscrews

3191



Black 01

Burgundy 03

3188



Black 01

Burgundy 03

Blue 09

White 24

3191 Two-Lever Corkscrew

Double-step corkscrew uses two boot levers. Non-stick worm. Black and Burgundy. 4-5/8" long.

Pkg. Code: BU, C, PC. Imprint area: 2" X 1/4". Hot Stamp, Screen/Pad Print.

3188 Bi-Color Two-Lever Corkscrew

Binary enmeshed levers combine to make this effective corkscrew work well. The first lever extracts the cork about 3/4" from the bottle. The second lever completes the extraction. Non-stick worm. Each two color handle combines a soft feel outer material in gray. Interior colors: Black, Burgundy, Blue, and White. 4-5/8" long.

Pkg. Code: BU, PC.

Imprint area: 2" X 5/16". Hot Stamp, Screen/Pad Print.

3150 Crescendo™ Waiter's Corkscrew

Crescent opening in handle axis changes forward movement to automatically increase extraction power. Comfortable soft-touch gray rubber perimeter. Non-stick coated worm. Serrated blade. 3150: Black, Blue, Burgundy, and White (interior colors). 5-1/4" overall. Pkg. Code: BU, C, PC.

Imprint area: 2-1/2 X 5/16". Hot Stamp or Screen/Pad Print.

Crescendo™

Special Soft-Touch Two-Color Handle

3150



Black 01



Blue 09

Burgundy 03

White 24

3154 Single Pull Corkscrew

Extracts all corks effortlessly in one smooth, perfectly vertical motion. There is a unique lever system at work here. The pinion shafted spiral and boot lever are united into action by their connection on both sides to a central cogwheel. To use: insert the spiral into the cork. Push the handle down until the boot lever grips the bottle rim. Hold the lever onto the rim and pull the handle straight up until the cork is out. Result: the cork extracts in one continuous smooth motion. Foil cutter knife and easy crown cap opener included. 5-1/4" long.

Pkg. Code: BXR.

Imprint area: 1-1/4" X 5/16". Hot Stamp or Screen/Pad Print.

• Smooth Motion Corkscrew.

• Foil Cutter Knife.

• Built-in Bottle Cap Opener.

3154



muranoTM originale

3165

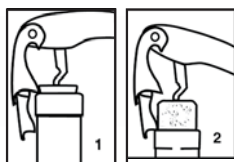
Made in Italy



Black 01

Elegant and Functional Design
All U.S. Patented

*Two-Step Operation



Custom Imprinting
Available



3165

Blue 09

Burgundy 03

Green 13

3166

Clear 26

Translucent
Blue 06

Translucent
Red 21

3165 MuranoTM Waiter's Corkscrew, Standard – Made in Italy

3166 MuranoTM Waiter's Corkscrew, Translucent Colors

Streamlined handle version of the Double-Power two-step extraction system. Cap lifter included in the boot lever. Non-stick spiral. Comfortable soft-touch under belly of handle. 3165 interior colors: Black, Blue, Burgundy and Green. 3166: Clear, Blue and Red. 4-5/8" long Pkg. Code*: BU, C, PC.

Imprint area: 2" X 5/16" 3165, 3166 on top. Screen/Pad Print.

Double PowerTM

Waiter's Corkscrew

Made in Italy



3162

Black 01

3162



Dark Blue 05

White 24

Burgundy 03

3161



Translucent
Blue 06

Clear 26

Translucent
Red 21

3161 Double PowerTM Waiter's Corkscrew (aka: Rialto), Translucent Colors

3162 Double PowerTM Soft-Touch Waiter's Corkscrew (aka: Rialto)

This compact corkscrew embraces a two-step extraction system with two enmeshed boot levers hinged on the same rivet. Also includes non-slip rubber top to give you a firmer grip when extracting. Non-stick spiral. Special soft-touch two-color handle. 3161 has the same efficiency of the 3162 above made more comfortable and compact with translucent handles. 4-5/8" long. Pkg. Code: BU, C, PC. Imprint area: 2" x 1/4". Screen/Pad Print.

CORKSCREWS

15

WHL. 3
Price List

ADV. 3-4
Price List

Packaging Code: BU=Factory Bulk Packed BX=Factory Boxed BXR=Retail Boxed C=Regular Carded PC=Premium Carded

ASI 55450

Enamel
Finish

5409

5409



Smart-Kut
Foil Cutter

DUO LEVER™

Smart - Kut Two Wheel Foil Cutter Corkscrew

5409 Duo-Lever™ Corkscrew With "Smart-Kut" Two Wheel Foilcutter, Enamel Handle

5411 Duo-Lever™ Corkscrew With "Smart-Kut" Two Wheel Foilcutter, Stainless Steel

Non-stick coated spiral, stainless steel boot lever, Black or Burgundy enamel finish. Unique capsule cutter. Also available in an all stainless steel body (5411). 4-3/4" long.

Pkg. Code: BX, PC. Imprint area: 1-3/4" x 5/16". Screen or Laser.

5401 Duo-Lever™ Corkscrew, "Soft-Feel" Rubberized Handle

Non-stick coated spiral, stainless steel boot lever. Unique capsule cutter. 4-3/4" long. Black or Burgundy. Rubberized. Pkg. Code: BX, PC

Imprint area: 1-3/4" x 5/16". Pad Print only.

5403 Duo-Lever™ Corkscrew, Gold Plated Handle

Non-stick coated spiral, stainless steel boot lever and serrated blade. Unique capsule cutter. 4-3/4" long.

With gold plated handle. Pkg. Code: BX, PC

Imprint area: 1-3/4" x 5/16". Laser.

5404 Duo-Lever™ Corkscrew, White Oak Pattern Handle Pkg. Code: BX, PC

Imprint area: 1-3/4" x 5/16". Laser or Screen

DUO LEVER™

New Style Hinged Double-Lever Systems

All Duo-Levers™
Have Stainless Steel
Boot Levers!

new

5404

5401

5401

5403



White Oak Pattern



Burgundy 03
Rubberized Finish



Black 01
Rubberized Finish



GOLD
PLATED

DUO LEVER™

All Plated Double-Lever Corkscrews

Beautiful Plated Eye-Catching Corkscrews

5407 Chrome (59)

new 5408 Copper (66)

new 5408 Gold (68)

new 5408 Graphite (63)

new 5406 Iridescent (72)



5407 Duo-Lever™ Corkscrew, Chrome Plated Handle

5406 Duo-Lever™ Corkscrew, Iridescent Plated Handle

Chrome or Iridescent plated over stainless steel body, boot lever, serrated blade and spiral. 4-3/4" long. Pkg. Code: BX, PC Imprint area: 1-3/4" x 5/16". Laser.

5408 Duo-Lever™ Corkscrew, Fully Plated Versions

A really awesome presentation. All metal parts (except for rivets) have been completely plated (body, lever, spiral and blade). Gold, Copper, Iridescent and Graphite plating is over a stainless steel base. 4-3/4" long Pkg. Code: BX Imprint area: 1-3/4" x 5/16". Laser.

Great Value! All with stainless steel boot lever and knife blade.

5400

Enamel
Finish



Burgundy 03

Black 01

DUO LEVER™

New Style Hinged Double-Lever Systems

12 Enamel Colors Available

new new new new new new



Orange 43

Yellow 39

Fuchsia 38

Apple Green 17

Aquamarine 08

Violet 47

DUO LEVER™

New Style Hinged Double-Lever Systems

5400 Duo-Lever™ Corkscrew, Enamel Handle

5402 Duo-Lever™ Corkscrew, Metallic Finish Handle

5405 Duo-Lever™ Corkscrew, All Stainless Steel

Non-stick coated spiral, stainless steel boot lever and serrated blade. Unique capsule cutter. 4-3/4" long.
Pkg. Code: BX, PC

Imprint area across top of handle: 1-3/4" X 5/16". Screen/Pad Print, Laser, Doming and **ColorBlast**



Black 01

Burgundy 03

White 24

Navy Blue 77

Green 13

Red 20

All Stainless

5405 Steel Finish

5402

Metallic
Finish



Metallic Green 13

5 Metallic Colors Available



Metallic
Blue 09

Metallic
Red 20

Metallic
Purple 47

Metallic
Bronze 64

CORKSCREWS

DUO-LEVER™ *new!*

Elixir Multi-Color Spiral Corkscrews

5412

5412 Duo-Lever™ Elixir Corkscrew with Multi-Color Spiral

This attractive new line is essentially our 5400 Duo-Lever™ Corkscrew with black handles only and various multi-color non-stick spirals. Stainless steel boot lever and serrated blade. 4-3/4" long. Spiral colors: Crimson, Tangerine, Emerald, Lime, Dark Aqua, Light Teal, Violet and Fuchsia. Pkg. Code: BX, PC. Imprint area: 1-3/4" X 5/16". Screen/Pad Print or Laser.



Matte Black Finish

8 Colored Worms Available!



5412
Crimson 20



5412
Tangerine 43



5412
Emerald 13



5412
Lime 16



5412
Dark Aqua 09



5412
Light Teal 10



5412
Violet 47



5412
Fuchsia 38

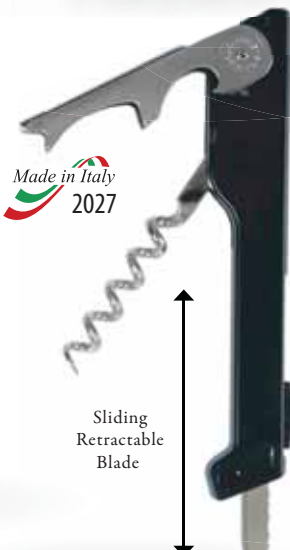
ITALIAN Waiter's Corkscrews

Made in Italy
2025



Nickel Plated!

Made in Italy
2027



Sliding
Retractable
Blade

Made in Italy
2032



Made in Italy
2033



2025 Waiter's Nickel Plated Corkscrew With Serrated Blade

A traditional waiter's corkscrew. 4-5/16" long. Pkg. Code: BU, C. Imprint area: 2-3/4" X 5/16". Screen/Pad Print or Metal Laser.

2027 Slide-Blade "Two-Step" Waiter's Corkscrew

Two-Step lever with sliding knife blade activated by thumb button at top. Spring-loaded floating axis at the boot lever. 5-1/8" long. Black Only. Pkg. Code: BU.

Imprint area: 2-3/4" X 5/16". Hot Stamp/Pad Print

2032 Genesis™ Waiter's Corkscrew

Floating axis design. Includes a tempered two-wheel foil capsule cutter, instead of a knife blade. 5-1/8" long. Black, Burgundy, and White. Pkg. Code: BU, C, PC. Imprint area: 2-3/4" X 5/16". Hot Stamp

2033 Barracuda "Two-Step" Waiter's Corkscrew

The secret is the "crescent" in the handle that keeps the spring loaded floating axis in a vertical position. 5-3/8" long. Black and White. Pkg. Code: BU. Imprint area: 2-1/2" X 1/4". Screen/Pad Print.

ADV. 4
Price List

WHL. 4
Price List

Floating Axis Boot Lever Design!

Made in Italy
HUGGER™
Waiter's Corkscrew



Colors Available



Floating axis**

The patented floating axis relieves stress so the boot lever "hugs" against the cork during extraction.

2029 Hugger™ Waiter's Corkscrew, Nickel Plated

All metal, nickel plated. Patented floating axis design. 5-1/8" long. Non-Serrated blade. Made in Italy. Pkg. Code: BU, C, PC.

Imprint area: 2-3/4" X 5/16". Pad Print or Metal Laser.

2030 Hugger™ Waiter's Corkscrew ABS Plastic Handle (6 Colors)

2030T Hugger™ Waiter's Corkscrew, Non-Stick Spiral

Floating axis design. 5-1/8" long. Serrated blade. Non-Stick spiral available for black handle only.

Pkg. Code: BU, C, PC.

Imprint area: 2-3/4" X 5/16". Hot Stamp/Pad Print.

ColorBlast Imprint area: 2-3/4" X 5/16".

Made in Italy
HUGGER™

Designer Collection Waiter's Corkscrews



2026 Hugger™ Waiter's Corkscrew Designer Collection

Thanks to a special Italian overall decal sublimation, lamination process, these eight attractive designs are a dressy alternative look for the Hugger. Non-stick coated spirals available on models shown above. 5-1/8" long. Pkg. Code*: BU, PC, BX (w/90-0130)

90-0310 Deluxe Box For Waiter's Corkscrews

Clear plastic box with white EVA foam insert and rack hang tag. Fits all waiter's corkscrews not exceeding 5-1/4" in length. By adjusting boot lever position the corkscrew can be locked into position within the box cavity. 6-1/2" x 2-1/2" x 7/8" deep. Pkg. Code: BX.

Imprint area: 2" x 1". Screen/Pad Print. ColorBlast : 2" x 1".

90-0310



CORKSCREWS



White 24



Made in Spain

Pullparrot™

5125 Pullparrot™ Waiter's Corkscrew - Made in Spain

Double-lever system. First lever is hinged and spring-loaded. Black, Burgundy, Blue, and White. 4-7/8" long. Non-stick spiral. Serrated knife blade. Contoured steel handle. Pkg. Code: BU. Imprint area: 1-3/4" X 5/16". Screen/Pad Print or Laser across the top of handle.

Burgundy
03Blue
09Black
01

5125

Pulltex®

BRUCART CORKSCREW



5160



Made in Spain



Made in Spain

5110 Pulltap's® Extendo Corkscrew

Same unique hinged double lever that has made Pulltap's® famous. With an extendable handle for compact pocket storage (3-3/4" closed; 4-5/8" open). Non-stick spiral. Matte nickel outer handle. Built in cap lifter. Pkg. Code: BXR. Imprint area: 1-1/4" X 1/2" Laser.



Closed



Extended

5110

Handle extends and retracts
for pocket storage.



5160 Brucart® Corkscrew, Chrome-Plated, Deluxe Pack With Leather Pouch

This compact corkscrew is a unique extracting system. Place the unit over the bottle. Turn the entire unit clockwise to insert into the cork. The axis in the center rises to act as an indicator to tell you when the cork is fully inserted. Pull the 2-1/2" lever arm away from the body to activate the eleven-step ratchet and spring-loaded arm to extract the cork. Non-stick coated spiral, stainless steel blade. 2-7/8" high, 1-1/2" wide. Pkg. Code: BXR. Imprint area: opposite side of handle 1" X 5/16" Screen/Pad Print or Laser.

Milano

DOUBLE LEVER

100% Made in Italy

new
3167

New Patented extraction
system by reinforced
double lever



Spiral is hardened
carbon steel.

3167 Milano Waiter's Corkscrew,

New Patented uncorking mechanism by double pivot sliding system. Automated selection movement between first and second lever and no jamming thanks to the gentle rotation movement. Guaranteed vertical extraction of corks up to 50mm in length. All painted metal handle completed by ABS or soft gum insert for a more comfortable handling during uncorking. All components, assembly and packaging are made in Italy. Pkg. Code: BU.

Imprint area: 1-3/4" X 5/16". Laser or Screen

Double-Pivot Sliding System



Burgundy 03



White 24



Dark Blue 05



Dark Green 12

MONZA



new
5126



MONZA

Click-Cut Pullparrot™

5126 Monza Corkscrew, Click-Cut Pullparrot™

The Pullparrot™ corkscrew has been awarded 1st Prize at the Gevrey-Chambertin corkscrew contest in France. Its retractable double lever pulls corks out with little effort in two steps. Great for even the longest corks. 4-7/8" long. Packaged in a clear plastic Pulltex® (7-1/4" x 4-3/4") display box with tab suitable for rack display. Pkg. Code: BXR. Imprint area: 1-3/4" X 5/16". Laser or Screen



New stronger blade
(Click-Kut)

CORKSCREWS

Specialty Italian Corkscrews

Waiter's Corkscrew



3134

3134 Gulliver Double-Step Waiter's Corkscrew, Stainless Steel

Same as #3133 but in stainless steel with black handle inset and non-stick coated spiral. Pkg. Code: BU. Imprint area on handle inset: 1-5/8" x 1/4" Screen/Pad Print. The side of the handle can be laser engraved: 2" x 3/16".



3133

3132 Gulliver Double-Step Waiter's Corkscrew, Special Colors
3133 Gulliver Double-Step Waiter's Corkscrew (All Black)

This innovative corkscrew has a unique 1-1/8" extender arm attached to the handle. Hinged to that arm is a one-piece, double-step lever. 3132 Black with White or Burgundy handle inset. Cap lifter in extender arm, Nickel plated spiral. Serrated knife blade. 4-3/4" long. Pkg. Code: BU, C, PC. Imprint area on handle inset: 1-5/8" x 1/4" Screen/Pad Print.



3132

Burgundy 03

3132

White 24



2005

Black 01

Burgundy 03

White 24



Bottle Opener

Foil
Cutter

3265

See video on The Revolutionary
Oblique In action at:
[http://vimeo.com/franmara/
224974511](http://vimeo.com/franmara/224974511)

2005 Oblique™ Waiter's Corkscrew

The angle of the spiral of 13° makes a world of a difference. 5-3/8" long. Colors: Black, Burgundy, and White. Pkg. Code: BU (indiv. white box), BXR (printed box w/hanger tab), PC Imprint area 2" x 5/16" Pad Print.



Free Display with
12 each printed
Box Purchase

3265 Gear Action Waiter's Corkscrew

Foil cutting wheels and Bottle cap lifter. The extracting leverage is greatly increased by the double-gear engagement between the body and the boot lever. Soft-touch handle. Black only. 5" long. Pkg. Code: BX. Imprint area: 2" x 5/16". Laser

PullPlus™

Waiter's Corkscrew

Rosé Wine 37



5303

5304

**Two-Step Lever
Non-Stick
Spiral**

**5304 PullPlus™ Vintage Waiter's
Corkscrew, All Black**

Pkg. Code: BX, C, PC.
Wide imprint area across top:
3/8" high x 2" long. Laser or Screen/Pad Print.

Red Wine 21 White Wine 26

5303 PullPlus™ Domaine Corkscrew, Translucent

Pkg. Code: BX, C, PC.
Wide imprint area across top: 3/8" high x 2" long. Laser or Screen/Pad Print.

PullPlus™ Waiter's Corkscrew

5301 PullPlus™ Waiter's Corkscrew, Enameled Steel Handle

5302 PullPlus™ Vintage Waiter's Corkscrew, Stainless Steel

All-in-one two-step boot lever. First step in boot lever extracts cork about 3/4". Second step extracts the rest of the way out. Strong enameled steel handle (except 5303). Stainless knife blade.

Non-stick coating on spiral. 5-1/8" long.

Pkg. Code: BX, C, PC.

Wide imprint area across top: 3/8" high x 2" long.
Laser or Screen/Pad Print.

***Specialty Packaging for Waiter's Corkscrews -**

See pages 46-48.



5306

5305

Blue 09

Green 13

Red 20

Silver 67

**5306 PullPlus™ Vintage Soft
-Touch Waiter's Corkscrew
Matte, rubberized surface
coat on handle.**

Pkg. Code: BX, C, PC.
Wide imprint area across top:
3/8" high x 2" long. Laser or
Screen/Pad Print

**5305 PullPlus™ Vintage Waiter's
Corkscrew, Metallized Handle**

Pkg. Code: BX, C, PC.
Wide imprint area across top:
3/8" high x 2" long. Laser or Screen/Pad Print.



5301

5302

Burgundy 03

Black 01

Stainless Steel

**Two-Step
Lever**



5200N

5200

**Ratchet
Corkscrew**

5200



Made in Spain



Black 01

Brushed Nickel Burgundy 03

Puigpull® Waiter's Corkscrew

5200 Puigpull® Corkscrew With Enameled Handle, Made in Spain

5200N Puigpull® Corkscrew With Brushed Nickel Handle

Works like a car jack. Foil cutter and non-stick coated spiral.

5" long. Pkg. Code: BXR.

Imprint area: 2-1/2" X 1/4". Screen/Pad Print or Laser across the top of handle.



CORKSCREWS



Prestigio™

Waiter's Corkscrew

3185 Prestigio™ Waiter's Corkscrew, Anodized Colors

3185K Prestigio™ Waiter's Corkscrew With Natural Aluminum Handle With Non-Stick Worm

Nicely balanced. Smooth satin finish. Stainless boot lever and serrated blade. Unibody aluminum handle.

5" long. Pkg. Code: BU, BX.

Imprint area on side: 2-1/4" X 5/16." Laser.

Decorate Any Corkscrew

With Your Logo On It!



Grenouille™

Waiter's Corkscrew



3270
White 24

3270
White 24
With four color
decal

3270 Grenouille™ Waiter's Corkscrew

Large curved handle with built-in rubber thumb stop. A large circular space on the corkscrew is designed to prominently show your logo. Serrated blade. 5-3/8" overall.

Colors: Burgundy, White and Green

Pkg. Code: BU.

Imprint area: 1" dia four color digital process

3120 Vintage Waiter's Corkscrew

Stainless steel finely crafted by a quality Italian knife manufacturer. Completely cut by laser. Its unusual ergonomic handle gives the user a good grip while extracting corks. Sharp serrated blade. Grooved, filet spiral. 5" long, 1-7/8" wide. Pkg.

Code: BX. Imprint area: 1"-3/16". Metal Laser.

3128 Deluc Waiter's Corkscrew

Deluxe stainless steel waiter's corkscrew with non-stick coated spiral. Extra-long (2") finely serrated blade. 4-1/2" long.

Pkg. Code: BX. Imprint area: 2"-3/16". Metal laser.



3120



3128



3185



Dark Green 12

3185K
Aluminum



Burgundy 03



Dark Blue 05

3270

Burgundy 03



3270
Green 12
With four color
decal

CORKBOSS™

WAITER'S CORKSCREW

**BIGGEST
INNOVATION**
IN WAITER'S CORKSCREWS
IN 30 YEARS!



**Strong Aluminum Body,
Other Parts Are Stainless Steel.**

3115 Cork Boss™ Waiter's Corkscrew

Here's the latest innovation in a waiter's corkscrew: Cork Boss™. It makes insertion into the cork very fast and easy. It quickly removes the cork from the spiral afterwards. The most time consuming exercise with a waiter-type corkscrew is inserting the spiral into the cork. Now it's rapid and easy. Strong aluminum body, other parts are stainless steel. Patent Pending. 5-3/8" long, 5/8" wide.

Pkg. Code: BXR Imprint area: 2" X 5/16". Laser Engraved.

new
3115

**THE ROTO HANDLE
SOMMELIER'S NEW BEST FRIEND!**



IMPORTANT PHYSICAL ADVANTAGE OF THE CORK BOSS™

**Perfect for individuals who have
limited strength with their hands.**

For waiters or sommeliers opening 20 to 40 bottles in an evening. Cork Boss™ transfers the twisting torque of the wrist away to the operator's hand, arm and shoulder. This can alleviate wrist pain, inflammation and possibly even carpal tunnel syndrome.

**The Roto handle's easy-turn
metal sleeve makes it effortless
to insert the spiral into the cork.**

**Avoid Wrist-Pain and
possibly even Carpal Tunnel!**



Instructions on how to use:

- Step 1.** Insert one-turn of the spiral into cork. Lift Roto handle.
- Step 2.** Turn the Cork Boss™ clockwise using only the Roto handle until the spiral is inserted into the cork. Leaving a half turn exposed of the spiral.
- Step 3.** Fold down the Roto handle and extract the cork with the two-step lever.
- Step 4.** When finished, lift up the Roto handle, grip the cork in your hand and spin it off the spiral.

INVENTOR

BARBARA MARONEY
A CERTIFIED SOMMELIER

WHL. 5
Price List

ADV. 5
Price List

Packaging Code: BU=Factory Bulk Packed BX=Factory Boxed BXR=Retail Boxed C=Regular Carded PC=Premium Carded

CORKSCREWS

25

ASI 55450

Traditional

Waiter's Corkscrews

Beautiful And Practical

3199



3199 Curved Stainless Steel Corkscrew

4-1/4" long. Pkg. Code: PC, BX

Imprint area on side: 2" X 3/16". Screen/Pad Print or Metal Laser.

3195



3195 Curved Nickel Plated Corkscrew With Black Plastic Handle

4-1/4" long. Pkg. Code: BX, PC.

Imprint area on boot: 1-1/4" X 1/4" metal laser. On side 2" X 3/16" Screen/Pad Print.

2038



2038 Crescent™ Waiter's Corkscrew

Nickel plated knife. 5" long. Black. Pkg. Code: BU.

Imprint area: 2-3/4" X 5/16". Screen/Pad Print. Logo may need to be curved, depending on length.

3189



3189 Straight Brushed Stainless Steel Corkscrew

Equipped with 5-turn spiral. 4-11/16" long.

Pkg. Code: PC, BX

Imprint area on side: 2" X 3/16". Screen/Pad Print or Metal Laser.

3198 Dauphine Corkscrew

Metal alloy body. Serrated blade with small knob attached for easy lifting. Gold or Black. Non-stick coated spirals, 4-1/2" long.

Pkg. Code: PC, BX Imprint area on side: 2" X 1/4". Screen/Pad Print or Metal Laser.

2018 Wine Steward's Corkscrew

European style corkscrew with deluxe cap-lifter built into the handle. 5-7/8" long. Colors: Black and Burgundy.

Pkg. Code: BU, C, PC.

Imprint area: 2-3/4" X 5/16". Hot Stamp or Screen/Pad Print.

5315



Black 01

new new new new

Burgundy
03Metallic
Red 20Purple
47White
24

5315 Innovation Corkscrew - French Designed

Stainless steel serrated blade. Non-stick coated spiral.

4-3/4" long. Pkg. Code: BX.

Imprint area: 1-1/2" X 5/16". Screen/Pad Print or Laser

See page 28 for 5318 Innovation Deluxe Version with Rosewood handle.

3198

Black 01



Gold 68

2018



Black 01

2018



Burgundy 03

• European Style

• Foil Cutter.

• Grooved corkscrew.

• Bottle cap opener.

new!
Improved
Design

Two Packaging Options for Laguioles:



Box Sleeve

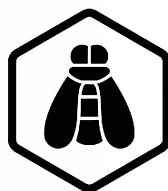
1. (SET) Slide Wood Box for
3400SET-3405SET

3403SET



2. Standard Box
option for 3400-3405

3402



LAGUIOLE

Luxury Waiter's Corkscrew

Stainless steel with wood insert handle. Stainless steel worm with file for easier insertion into the cork. 4-1/2" long. Boxed version includes a wood slide box. Add the word SET to the end of the part number, to receive the wood box set with sleeve. Pkg Code: BX. Imprint area on boot lever 1" x 3/8". Laser. On side of wood box, 3" x 1-1/4". Laser or Pad Print on Box Lid Only *ColorBlast* 3" x 1-1/4". Box Lid Only.

All Made of Real Wood!



Michelangelo

Waiter's Corkscrew Set

These precision-made corkscrews require 160 hand detailing steps to complete. Double curved design. Hefty, but balanced, weight makes extraction both smooth and easy with fine serrated blade. Satin finish stainless steel parts include heavy bolsters on both sides of the center wood inset, 2" serrated blade, wide boot lever and 5-turn spiral. 5-3/4" L, 1/2" W. Wood box included. Pkg. Code: BX. Imprint area on box: 4" X 2". 1" x 1/4" on boot lever. Laser.

3289SET Michelangelo Waiter's Corkscrew With Bamboo Handle. Each in a Wood Box.

3290SET Michelangelo Waiter's Corkscrew With Beechwood Handle. Each in a Wood Box.

3291SET Michelangelo Waiter's Corkscrew With Rosewood Handle. Each In a Wood Box.



CORKSCREWS

WOOD HANDLE

Waiter's Corkscrews



Environmentally
Green Bamboo
Inset!

Serrated
Blade

Bamboo

Burgundy
Wood

Dark
Wood

3192 Curved Stainless Steel Corkscrew With Dark Wood Inset

Sleek design with bolsters on each side of handle. 4-1/4" long.
Pkg. Code: BX, PC. Imprint area: 1-1/2" X 1/2" on boot lever only, Metal laser.

3194 Curved Stainless Steel Corkscrew W/"Environmentally Green" Bamboo Inset

Compact serrated blade, metal bolsters. 4-1/4" long. Pkg. Code: BX, PC.
Imprint area: 1-1/2" X 1/2" on boot lever only, Metal laser.

3196 Curved Stainless Corkscrew With Burgundy Wood Inset

Handy, compact. Metal bolsters. 4-1/4" long. Pkg. Code: BX, PC.
Imprint area: 1-1/2" X 1/2" on boot lever only, Metal laser.



Smart and Functional Design!



3197

5318

Rosewood

Rosewood

3193

Brown
Wood

3193 Straight Stainless Steel Corkscrew With Brown Wood Inset

Compact with serrated blade, shiny bolsters. 4-3/8" long. Pkg. Code: BX.

Imprint area: 1-1/2" X 1/2" on boot lever only, Metal laser.

3197 Straight Stainless Corkscrew With Rosewood Color Wood Inset

Blade located above, metal bolsters. 4-1/4" long. Pkg. Code: BX.

Imprint area: 1-1/2" X 1/2" on boot lever only, Metal laser.

5318 Innovation Deluxe Corkscrew Rosewood Handle

This two-step corkscrew has a unique activating system for the first lever. After inserting the spiral into the cork push the upper lever (marked PUSH) inward over the bottle rim, partially extract and then activate the second lever. Stainless steel with rosewood riveted handle. 4-7/8" long. 4-3/4" long. Pkg. Code: BX.

Imprint area on wood body: 1-1/4" x 3/8". Laser.

See page 26 for 5315 Innovation Original Version with Plastic handle.

Laser Engrave Any Of These Corkscrews

With Your Logo On It!

Donatello

Waiter's Corkscrews



3287 Donatello Waiter's Corkscrew, Ebony Handle

3287SET Donatello Waiter's Corkscrew, Ebony Handle, in Pine Wood Box

3288SET Donatello Waiter's Corkscrew, Rosewood Handle, in Rosewood Wood Box

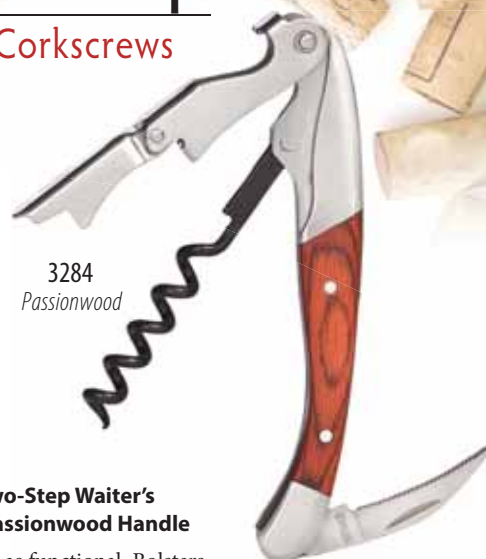
A double-lever that neatly conforms to the curved configuration of the corkscrew. Substantial 3/8" thick body. The ebony wood and Rosewood handle inset compliments this stainless steel bolsters with a fine serrated knife blade. Each corkscrew is packed in an elegant wood boxes with custom insets. 4-3/4" long. Dimensions of Box: 7-3/8" x 3" x 10-1/2". Pkg Code: BX.

Imprint area on boot lever 3/4" x 1/4". Laser. On wood box, 4" x 2". Laser

ColorBlast Imprint area on wood box only: 4" x 2".

Titan Two-Step

Waiter's Corkscrews



3284 Titan Two-Step Waiter's Corkscrew, Passionwood Handle

Elegant as well as functional. Bolsters, two-step boot lever and knife blade are all fashioned of stainless steel around a Passionwood handle. Non-stick coated spiral. 4-3/4" long. Pkg. Code: BX.

Imprint on boot lever: 3/4" x 3/16". Metal Laser.

Makes cork removal easy!



3285
Passionwood



3286
Rosewood

3285 Barkeeper's Two-Lever Corkscrew, Passionwood Handle

A 2-lever corkscrew with a particularly wide (3/8") cap lifter mounted at the end makes this a bartender favorite. All stainless with inlaid passionwood inset. Unique cut out opening makes blade opening easier. 4-7/8" long. Pkg. Code: BX.

Imprint area on lower boot lever: 3/4" X 3/16". Metal Laser.

3286 Bellini Waiter's Corkscrew with Double Lever

Polished stainless steel with rosewood insert in handle. Fine serrated blade. 4-1/2" long overall. Pkg. Code: BX, PC.

Imprint area on lower boot lever: 3/4" X 1/4". Metal Laser.



new
3410
Olivewood

3410 Olea Olivewood Handle Double Lever Corkscrew

An elegant olivewood handle corkscrew with stainless steel parts. 5" long overall. Pkg. Code: BX, PC.

Imprint area on lower boot lever: 3/4" X 1/4". Metal Laser.

Easy-Pull™

Waiter's Corkscrew



5310

Blue 09

Laser Engraved Sample



Burgundy 03

Red 20

Gray 70

Green 13

5310 Easy-Pull™ Waiter's Corkscrew

All-in-one two-step boot lever. Non-stick coating on spiral. Strong stylized two color handle rimmed in black with internal colors of Blue, Burgundy, Red, Gray, or Green. 4-3/4" long. Pkg. Code: BX, PC.
Imprint area: 2-1/2" X 5/16". Laser.

3250 Archimedes™ Waiter's Corkscrews

An attractive stainless steel corkscrew with external aluminum plates mounted to the handle. Unique extended tab makes knife blade opening easy. Anodized silver or anodized black body color. 4-7/8" long. Pkg. Code: BX.
Imprint area: 2-1/2" X 1/4".

2008 EasyPro™ Waiter's Corkscrew

The EasyPro™ two-step waiter's corkscrew presents new features. An easy-to-use tool. Pull the double-lever away from the body and the spiral itself raises up to the vertical position automatically, ready for use. The elongated *super* spiral has an indented filet line for easier insertion. The first lever pulls the cork partially. An extra-long second lever avoids slippage and allows more finger pressure against the bottle rim. The curved handle adds leverage. 4-3/8" long. Colors: Black or Burgundy. Pkg. Code: BU, PC.

Imprint area: 2-1/2" X 1/4". Screen/Pad print. *ColorBlast* Imprint area: 2-1/2" x 1/4".

Archimedes™

Waiter's Corkscrew



3250

Black 01

Silver 67

Easy-Pro™

Waiter's Corkscrew



2008

Burgundy 03

- Italian-Design
- Spiral opens automatically when double-lever is pulled
- Extra-long lever avoids slippage



2008
Black 01

Patent Pending

CASTELLO™

Made in Italy

Waiter's Corkscrews

3148



Castello Silver Standard Gift Box

The Castello™ Collection of Two-Step Waiter's Corkscrews is handcrafted in Italy. All metal parts are stainless steel. All the Castello™ Waiter's Corkscrews are made in the cutlery capital of Italy.



3149SET



Two Packaging Options:



Standard Box Option for 3140-3156:
Castello™ Silver Gift Box included with every corkscrew. Pkg. Code: BX.



3140

3141SET

3142

3143SET

3144

3145SET



Italian Olive Wood Handle



Santos Mahogany Handle



Real Buffalo Horn Handle



Made in Italy

(SET) Wood Box and Pouch Options for 3141SET-3157SET:

Wood Box and leather pouch are available with all Castello™ Corkscrews when ordering the sets. The presentation set option for the seven Castello™ waiter's corkscrews are listed with the word "SET" after the number. Leather pouch has a belt loop (Measures: 4-7/8" x 2-1/4"). Partitioned wood box has a clear acrylic sliding top. Box measures 6-1/2" x 4-1/4" x 1-3/4". Pkg. Code: BX.

Imprinting Options:

Imprint on boot lever 1" x 5/16". Metal Laser.
Imprint area on lid of box: 3" X 2" Pad Print/ ColorBlast;
On short side of box: 2" X 1"; on long side of box: 4" X 1". Laser.

new

new

3148

3149SET

3152

3153SET

3156

3157SET

3146

3147SET



Carbon Fiber Handle



Black Aluminum Handle



Bronze Aluminum Handle



Natural Aluminum Handle

LAGUIOLE *Millésime*®

100% Made in France

3344 Genuine French
Oak Handle

3338
Red Marble Acrylic
Handle

Introducing Eleven Exquisite Models of the Laguiole Millésime Corkscrew, Hand-Crafted in France

All Millésime Corkscrew models below have ABS or acrylic handles.
All Laguiole Millésime Corkscrews measure: 4-3/4" long. They come with a stainless steel corkscrew, caps, boot lever and foil cutter.

Imprinting and packaging options available see page 33.

3330 / 3331SET



Black Horn ABS
Handle

3334 / 3335SET



White Horn ABS
Handle

3332 / 3333SET



Blonde Horn ABS
Handle

3328 / 3329SET



Silver Metallic ABS
Handle

3338 / 3339SET



Red Marble Acrylic
Handle

3336 / 3337SET



Wood Effect ABS
Handle

(SET) Wood Box
and Pouch



LAGUIOLE *Millésime*®

Two Packaging Options:

(SET) Wood Box and Pouch Option for
3331SET-3353SET

Wood Box and leather pouch are available with all Millésime Corkscrews when ordering the sets. The presentation set option for the eleven Millésime waiter's corkscrews are listed with the word "SET" after the number. Leather pouch has a belt loop (Measures: 4-7/8" x 2-1/4"). Partitioned wood box has a clear acrylic sliding top. Box measures 6-1/2" x 4-1/4" x 1-3/4". Pkg. Code: BX.

Imprinting available on box and corkscrew (see below)

Standard Kraft Gift Box Option for 3330-3352

All Eleven Millésime Corkscrews come with a closing natural Kraft gift box when ordering just the corkscrew alone. Pkg. Code: BX.

All Millésime Corkscrew models on this page have genuine, natural material handles.
All Laguiole Millésime Corkscrews measure: 4-3/4" long. They come with a Stainless Steel corkscrew, caps, boot lever and foil cutter.



Standard
Kraft Gift Box

3352 / 3353SET



Genuine Buffalo
Horn Handle

3344 / 3345SET



Genuine French
Oak Handle

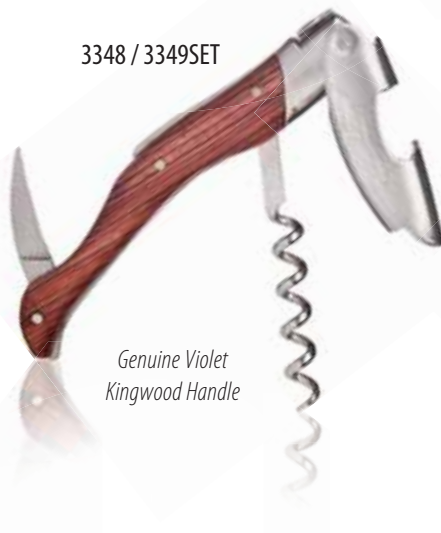
3346 / 3347SET



Genuine Olive
Wood Handle

3344 with Diamond
Drag Engraving

3348 / 3349SET



Genuine Violet
Kingwood Handle

3350 / 3351SET



Genuine Stag
Horn Handle

Imprinting Options:

Imprint on side of boot lever 1-3/4" x 1/2".
Laser or Diamond Drag

Imprint area on lid of box: 3" X 2" Pad Print/ ColorBlast;
On short side of box: 2" X 1"; on long side of box: 4" X 1". Laser.



CORKSCREWS

All Laguiole en Aubrac Corkscrews Are Packed
In A French Oak Box.



Made in France

new



3310

new



3386

Premier Laguiole En Aubrac French Sommelier's Corkscrews

Each corkscrew is assembled entirely by hand and signature marked by the same master craftsman. Made in the Laguiole area of France, in the pure Laguiole tradition. Finely serrated blade and bottle opener combination. Cone-shaped file worm gradually tapers from 3.8 mm down to a fine point at the tip for a truly positive grip of the cork. Smoothly arched boot lever rests lightly on the bottle rim. 4-3/4" long. Each in a natural French Oak wood box. (6" L x 2-1/2" W x 1-1/2" deep). Pkg. Code: BX.

The Laguiole en Aubrac corkscrews signify a true holdover of traditional Laguiole, France fine craftsmanship. Artfully crafted and assembled by hand, each corkscrew embodies a particular theme invented by the creators. Truly the ultimate keepsake for the wine lover.

Imprinting Options:

Imprint on boot lever 1-3/4" x 1/2".
Laser or Diamond Drag

Imprint area on lid of box: 1-3/4" X 1-3/4" Laser

3297



Blue Sycamore Wood
Handle

3299



Green Malachite
Handle

new

3310



Turquoise
Handle

3301



Olive Wood
Handle

3305



Juniper Wood
Handle

new

3311



Grapevine
Handle

See Video on the Crafting of the Laguiole en Aubrac in France!

<http://vimeo.com/62283243>

ADV. 8
Price List

WHL. 7-8
Price List

3302



Buffalo Horn (from Africa)
Handle

3303



Brown Horn (from Italian Buffalo)
Handle

3385



Polished Stainless Steel
Handle

new

3386



Brushed Stainless Steel
Handle



Made in France

As the natural Buffalo horn used for these handles varies in color and tone, there may be some dramatic differences from corkscrew to corkscrew. Since this is the unique nature of this material, these variations should be considered normal.

All Laguiole en Aubrac Corkscrews Are Packed In A French Oak Box.

White flower with genuine
diamond at center

3309



Diamond Flower
Handle

3300



Ebony and Ivory inlaid
Handle

3382



Silver Texalium Inlay
Handle



Commemorating the 100th
Anniversary of the
Golden Gate Bridge in San Francisco, CA

3304



Polished Steel
Handle
(Limited Edition)

3306



Red Enamel
Handle
(actual color of bridge)

This limited edition

French-made corkscrew is made of steel purchased
from the Golden Gate Bridge Highway & Transportation District
from the bridge of the same name. 5-1/4" long. Pkg. Code: BX (tube).

Imprinting Options:

Imprint on boot lever 1-3/4" x 1/2".
Laser or Diamond Drag

Imprint area on lid of box: 1-3/4" X 1-3/4" Laser

CORKSCREWS

35

ASI 55450



Made in France



Château[®] LAGUIOLE

The most prestigious corkscrew in the world, this exquisite professional corkscrew line continues to grow in popularity. Each corkscrew is elegantly designed to include:

- A long, forged knife blade
- A smooth, rounded boot lever
- A long spiral

Each comes boxed in its own custom leather pouch except for 3225 (black rubberized box). 4-1/2" long. Pkg. Code: BX.



Black Horn Handle



Brown Horn Handle

Each Chateau Laguiole[®] waiter's corkscrew is meticulously handcrafted to perfection in Thiers, France.

Imprint area on boot lever: 1" X 1/4". Laser Engraving Personalization also available. Please inquire.

Diamond Drag Engraving available on request

Imprint area on boot lever: 1" x 1/4"



Oak Barrel Handle - The oak comes from wine barrels in Margaux, France



Non-Stick Worm

Olive Wood Handle

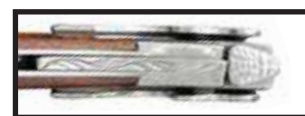


Non-Stick Worm

Stainless Steel Handle



Etched "bee" emblem (Napoleon's symbol representing industry, efficiency and productivity), ensures that each piece is a genuine Chateau Laguiole[®]



Non-Stick Worm

Maple Wood Handle

Special Edition

Plated with Genuine Silver



All Silver Plated Corkscrew



Non-Stick Worm

Snake Wood Handle

3208 Chateau Laguiole®, Markus Del Monego (Grand Cru Style)

Markus Del Monego (German) elected Best Sommelier of the World 1998. Handle in Vine wood. Boxed. Imprint area: 1-1/2" x 5/16". Laser.

3212 Chateau Laguiole®, Andreas Larsson

Andreas Larsson (Swedish) chosen Best Sommelier of the World 2007. Handle in Reindeer wood. Boxed. No imprint available.

3224 Chateau Laguiole®, Shinya Tasaki

With red and white handle. Lever embossed in honor of Shinya Tasaki, renowned Japanese sommelier voted Best Sommelier of the World, 1995. Comes in signed leather pouch. Handle in Rosewood and White Corian. Boxed. No imprint available.

3231 Chateau Laguiole®, Giuseppe Vaccarini

Giuseppe Vaccarini, is an Italian sommelier, winner of the Best Sommelier of the World A.S.I. 1978 competition and President for two mandates, from 1996 to 2004, of the Association de la Sommellerie Internationale. Handle in Lemon wood. Boxed. Imprint area: 1-1/2" x 5/16". Laser.

3232 Chateau Laguiole®, Serge Dubs

Serge Dubs selected Master Sommelier of the Union of French Sommelier in 1989. Handle in Palissander wood. Boxed. Imprint area: 1-1/2" x 5/16". Laser.

3236 Chateau Laguiole®, Gerard Basset (Grand Cru Style)

Gerard Basset (French) won Best Sommelier of the World 2010. Handle in Red Stamina wood. Boxed. No imprint available.

The Best Sommelier in the world competition is organized by the Association de la Sommellerie Internationale, a non-profit organization headquartered in Paris. Competition takes place every three years. At least 50 contestants compete. The finalists have to survive demanding practical tests to take the title. This includes a complete series of timed tasks including blind tastings and describing in detail those wines, and identifying eight spirits in three minutes.

3237 Chateau Laguiole®, Eric Beaumard (Grand Cru Style)

With carbon fiber handle, matte finish. Leather embossed in honor of Eric Beaumard, Best Sommelier of the World, 1998, 2nd place. Comes in signed black and gray leather pouch. Boxed. Imprint area: 1-1/2" x 5/16". Laser.

3238 Chateau Laguiole®, Olivier Poussier

Yew tree wood from Versailles. Olivier Poussier, Best Sommelier of the World, 2000, model. Limited edition. Boxed. Imprint area: 1-1/2" x 5/16". Laser.

3239 Chateau Laguiole®, Enrico Bernardo

Leather embossed in honor of Eric Bernardo, Best Sommelier of the World, 2004. Handle in Black Lacquer and Gold Plated Inlays. Boxed. Imprint area: 1-1/2" x 5/16". Laser.

Not Shown, See page 42.

3209 Laguiole® Tradition, Arvid Rosengren

Two-Lever Waiter's Corkscrew

Curly birchwood handle with leather pouch. Embossed in honor of Swede Arvid Rosengren, 2016 Best Sommelier in the World award. Boxed.

Château® LAGUIOLE



Made in France



CORKSCREWS



Made in France

Château® LAGUIOLE

The elegant Grand Cru design features longer stainless steel bolsters.

Each Chateau Laguiole® waiter's corkscrew is meticulously handcrafted to perfection in Thiers, France.

Imprint area on boot lever: 1-3/4" X 5/16". Laser or Diamond Drag
Personalization also available. Please inquire. Pkg. Code: BX.



3230

Red Stamina Wood
Handle



3233

Green Stamina Wood
Handle



3234

Birch Wood
Handle

Handcrafted to Perfection.



3235

Ram Horn Handle



3241

Ebony Handle



3242

Olive wood Handle

Le Thiers™

Sommelier Corkscrews

3292 Le Thiers™ Sommelier Corkscrew, Oak Handle With Leather Holster

3293 Le Thiers™ Sommelier Corkscrew, All Stainless Steel With Leather Holster

This high quality corkscrew is handmade in Thiers, France, and designed by an award-winning sommelier. Especially designed for heavy use. 6-1/4" long. Comes with black leather belt holster. Pkg. Code: BU.

Imprint area: 1" x 5/16". Laser.

Made in France
3292

Made in France
3293

Oak Handle

Stainless Steel Handle

Le Thiers™ Black Leather Belt Holster

3260 Le Sable French Waiter's Corkscrew

This handcrafted waiter's corkscrew makes drawing long corks easier. An innovative kinematics principle patented by J. Lefebvre (a French vintner) progressively ratchets up three times within the boot lever for a perfect, vertical extraction. 5-1/4" long. Includes leather pouch and a wood box. Pkg. Code: BX.

Imprint area: 1-1/4" X 3/16" high. Metal Laser.

Made in France
3260

Three-Step Corkscrew

3268 Winner Waiter's Corkscrew

This French-made corkscrew has a unique, angled knife blade. It forms a "wedge" that neatly slices off bottle-top foils. spiral. 5-1/8" long. Black only.

Pkg. Code: BU. Imprint 2-1/2" long X 5/16" high. Screen/Pad Print.

Made in France
3268

Innovative Foil Cutter

La Vigne French

Waiter's Corkscrews

Made in France
3294

Made in France
3295

Made in France
3296

Cabernet Sauvignon Handle

Merlot Handle

Chardonnay Handle

La Vigne French Corkscrew – Made in France

A premium, handmade French corkscrew. Satin finish stainless steel. Handles are made of actual vine stock with stainless bolsters on each end. Three varietals: Cabernet Sauvignon, Merlot and Chardonnay. Vine names are inscribed on top opposite the micro-serrated knife blade. Long, efficient spiral. Cap lifter on boot lever. Grape name embossed on the holster. 4-7/8" long. Pkg. Code: BX. Imprint area on boot lever: 1" X 5/16". Metal Laser.

Laguiole

Tradition®

Two-Lever Corkscrews

new!



Made in France

Each handcrafted Laguiole Tradition® two-lever corkscrew comes with a uniquely executed handle. Choose from 25 different handles. All Laguiole Tradition® Corkscrews are 4-1/2 in length. Each packed in a black gift box with a genuine leather pouch. Pkg. Code: BX.
Imprint area for all Laguiole Tradition® Corkscrews. 1" x 5/16" Laser

The new elegant Tradition® design features longer stainless steel bolsters and a two lever system.

It comes from the talented French producers of Chateau Laguiole® and Le Thiers® corkscrews and is produced in their factory Vauzy-Chassangue.

Handcrafted to Perfection.



3435

Amourette Wood Handle
Amourette is a Snakewood from tropical South America

3436



Ebony Wood Handle

3437



Maple Wood Handle

3438



Olive Wood Handle

3439



Pallsander Wood Handle
Pallsander is Nicaraguan Rosewood

All corkscrews come with a genuine leather pouch.



3440

Rosewood Wood Handle

3441



Oak Wood Handle

3442



Juniper Wood Handle

3443



Box Wood Handle

3444



Heath Wood Handle

All Plexi handles are made of a translucent thermoplastic.



White Plexi Handle



Ivory Plexi Handle



Black with Pearl
Plexi Handle



Black with Lines
Plexi Handle

Laguiole Tradition®

3455



Made in France



Black Plexi Handle

3453



Blue Stamina Handle

3452



Green Stamina Handle

3451



Natural Stamina Handle

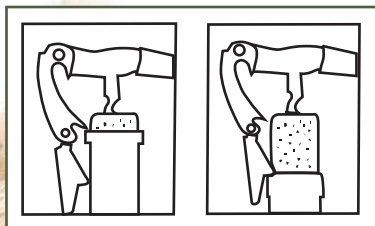
All Stamina Wood handles are made of dyed wood veneer laminate impregnated with resin.

All corkscrews come with a genuine leather pouch.



Red Stamina Handle

Hinged Double-Lever System



A FEW WORDS ABOUT THE TWO-LEVER SYSTEM...

The innovative hinged two-lever lets you easily uncork a wine bottle in two steps. The first lever rests on the bottle rim and lets you partially extract the cork about 3/4" from the bottle. By repositioning the second lever on the rim the final extraction is effortlessly performed.

Imprint area for all Laguiole Tradition® Corkscrews: 1" X 5/16". Laser. Pkg. Code: BX.

3431



Brown Horn Handle

3432



Ram Horn Handle

3430



Black Horn Handle

All Natural Horn colors will vary.

CORKSCREWS

new!

Laguiole
Tradition®
Luxury Selection
Two-Lever Corkscrews

This Mammoth elephant fossil material is recovered in the permafrost around the Artic Circle. Small fractures and material shades give this fascinating material its remarkable color.

It comes from the talented French producers of Chateau Laguiole® and Le Thiers® corkscrews.



3465 Mammoth Fossil Handle

Made in France

Handcrafted to Perfection.



3465



Mammoth Fossil Handle

3469



Gold Plated Handle

3468



Silver Plated Handle

3209



3209 Arvid Rosengren (2016)

Packaging:

Two-Lever Corkscrews

Each corkscrew comes with a leather, magnetic snap closure pouch and packed in a black gift box top stamped with "Vauzy-Chassangue". This is the actual cutlery factory in Thiers, France, founded in 1850, that produces this corkscrew line in conjunction with the Chateau

Laguiole® people. Pkg. Code: BX.

Imprint area for all Laguiole Tradition® Corkscrews: 1" X 5/16". Laser

3209 Laguiole® Tradition, Arvid Rosengren

Curly birchwood handle with leather pouch. Embossed in honor of Swede Arvid Rosengren, 2016 Best Sommelier in the World Award. Limited Edition. Pkg. Code: BX.

Imprint area: 3/4" x 3/4" Laser.





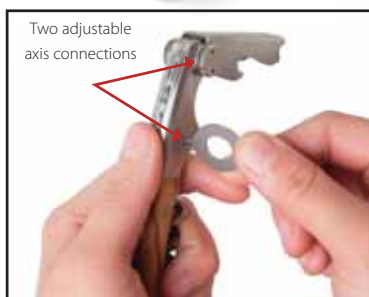
3252

Made in France

CLAUDE DOZORME

Clos Laguirole Waiter's Corkscrews

Presenting three truly unique French corkscrews. Each is equipped with a five-turn, elongated conical spiral, micro-serrated knife blade with fingernail grip and cap lifter. An additional feature that makes these corkscrews special, are the two adjustable axis connections. One at the spiral connection and the other at the boot lever connection. A special two-sided wrench (included) allows you to loosen or tighten the tension needed to open and close the spiral or lever. 5" long. Pkg. Code: BX. Standard black gift box with leather sleeve.



Adjusting tension with two sided wrench.



Spiral Adjustment.



Boot Lever Adjustment.

3252



Black Horn Handle

3254



Juniper Wood Handle

3256



Olive Wood Handle

3253SET



Black Horn Handle

3255SET



Juniper Wood Handle

3257SET



Olive Wood Handle

Two Packaging Options:

Standard Black Box Option

Packaged in a Black Gift Box with adjustment Wrench and a Leather Sleeve (see top of page)

(SET) Wood Box and Pouch Option

Packaged in a Wood Box with adjustment Wrench and Leather Pouch with belt loop. Leather pouch Measures: 4-7/8" x 2-1/4". Partitioned wood box has a clear acrylic sliding top. Box measures 6-1/2" x 4-1/4" x 1-3/4".

Imprinting Options:

Imprint on boot lever 1" x 5/16". Metal Laser. Imprint area on lid of box: 3" X 2" Pad Print/ColorBlast; On short side of box: 2" X 1"; on long side of box: 4" X 1". Laser.



3253SET

Black Horn Handle

CORKSCREWS

1120 - Nickel Plated Clip

Black
01Dark Blue
05Dark Green
12White
24Burgundy
03

1125 - Gold Plated Clip

Black
01Burgundy
03White
24Dark Green
12Dark Blue
05

1127

Brushed
Aluminum

1129

Brushed
Gold Anodized

1131



Stainless Steel

1132

**new**
Chrome Plated
Steel

1133

Gold Plated
Steel

CRUMB SCRAPERS

Restaurant Grade and Quality

1120 Crumb Scraper, Enamel With Nickel Plated Pocket Clip

1125 Crumb Scraper, Enamel With Gold Plated Pocket Clip

Curved aluminum with Nickel or Gold plated pocket clip. 6" long, 5/8" wide. Pkg. Code: BU, PC. Imprint area: 2-3/4" x 5/16". Screen/Pad Print.

1127 Brushed Aluminum Crumb Scraper With Nickel Plated Clip

6" long, 5/8" wide. Pkg. Code: BU, PC. Imprint area: 2-3/4" x 5/16". Screen/Pad Print/Metal Laser.

1129 Brushed Gold Anodized Crumb Scraper With Gold Plated Clip

6" long, 5/8" wide. Pkg. Code: BU, PC. Imprint area: 2-3/4" x 5/16". Screen/Pad Print/Metal Laser.

1131 Stainless Steel Crumb Scraper With Nickel Plated Clip

6" long, 5/8" wide. Pkg. Code: BU, PC. Imprint area: 2-3/4" x 5/16". Metal Laser.

1132 Chrome Plated Crumb Scraper With Nickel Plated Clip

6" long, 5/8" wide. Pkg. Code: BU, PC. Imprint area: 2-3/4" x 5/16". Metal Laser.

1133 Steel Crumb Scraper, Gold Plated With Gold Plated Clip

6" long, 5/8" wide. Pkg. Code: BU, PC. Imprint area: 2-3/4" x 5/16". Metal Laser.



See page 244 for
Tip Tray



SWOOP™
CRUMB SWEEPER

1140 Swoop™ Crumb Sweeper (Three Brushes)

Here is a premium, triple-brush crumb sweeper designed especially for the wait-staff of table cloth restaurants. The body and lid are made of strong plastic. Bristles are mounted on stainless steel spines which makes the Swoop™ completely washable. The silver color top hinges open from the black base to remove accumulated crumbs. Four rubber wheels contact the table to activate two sweeping brushes into the central accumulating brush. A compact 4-7/8" L, 2-7/8" W, 1-3/8" H. Weighs just 4 oz. Pkg. Code: BXR (with hanger tab). Imprint area on silver color top (the print reverses out in black color)

3"x 1-1/4". Laser or Screen/Pad Print. *ColorBlast* Imprint area 3" x 2".

CRUMB SCRAPERS

PROFESSIONAL WAITER'S CRUMB SCRAPERS

1105 Pad Print 1105 Sample

BREAD & BUTTER CO.

Burgundy
03

Black
01

Dark Blue
05

Dark Green
12

1100

1100 Black 01

White
24

Dark Green
12

Dark Blue
05

Burgundy
03

Black
01

1100 Waiter's Crumb Scraper, Aluminum Blade

5-1/2" long, 1-1/16" wide. ABS fingertip ledge handle with built-in pocket clip. Pkg. Code*: BU. Imprint area: 3" x 5/16". Screen/Pad Print.

1105 Waiter's Crumb Scraper, Gold Anodized Blade

5-1/2" long, 1-1/16" wide. ABS fingertip ledge handle with built-in pocket clip. Pkg. Code*: BU. Imprint area: 3" x 5/16". Screen/Pad Print.

10-0155



10-0150 (front/back)

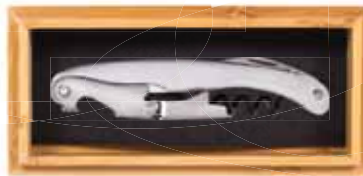


10-0160



This two piece bamboo box makes a handsome presentation for the wine lover on your gift list.

90-081



10-0160 Waiter's Leather Corkscrew Pouch
4-7/8" x 2-1/4". Belt loop on back. Also sold as part of 10-0200 Luxe Waiter's Gift Set. Pkg. Code: BU. Imprint area: 2" wide x 1-1/2" high Laser.

10-0155 Leather Corkscrew Pouch
Compact size fits easily into a pocket. Fine grain leather. Black. 6-7/8" long, 2-3/8" wide. Comes with grape design brass button. Pkg. Code: BU. Imprint area: 1-3/4" x 1/4". Screen/Pad Print. Imprint area: 2" wide x 1-1/2" high Laser.

10-0150 Leather Corkscrew Holster
Conveniently clips onto belt or apron for easy access. Fine grain leather. Black. 6" high, 2-3/8" wide. Comes with grape design brass button. Pkg. Code: BU. Imprint area: 2" x 1". Screen/Pad Print. Imprint area: 2" wide x 1" high Laser.

90-0404



90-00191B



90-0202B



90-081 Waiter's Corkscrew Bamboo Box Two Piece, Window Lid
All bamboo box including base. Eva foam insert can be laser engraved to fit most waiter's corkscrews. 6-1/4" wide, 2-7/8" deep, 1-3/8" high. Pkg. Code: BU. Imprint area: 3" x 3/8" Laser.

90-0404 Leatherette Pull-String Pouch
Fits most waiter's corkscrews. 6-1/4" H, 3-1/2" wide. Pkg. Code: BU. Imprint area: 2" x 2" Laser.

90-00191B Velveteen Pull-String Sack
Special packaging for individual waiter's corkscrews. 6-1/2" H, 1-5/8" W. Pkg. Code: BU. Imprint area: 1-1/2" x 2" Laser. (outline logo or typeset)

90-0202B Velveteen Pull-String Stopper Sack
Special packaging for individual stoppers. 3-7/8" H, 2-7/8" W. Pkg. Code: BU. Imprint area: 1-1/2" x 2" Laser. (outline logo or typeset)

6223

Silver color



6223 Small Organza Gift Bag
Thin, sheer organza fabric in nylon. Ribbon drawstring 6-1/2" H, 4-7/8" W. Useable Space inside 4-1/4" x 4-7/8". Pkg. Code: BU. Imprint area: 2-1/2" x 2-1/2" Screen/Pad Print



Imprinting available on all products
on this page, please inquire.



90-080

90-080 (Corkscrew sold separately).

Laser Engraved
Sample

90-0400



90-0400 (Corkscrew sold separately).

90-0400 Aluminum Waiter's Corkscrew Gift Box

Aluminum framed box with clear acrylic lid and black plastic trim makes a nice gift presentation. EVA foam insert can be laser cut to fit most waiter's corkscrews. 6" L, 2-1/2" H, 1" deep. Pkg. Code: BU. Imprint area: 4" x 2". Laser. **ColorBlast** Imprint area: 4" W X 2" H.

90-080 Bamboo Slider Box, 2 Pieces

The Bamboo slider box with removable lid has an EVA foam insert suitable for custom laser cut to accommodate production insertion. 7-1/2" L, 3-1/8" W, 1-1/8" deep. Pkg. Code: BU. Imprint area: 4" x 2". Laser. **ColorBlast** Imprint area: 4" W X 2" H.

10-0200 (Corkscrew items separately).



10-0200

10-0200 Luxe Waiter's Gift Set

Presentation set for your choice of waiter's corkscrew (maximum 5" long). Leather pouch has a belt loop. Partitioned wood box, clear acrylic sliding top. 6-1/2" x 4-1/4" x 1-3/4" Pkg. Code: BX. Imprint area on lid: 3" x 2". Screen/Pad Print; on short side of box: 2" x 1"; on long side of box: 3" x 1" **ColorBlast** 2-1/4" W x 2-1/4" H on lid. 2" W x 1" H on short side of box. 3" W x 1" H on long side of box.



Color Blast Imprint Sample



90-082 Waiter's box, Made of Bamboo

90-086 Waiter's box, Made of Pinewood

All of the wood boxes are fully hinged boxes that are lined in black velvet. Each box has a black EVA foam insert that is suitable for laser cut to accommodate production insertion. 7-3/8" long, 3" wide, 1-1/2" high. Pkg. Code: BX. Imprint area: 5" x 2". Laser; 5" x 2". **ColorBlast** Imprint area: 5" W x 2" H.

90-082
Bamboo

90-082 (Items sold Separately).



90-086
(Corkscrew sold separately).



new
90-086

CORKSCREWS

10-0170

**10-0170 Server's Holster**

Clips onto belt for easy access. Removable, adjustable webbed waist strap with plastic buckle. Rigid foam padded back panel. Made of strong 600 denier polyester with polyvinyl backing. Zippered back compartment. Three sewn pouches (1-3/4" wide) on the face. Open compartment behind (for order pad). Gusset bottom. Black only. Corkscrew, crumb scraper, and pen not included. Size: 8-3/4" H x 5-1/4" W. Pkg. Code: BU. Imprint area: 2-1/2" x 5/16". Screen/Pad Print.

90-0260



90-0260 Imprinted



90-2002

**90-0260 Waiter's Kit (pouch only)**

This 2-pocket vinyl pouch can hold any waiter's corkscrew (except 2034, 3150) and any waiter's crumb scraper in this catalog. 6-5/8" x 3-1/4". Pkg. Code: BU. Imprint area: 2" x 1". Screen/Pad Print.

90-2002 Storage Pouch, Clear Plastic (pouch only)

This gusseted, clear plastic pouch with white snap button closure can be used to store many different Franmara products. 5-1/4" H x 2-1/4" W, with 3/4" gusset. Pkg. Code: BU. Imprint area: 2-1/4" x 7/8". Screen/Pad Print.

90-0310



90-2120PP



90-2120PP Sample

new

90-2016PP

**90-0310 Deluxe Box for Waiter's Corkscrews**

Clear plastic box with white EVA foam insert and rack hang tag. Fits all waiter's corkscrews not exceeding 5-1/4" in length, by adjusting boot lever position within the box cavity. 6-1/2" x 2-1/2" x 7/8" deep. Pkg. Code: BX. Imprint area: 2" x 1". Screen/Pad Print.

ColorBlast Imprint area: 2" x 1".**90-2120PP Bottle Neck Hanger Pouch (pouch only)**

Clear PVC flexible material. Fits all wine bottle sizes. Tuck-in flap, with rack hang tag. 8-1/2" high, 3-3/8" wide overall. Pouch dimensions: 5-3/4" x 3-3/8". Pkg. Code: BU. Imprint area: 2-1/4" W x 2-1/4" H. Screen/Pad Print.

*ColorBlast***90-2016PP Plastic Pouch for Waiter's Corkscrew**

Clear PVC flexible material with rack hang tag. Fits most waiter's corkscrews (2016, 5100, 2030, etc.) 7 1/2" x 1 3/4". Barcode included. Pkg. Code: BU. Imprint area: 2-1/4" W x 2-1/4" H. Screen/Pad Print.

*ColorBlast***90-0303 Waiter's Corkscrew Plastic Folding Box, Frosted**

Measures 1.6" x 0.6" x 5.4". Fits most waiter's corkscrews. Imprint on corkscrew is visible through the box. Pkg. Code: BU. Imprint area: 2-1/2" W x 1" H. Screen/Pad Print.

90-0303



90-0600



90-0600 Unfolded

90-0600 Corrugated Gift Box for Waiter's Corkscrews

A smart fold-up box with corrugated surface on the outside makes a classy gift presentation for waiter's corkscrews. 100% recycled paper. Fits 5100, 5400, 3275 and most other waiter's corkscrews. Assembled: 5" long, 1-1/2" deep, 3/4" high. Ships flat. Pkg Code: BU. Imprint area: 2-1/2" W x 1" H. Laser.

Merchandise shown is for illustration purposes only and will not be included in pricing.



Ahh Super!™

Two-Prong Cork Extractor



new
2130 Stainless Steel



new
2130SET



new
90-0165
Sleeve also sold
Separate.

Diamond Drag
Sample

Best Quality Guaranteed

Ahh Super!™ Two-Prong Cork Extractors

This category addresses particularly difficult corks as well as perfectly normal corks. Extraction is very easy. The "difficult" corks are usually older corks that are showing signs of crumbling. To remove cork: Ease the twin blades down on both sides of the cork by rocking the handle back and forth until the blades are all the way down. Twist clockwise and pull upward to remove the cork. Some key features:

- Full extraction or partial is possible
- You can re-cork the bottle
- Cap lifter located on top of the metal handle units

2125 Ahh Super!™ Two-Prong Cork Extractor, Chrome Plated

2126 Ahh Super!™ Two-Prong Cork Extractor, Brass Plated

ABS plastic sheath. 4-3/8" long. Sheath colors: Black, Burgundy, Dark Blue, Dark Green, and White. Pkg. Code*: BU, BX, C, PC.

Imprint area: 2-1/4" X 5/8". Hot Stamp or Screen/Pad Print or Laser.

2130 Ahh Super!™ Stainless Steel Body & Sheath Two-Prong Cork Extractor

Brushed Stainless Steel handle and sheath. 4-3/8" long. Pkg. Code*: BU, BX, C, PC.

Imprint area: 2-1/2" X 1/2". Laser or Diamond Drag Engraving.

2130SET Ahh Super!™ Stainless Steel Body & Sheath Two-Prong Cork Extractor / Black Leather Sleeve

90-0165 Black Genuine Leather Sleeve, Only for Ahh Super/Ah-So

2130 and Black leather sleeve measures 5-1/2"L x 3-1/4"W. Pkg. Code: (2130SET) BU, BX, C, PC. (90-0165) BU.

Imprint area: (2130SET) 2-1/2" X 1/2". Laser or Diamond Drag Engraving; (90-0165) 3"x 2" Screen



2124 Jubilee™ Cork Puller - Made in Italy

Attractive design in ABS. Roomy, three finger handle. Two prongs slip between cork and inside bottle neck. 4-5/8" high, 3-1/8" wide. Pkg. Code: BU, PC. Imprint area: 1-3/4" long, 1/2" high on beveled, flat area on handle. Screen/Pad Print.

2127B Ahh Super!™ Two-Prong Cork Extractor, Chrome Plated With Birch Sheath

2128B Ahh Super!™ Two-Prong Cork Extractor, Brass Plated With Birch Sheath

4-1/4" long. Pkg. Code: BU. Imprint area for all the Ahh Super!™: 2-1/4" X 5/8". Hot Stamp, Screen/Pad Print, Laser or ColorBlast

90-2120PP Bottle Neck Hanger Pouch

Clear PVC flexible material. Fits all wine bottle sizes. Tuck-in flap. 8-1/2" high, 3-3/8" wide overall. Pouch dimensions only: 5-3/4" x 3-3/8". Pkg. Code: BU ColorBlast Imprint area 2-1/4" x 2-1/4".

Packaging Code: BU=Factory Bulk Packed BX=Factory Boxed BXR=Retail Boxed C=Regular Carded PC=Premium Carded

CORKSCREWS

new!



Smoke 02

3010



Dark Blue 05

ColorBlast Imprint Sample

ColorBlast Imprinting
Now Available!!!

Unique
PATENTED
Franmara design!

Great for "in-room"
hotel bars.

18 Colors Available!!

Raspberry 22 Turquoise 10 White 24 Yellow 39 Lime 16 Grape 48 Orange 43 Baby Pink 36



3010 Traveler's™ Corkscrew and Bottle Opener

Strong, two-piece ABS plastic corkscrew, foil cutter, and bottle opener. The protective sheath comes off to form a firm crossbar handle. Top constraint is also a metal bottle opener. Great for hotel room service, room amenity, picnic baskets, trade shows, or direct retail. Size 5" overall. Pkg. Code: BU, C, PC.

Imprint area: 2" x 5/16". Hot Stamp. Screen/Pad

ColorBlast Imprint area 2" w X 5/16"h

new

Black 01 Burgundy 03 Dark Blue 05 Dark Green 12 Beige 29

Red 20



Packaging Idea: Here is a Suggested Option...

Use the 6223 Small Organza Gift Bag (see page 46) to make sets of different products of your choice, for example for use as wedding favors. Shown with 3008 Pocket Corkscrew and 8165 Flex-Seal Stopper (see page 87). Also holds waiter's corkscrews, other stoppers, and many additional items in this catalog.



Translucent Clear 26 Translucent Red 21 Translucent Blue 06

new
Smoke 02



3011 Traveler's Wine Kit In Storage Pouch

Consists of one 3010 Traveler's™ Corkscrew and one 8165 Flex-Seal Bottle Stopper. Mix and match colors of your choice.

Pkg. Code: BU, PC. Imprint area on pouch: 2-1/4" x 7/8". Screen/Pad Print. See imprint info for 3010 and 8165 listed separately.

3011



24 Colors Available!!

The ever-popular Pocket Corkscrew category continues to grow in popularity.

new
90-8631

3008



90-8631 Medium Hexagon Tub (1 gal.)
Measures: 8-1/2" x 5-1/4" x 7-1/2".
Pkg. Code: BU.
See pg. 310

3012



3012 Pocket Wine Kit in Storage Pouch

Imprint area on pouch: 2-1/4" x 7/8".
Screen/Pad Print. See imprint info for 3008 and 8165 listed separately. (Includes 3008 Pocket corkscrew and 8165 Flex seal stopper (see pg 87).)



Turquoise 10 Lime 16 Lemon 40 Mango 44 (Orange) Raspberry 22 Baby Pink 36 Black 01 Grape 48 Burgundy 03 Dark Blue 05 Medium Green 13 Dark Green 12

3008 Plastic Pocket Corkscrew

Strong, two-piece ABS plastic corkscrew. The protective sheath comes off to form a firm crossbar handle. Special color match available on orders of 10,000 or more. White color imprint not available. 4-1/4" long.
Pkg. Code: BU, PC. Imprint area: 2" x 1". Hot Stamp.

3009 Two Plastic Pocket Corkscrews- Two (No. 3008) on a Card.

Pkg. Code: C, PC.

Hot Stamp Sample



Burgundy 03

Translucent Colors



Red 20 Woodtone 52 (Yellow) Silver Gray 67 Chocolate Brown 27 White 24 Beige 29 (Bone) Red 21 Clear 26 Purple 51 Green 14 Smoke 02 Blue 06

CORKSCREWS

Ultimo™

Wing Corkscrews



2055



Red 08

Auger Worm

Made in Italy

2056



Black 01

Chrome 59

Spiral Worm

Burgundy 03

At last, the ultimate Wing Corkscrew that does it all!

- Cap Lifter • Foil Cutter • Corkscrew

Ultimo™ Wing Corkscrew with Built-In Foilcutter & Bottle Opener
2055 Ultimo™ Wing Corkscrew, Auger Worm. Chrome Plated/ Enameled Body. Made in Italy.

Color: Red only. 7-1/4" long. Pkg. Code: BU, C, PC

2056 Ultimo™ Wing Corkscrew, Open Spiral Worm, Chrome Plated/ Enameled Body. Made in Italy.

Colors: All Chrome, Black, or Burgundy body. 7-1/4" long. Pkg. Code: BU, C, PC

2049 Wing Corkscrew, Auger Worm, Grape Design, Burnished, Made in Italy

This attractive old-world design features grape clusters and a barrel base. 7-1/2" long. Pkg. Code: BXR

2045 Deluxe Wing Corkscrew, Auger Worm, Chrome Plated, Made in Italy

Heavy-duty. 8-1/2" long. Pkg. Code: BXR.

2046 Heavy Wing Corkscrew with Enamel Finish, Made in Italy

Auger worm 7-5/8" long. Black, Burgundy, Chrome. Pkg. Code: BU, PC.

2047 Heavy Wing with Soft-Touch Color Body

Black auger worm. 7-5/8" long. Black or Burgundy. Pkg. Code: BU, PC.

Imprint Area:

Imprint area for all wing corkscrews on this page except 2049: 1-1/4" X 1/8" (wing handle), 1/4" X 1/2" (body base), 3/16" X 1/2" (vertical on body).
 Pad Print/Laser

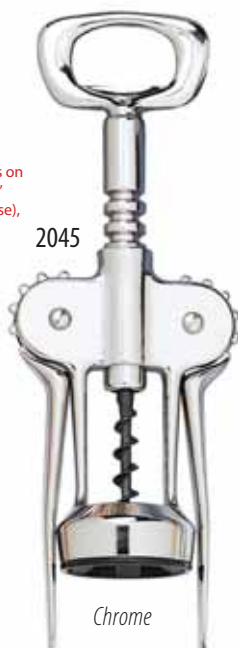


World's Best Wing
 Corkscrews From
 Italy!

2049
 Burnished
 Finish



2045



Chrome

2046



Burgundy 03

Chrome 59

Black 01

2047



Burgundy 03

Black 01



World's Best Wing Corkscrews



2044

Auger Worm



2040

Auger Worm



2041

Spiral Worm



2044 Ebony Wing Corkscrew, Auger Worm, All Black

This handsome all-black matte finish wing corkscrew makes a nice presentation. A non-stick coated Auger worm. Made in Italy. Pkg. Code: BU, BXR, C, PC.

2040 Wing Corkscrew, Auger Worm, Chrome Plated

Strong twist-in, press-down wings designed for swift removal. Includes cap opener, expanded bottle base. 6-5/8" long. Pkg. Code: BU, BXR, C, PC.

2041 Wing Corkscrew, Open Spiral Worm, Chrome Plated

Features an open spiral worm, expanded bottle base. 6-5/8" long. Pkg. Code: BU, BXR, C, PC.

Imprint area for 2040, 2041 and 2044: 1-1/4" X 1/8" (wing handle), 1/4" X 1/2" (body base), 3/16" X 1/2" (vertical on body). Screen/Pad Print. Also, on body base. Laser.



2042

2042 Vantage Wing Corkscrew

This Italian-made corkscrew has a body made of fiber-reinforced polypropylene. Auger worm. Black or Burgundy. 6-1/2" H. Pkg. Code: BU, PC.



Black 01

Burgundy 03



2043



Blue 05

Red 20

White 24

Black 01



Featuring expanded bottle base on 2040, 2041, and 2043.

2043 Wing Corkscrew, Open Spiral Worm, Chrome Plated/Enameled Body, (Italy)

Features expanded bottle base. Burgundy, White, Red, Black or Blue. 6-5/8" long. Pkg. Code: BU, BXR, C, PC. Imprint area: 1-1/4" X 1/8" (wing handle), 1/4" X 1/2" (body base), 3/16" X 1/2" (vertical on body). Screen/Pad Print. Also, on body base. Laser.

CORKSCREWS

Tecno

Heavy-Duty Wing Corkscrew

2052



2052 Tecno Heavy-Duty Wing Corkscrew

Open spiral. 7-1/4" long. Pkg. Code: BX, C, PC.

Imprint area: 3/4" X 1/2". Laser.

3412 Laguiole Deluxe Wing Corkscrew

The heavy weight corkscrew (15.2 oz.) has wood inlaid handles. Open spiral with non-stick black surface on spiral. 6-1/4" long, 2-3/4" wide across base of wing handles. Pkg. Code: BX. Imprint area on base or inlaid handle top: 1" X 5/16". Laser.

3412



2054

Smoke (02)

2054

Clear (25)

2053
Chrome (59)



2053 Primo Wing Corkscrew, Chrome

This large wing corkscrew has easy grip rubber bases on both lever handles. Weighs hefty 12 oz. Chrome plated body. Black coated open spiral. 5-5/8" high. Pkg. Code: BX, C, PC. Imprint area: 1" wide by 1/2" high (on body), Metal Laser.

2054 Primo Wing Corkscrew, Translucent

Same configuration as #2053 but lighter in weight (7.5oz.) Strong plastic body in either Clear or Smoke. 5-5/8" high. Pkg. Code: BX, C, PC.

Imprint area: 1" wide by 1/2" high (on body), Screen/Pad Print.

2039 Tavern Wing Corkscrew - 10 Colors

Stainless steel open spiral worm.

6-5/8" long. Pkg. Code: BU, C, PC.

Imprint area: 1-1/4" X 1/8" (wing handle), 1/4" X 1/2" (body base), 3/16" X 1/2" (vertical on body). Screen/Pad Print.

10 Colors Available



Chrome 59

White 24

Black 01

2039



Burgundy 03

new

new

new

new

new

new



Lime 16

Dark Green
12

Light Blue
09

Dark Blue
05

Orange 43

Red 20

Tavern

Wing Corkscrew

Tavernello™

Heavy-Duty Wing Corkscrews

2058 Tavernello Heavy-Duty Wing Corkscrew, Black Enameled Body

2059 Tavernello Heavy-Duty Wing Corkscrew, Antique Copper Finish

Truly a remarkable Italian giant wing corkscrew. 5-1/4" long double lever arms give increased leverage for easy cork removal. Suitable as a fine presentation corkscrew in food service. The Strong auger worm easily inserts into the cork. . . sharp edges and a sharp point embellish performance. Rubber flaps at the base line up the bottle top. Bottle cap lifter on top. 9-7/8" high, 3-1/2" wide. Weighs over 1 lb. Pkg. Code: BXR (4-Color Box)

Imprint area: 3/4" X 3/4". Laser/Screen.

new
2059

Made in Italy



Antique Copper Finish

new
2058



Black 01

King
CORKSCREW

2090



Made in Italy

2090 King's Corkscrew - Solid Brass

Hand finished reproduction of an early 18th Century English Corkscrew featuring a rack and pinion. Antiqued brass. 7-1/2" high. Pkg. Code: BXR. (Burgundy 2-piece gift box.)

Imprint area: 1-1/2" X 1/4". Laser.

new
2088

Made in Italy



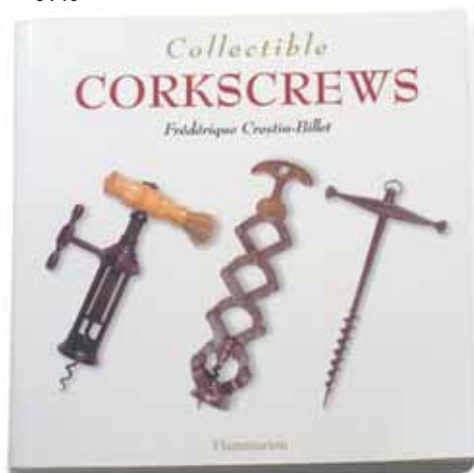
BELLAGIO™
Rack n Pinion Corkscrew

2088 Bellagio Corkscrew

This is a modern interpretation of the 18th Century English Rack and Pinion Corkscrew featured above (#2090). The Bellagio, however, has an Italian design and style. It is lightweight and durable. It comes in a distinctive burgundy color. Here is an historical classic with a new contemporary look. 7-3/4" high. Pkg. Code: BXR. Comes in an innovative Italian-designed package (as shown). Imprint area: 1-1/2" X 1/4". Laser.

CORKSCREWS

6146



Antique

Replica Corkscrews



6146 "Collectible Corkscrew" by Frédérique Crestin-Billet

384 pages. Publisher: Flammarion (March 15, 2001), English. Features over 500 color photographs of corkscrews from rare and valuable early models to recent designer creations. 5-1/2" x 5-1/2" x 1". Pkg. Code: BU.

2079 Barrel Spring Corkscrew - Antique Finish

Copy of an original late 19th Century French corkscrew. Small fork like clip slips into a hole in the shaft to lock the sliding spring barrel. Spring compresses while turning. A resulting counterforce assists in the withdrawal of the cork. 6" tall, 3-1/2" wide at handle. Pkg. Code: BX. Imprint area: 3/16" X 1" Metal Laser.

2074 Rack & Pinion Corkscrew - Antique Replica

Reproduction of a late 18th Century French corkscrew. Produced in zinc alloy metal with a brass finish. Contains open spiral worm. 6-1/2" H. Pkg Code: BX. Imprint area: 1" x 5/16". Metal Laser.

2076 Lazy Tongs Corkscrew - Antique Finish

This is a concertina-type corkscrew. Uses extendable, multi-lever force to remove cork. Cap lifter on each side of lower arm. Early 20th century design. Closed position: 4" high X 4" wide. Extends to 8-1/4". Pkg Code: BX. Imprint area on large lever: 1-1/4" X 1/4". Metal Laser.

2077 Empire Double-Lever Corkscrew - Antique Finish

Levers are directly connected to the worm. Late 19th century design. 5-1/2"H., 4-3/4"W. across top. Pkg. Code: BX. Imprint area across lever arm: 1-3/8" X 1/4". Metal Laser.

2075 Open-Frame Corkscrew with Brush Antique Replica

English 19th century design. The brush is used for cleaning the bottle neck and the bottle top after the capsule is removed. 6-3/8" H. Pkg Code: BX. Imprint area on large lever: 1" X 5/16". Metal Laser.





new
7316



Barrel

Continuous-Turn Corkscrew

7316 Walnut Wood Barrel Corkscrew

Real Walnut wood from European certified forests makes up the attractive body of this corkscrew. Turn the corkscrew spiral continuously into the cork until cork is fully released from the bottle. Now turn the corkscrew handle counterclockwise until the cork falls from the worm. Zinc alloy handle, steel coated spiral. Stands 7" high. Pkg. Code: BXR, 4-Color, magnetic closure. Imprint area: 2" X 3/4". Laser.

Continuous corkscrews are a type of corkscrew that extracts a cork turning in one continuous direction.

7318



Leonardo™

Continuous-Turn Corkscrew

7318 Leonardo™ Corkscrew

The sides of this two-piece, spring loaded corkscrew fit over bottle. Non-stick coating on spiral. Continuous clockwise turning extracts the cork from the bottle. 5-1/4" tall, 2-3/4" wide at the handle. Pkg. Code: BU, PC.

Imprint area: 1-1/2" X 3/4". Screen/Pad Print.

Two-Piece Corkscrew

Quick & Easy Continuous-Turn Corkscrews
you will love!

new
7315



Black 01

White 24

7317



Clear 26

Red 21

Magellan™

Continuous-Turn Corkscrew

7317 Magellan™ Corkscrew

Non-stick spiral inserts into and extracts cork with continuous clockwise turning. 6-1/4" tall, 1-5/8" dia. at base. Translucent colors Clear, Red, and Blue. Pkg. Code: BX (clear plastic with hanger tag), PC.

Imprint area, front: 3/4" X 1/2". Screen/Pad Print.



Blue 06

Ready-Pull™

OneTurn Corkscrew

7315 Ready-Pull™ Corkscrew with Built in Foil Cutter

The sides of this two-piece, spring loaded corkscrew fit over bottle. Non-stick coating on spiral. Continuous clockwise turning extracts the cork from the bottle. Built in foil cutter. 5-1/4" tall, 2-3/4" wide at the handle. Pkg. Code: BXR, PC. Imprint area, front: 3/4" X 1/2". Screen/Pad Print.

Built In
Foil Cutter



**2070 Picnic Corkscrew - Made in Italy**

Two-piece. Continuous clockwise turning extracts the cork. 5" long. Black only. Pkg. Code: BU. Imprint area: 3/4" X 3/4". Screen/Pad print.

2050 Automatic Corkscrew, Chrome Plated, Made in Italy

Spin handle to the top of the spiraled shaft and flip over the ratchet. Continuous clockwise turning inserts into the cork. The ratchet flips over and the cork is extracted. 5-5/8" long. Pkg. Code: BU, BX, C, PC.

2060 Power Corkscrew, Beechwood Handle With Bell - Made in Italy

3-3/8" wide, 5-1/2" long. Pkg. Code: BU, C, PC. Imprint area: 2" X 3/8". Laser.

2065 "T" Corkscrew, Beechwood Handle - Made in Italy

3-3/8" wide, 4-1/2" long. Pkg. Code: BU, C, PC. Imprint area: 2" X 1/2". Laser.

3015 Beechwood Bistro Corkscrew

Reverse helix corkscrew is activated by the lower, larger handle after the upper handle inserts the spiral into the cork. Turning both handles clockwise simultaneously extracts the cork. 7" long. Pkg. Code: BU, PC. Imprint area: 2-1/4" X 1". Screen/Pad Print or Laser.

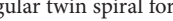
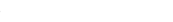
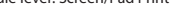
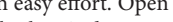
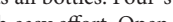
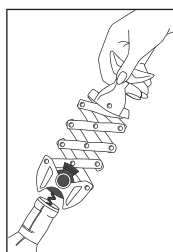
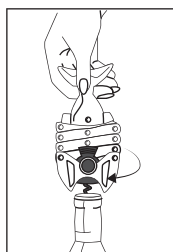
3026SET Ratchet Corkscrew Set

Ratchet corkscrew with stainless steel wine stopper, black wood box. (3 pcs.) See page 70. Pkg. Code: BXR.

Imprint area: 5/8" X 1-1/2" on lever handle. Metal Laser. (See pg. 70 for 3026SET.)



3021



Bar-Pull™

Counter Mount Cork Remover

5512 Bar-Pull™ Cork Remover, Counter Mount, Graphite Finish

new
5512

5511 Bar-Pull™ Cork Remover, Counter Mount, Chrome Plated

5511

5510 Bar-Pull™ Cork Remover, Counter Mount, Brass Plated

5510

The Bar-Pull™ addresses domestic needs and the needs of the home entertainer. Overall length with handle up: 21"; width at handle mount: 3-3/8". Maximum thickness of counter: 1-3/4". Pkg. Code: BXR. Imprint area on wood handle: 3" X 3/4" Laser.



Graphite

Chrome

Brass

Bar-Pull™

Wall Mount Cork Remover

5515 Bar-Pull™ Cork Remover, Wall Mount, Brass Plated

5516 Bar-Pull™ Cork Remover, Wall Mount, Chrome Plated

The Bar-Pull™ addresses domestic needs and the needs of the home entertainer. Overall length with handle up: 21"; 3-3/8" wide at handle mount. Screws and insets are included but a good solid mount is required. Pkg. Code: BXR.

Imprint area on wood handle: 3" X 3/4" Laser.

CAUTION: Must be mounted onto a solid beam or thick wooden wall.

90-5500-12

5515

5516



Brass

Chrome

90-5500-12 Bar-Pull™ Worm Kit

Replacement worm for all Bar-Pulls™.

NOTE: Product numbers 5510/11/12 and 5515/16 are for consumer use only and not for professional use. The six month warranty is void if either machine is used commercially.

4085SET



Le Grape

Uncorking Machine

4085SET Le Grape Uncorking Machine And Table Stand

Attractive, hand-finished antique replica uncorking machine. One full downward stroke removes the cork. The squeezable clamps hold the bottle in place during extraction. Antique brass finish with grape cluster design. Can be clamped to a counter or mounted on the stable stand. 8-1/2" high, 8" overall depth, including handle. Sturdy stand consists of natural wood table base and 5/16" thick x 2" wide steel arm. 19" overall height. Base measures 6-5/8" x 11" x 1-1/2" thick. Pkg. Code: BXR. **ColorBlast** Imprint area 3" x 2". Imprint area: Top of base 3" X 2" Laser.



90-408512



90-408501



90-408505

MOST FREQUENTLY ORDERED LE GRAPE PARTS

90-408501 Le Grape Upper Nylon Guide

90-408505 Le Grape Lower Nylon Guide

90-408512 Le Grape Replacement Worm

ZEUS™



Made in Spain

5061



- Perfect for wineries, bars, restaurants, hotels, and catered events.
- Designed to be mounted to a solid beam or thick wooden wall.
- Available in Brass and Nickel Plating Finishes.
- Ensures an elegant appearance.
- Natural Wood Handle for easy grip.

5061 Zeus™ Uncorking Machine, Wall Mount, Nickel Plated

Leverage arm measures 12" to maximize extracting power. May select three different penetration depths with two knobs at the base. Outside width at wall mount is 3". Depth from wall with handle in full upright position is 3-1/2". Overall height with handle up is 22". Pkg. Code: BX.

Caution: must be mounted into a solid beam or thick wooden wall.

5066



DION™



Made in Spain

5065 Dion™ Uncorking Machine, Counter Mount, Brass Plated

5066 Dion™ Uncorking Machine, Counter Mount, Nickel Plated

Features a sturdy counter clamp with a swing away handle. 10-1/2" lever arm. 3-5/8" at widest point. 11" long central tube. Can accommodate a maximum counter thickness of 1-5/8". Pkg. Code: BX.

5065



For all models of Uncorking Machines shown on pgs. 60 and 61, please refer to Price List for component drawings and parts price list. 2-year warranty against defects in materials and workmanship. Repair service and complete parts inventory offered on all uncorking machines.

CEDON™

*ENJOYS WIDE USE AND
AND HIGH POPULARITY IN
THE FOOD SERVICE FIELD.*

TRULY AN INDUSTRY STANDARD.

Wall and Counter Mount High Volume Professional Machines

4020

4020 Cedon™ Uncorking Machine - Made in Germany, Brass Plated
4021 Cedon™ Uncorking Machine - Made in Germany, Nickel Plated

The Cedon™ is the standard by which other uncorking machines are judged. Bench mounted with a sturdy vise clamp and wing nut. Superior spiral design. 10-1/2" lever arm. 12" tall. Depth from handle top to back of machine is 12". Can accommodate a maximum counter thickness of 1-3/4". Pkg. Code: BX.



4021

CYKLOP™

New & Improved

Foil Cutter



4025

90-4000-12

90-5000-10

90-5000-16

90-4000-12 Cedon™ Replacement Worm

90-5000-10 Dion/Zeus™ Replacement Worm

While holding the threaded shaft secure, unscrew and replace the worm. Pkg. Code: BU.

90-5000-16 Universal Worm Kit

Replacement worm for Cedon™, Zeus™, or Dion™ designed especially to address synthetic corks. Kit consists of: (1) Uncyphered (unsharpened) worm and (2) a threaded shaft to convert worm to a male thread fitting. Pkg. Code: BU.

4025 Cyklop™ Uncorking Machine, Nickel Plated

Counter mounted with a vise clamp and wing nut. Inserts into the cork and extracts it from the bottle in one downward stroke. It also features a side mounted, two-wheel foil cutter. Lever arm measures 8" in length. Overall height is 11". Can accommodate a maximum counter thickness of 2". Depth is 7". Pkg. Code: BX.

CORKSCREWS



U.S. Patented

7445 SWIFTPULL® PRO 2 Wine Bottle Uncorking System
Each Set Features:

- SWIFTPULL® PRO 2 Uncorker
- SWIFTPULL® Foil Remover (4 cutting wheels)
- SWIFTPULL® PRO 2 Compact Table Base (for convenient storage)
- SWIFTPULL® PRO 2 One (1) Extra Replacement Worm

Note: 7452 SWIFTPULL® Foil remover also sold separately (see page 76).
Extra helix worm. ABS plastic base. Pkg. Code: BXR.

IMPRINT INFORMATION FOR SWIFTPULL® PRO 2: Imprint area on top of handle 1-1/2" X 3/4".
Imprint area on body 1-1/2" X 1". Screen/Pad Print or Metal Laser.

See page 70 for 9381SET SWIFTPULL® PRO Set with Champagne Opener.

**Replacement worms for present as well as
previous models**

90-744012



90-744013



90-745212



90-744513



90-744012 SWIFTPULL® Replacement Worm, Old Model

(Look at black inset in handle. "PATENT PENDING" indicates this worm applies).

90-744013 SWIFTPULL® Replacement Worm, Newer Model

(Look at black inset in handle. "PATENT NO 455,058" indicates this worm applies).

90-745212 SWIFTPULL® PRO Replacement Worm

(Look at black inset in handle. SWIFTPULL® PRO indicates this worm applies).

90-744513 SWIFTPULL® PRO 2 Replacement Worm

(Look at black inset in handle. Small PRO2, next to FRANMARA, indicates this worm applies).

**This Is The Only Hand-Held Uncorker To Use A
Professional Helix Worm To Easily Open All
Corks, Natural or Synthetic**

The durable SWIFTPULL® PRO 2 is designed to satisfy the needs of all who open wine bottles. Bottles can be opened rapidly when one or several machines are used in preparation for banquets and large gatherings. SWIFTPULL® PRO 2 is also ideal for home use.

SWIFTPULL® PRO 2 is lightweight and compact: just over one pound (approx. 500 grams). Sturdy all-metal alloy rack and pinion assures smooth extraction. Metal lever and gripper handles are lined with rubber, perforated through the handle to give a more positive grip.

Measures 5-1/4" high, 2-1/2" wide, 7-3/4" long.

IMPRINT INFORMATION FOR SWIFTPULL® PRO 2: Imprint area on top of handle: 1-1/2" X 3/4". or imprint area on body 1-1/2" X 1". Screen/Pad Print or Metal Laser.

The SWIFTPULL® PRO 2 is not a recorking machine. Damage could be caused by using it in this way.



7550 POWER TOWER™ Corkscrew

7555 POWER TOWER™ Deluxe Stainless Steel Corkscrew

Champagne color body, plastic foil cutter, replacement spiral set in velvet tray with instructions inside the lid then set into a magnetic closure box. Measures 7-5/8" high, cylinder, 2-1/4" dia., width (incl. handle) 4-7/8". Pkg. Code: BXR. Imprint area: 2-1/2" W x 1" H Pad Print

Speed-Pull™

Decorker Machine

7748 Speed-Pull™ Decorker With Built-in Foil Cutter. Extra replacement spiral included in set.

Compact, innovative design opens bottles in seconds. Place machine over bottle. Squeeze side handle and turn the bottle to activate foil cutter. Pearl chrome finish. 8-1/8" tall, 4-3/4" wide. Pkg. Code: BXR (with hangar tag).

Imprint area on metal side handle: 1-1/2" X 3/8". Metal Laser.



Enoteca Gift Set



7325 VinoPull™ Uncorker

This economically priced uncorking machine is of strong construction and easily removes all corks. Each unit comes with a foil cutter and extra worm. 4-7/8" high, 2-1/8" wide, 7-5/8" long. Pkg. Code: BXR (4-color box). Imprint area: 3/4" X 5/8" on side handle; 3/8" X 1-1/2" on top of handle. Pad Print.

7525 Enoteca Uncorking Machine - Made in Italy

Smooth, high-tech look. Designed and built in Italy. Inserting/extraction lever is a "U" shaped double arm giving a wide grip at the handle. Vertical handle squeeze-grips the bottle. Set includes table stand and No. 7530 Foil Cutter (pg. 76). 5-3/4" high, 8-3/8" long across handle, 2-1/2" wide. Weight: 1-1/2 lbs. Pkg. Code: BX.

Imprint area on lever: 1/4" X 2"; on body: 1-1/2" X 1". Screen/Pad Print or Metal Laser.

7535SET Enoteca Set

Comes with natural wood hinged box (No. 90-0103). Set includes all 3 items from 7525 from above. Pkg. Code: BX Imprint area on wood box: 5" X 3". Laser.

ColorBlast Imprint area on wood box: 5" X 3".

7340 De-corker Set

Contains hand-held De-corker, foil cutter, stand and a spare spiral. Die cast handles. 6" high X 7-1/2" across top. Pkg. Code: BXR.

Imprint area: 1-1/4" X 3/8" on top of handle, also on metal plate in base 1" X 1". Metal Laser.



Quick-Cork™ Electric Corkscrew

4007 Quick-Cork™ Electric Corkscrew

This rechargeable corkscrew works like a charm and uncorks a wine bottle in 7 seconds. To charge simply insert the adapter cord into the unit and the AC/DC charger into an electric plug. An LED light flashes when the unit is charging. Operates by use of an integrated "UP/DOWN" switch (DOWN to insert spiral into the cork, Up to extract the cork from the bottle). Incandescent blue light illuminates during operation. A foil cutter is built into the top of the corkscrew as a removable cap. ABS high quality plastic silver color body. 9" H. Pkg. Code: BXR Imprint area 1" x 1". Laser.

4007

Foil
Cutter

4006

4006 Wine Bottle Rechargeable Electric Corkscrew

This light but powerful electric corkscrew comes in the shape of a small wine bottle. An "up/down" switch makes operation easy - "down" to insert the spiral into the cork and extract the cork - "up" to remove the cork from the spiral. A small window below the label shows you the position of the cork. Comes with compact electric adapter with small plug that inserts into the back of the corkscrew. About 30 bottles opened with a single charge. Matte soft touch finish. Foil cutter included. 10-1/4" H, 2-1/2" dia. Pkg. Code: BXR Imprint area 1" x 1". Laser.

Dynamo™ Electric Corkscrew

4005

4003

Mighty Pull™ Electric Corkscrew

4003 Mighty Pull™ Electric Corkscrew

This powerful battery run (4 alkaline "AA" batteries-not included) uncorks a bottle of wine in just 6 seconds. The clever table stand doubles as a foil cutter. Rocker switch activates up or down motion. Operates at a low noise level. 10-1/4" H, 2" W. Pkg. Code: BXR. Imprint area 1" x 1". Laser.

4005 Dynamo™ Rechargeable Electric Corkscrew

Powerful, rechargeable corkscrew. Inserts and extracts in one push of the lower "down arrow" button, later the upper "up arrow" button release cork from spiral. Effective on all corks. Incandescent blue light illuminates during operation. Foil cutter stores on charging stand. Set contains: corkscrew, electrical recharging stand (with adapter), and foil cutter.

Brushed stainless steel finish. Unit itself stands 10" high, 2-1/2" dia. Pkg. Code: BXR. Imprint area: 1" X 1" on body. Pad Print.

ColorBlast Imprint area: 3" X 1". On Charging Stand Only

Two of the most powerful
hand-held electric corkscrews available.

4005 Charging Stand with Color Blast Imprint





4004

World's smallest
re-chargeable electric
corkscrew on the market!



Base comes off and
becomes foil cutter.



Robust-Pull™

Automatic Electric Corkscrew

4004 Robust-Pull™ Automatic Electric Corkscrew

This is the smallest re-chargeable electric corkscrew on the market. Aside from its size it is a very powerful cork extractor. Self-activating after you push top button once. Incandescent blue light illuminates during operation. Just place it on a bottle and press downward. Spiral will insert and extract the cork. Take the corkscrew away from the bottle and it will automatically spin the cork off the spiral. Direct plug-in recharger wire. Stands only 7-1/4". Pkg. Code: BXR. Imprint area: Top of base 2" X 1" Pad Print.

Bi-Directional Corkscrew

Powerful Mechanism Easily
Captures & Removes Cork

new
4002



All
Stainless!

Wine Lover's

Stainless Steel Deluxe Set
7 Pieces

4002 Wine Lover's Stainless Steel Deluxe Set, 7 Pieces

Here is a handy kit of tools surrounding a Rechargeable Wine Opener Corkscrew. Accompanying the Wine Opener are a hand operated Vacuum Pump and Two Silicone Stoppers, a Dripless Aerator-Pourer and a Two-Blade Foil Cutter. All components are mounted a base (5" x 5") which contains the charger for the Wine Opener Corkscrew. The Corkscrew itself is powered by a lithium ion rechargeable battery one of the most widely used, reliable, and low-maintenance batteries available. Can open up to 50 bottles on a fully charged battery. Materials of components are mainly stainless steel accompanied with ABS and acrylic elements. Corkscrew: 8" high, Pump, 4-3/4" high, Pourer, 5-1/4" high, Foil Cutter, 2-1/4" high. Pkg. Code: BX Pkg. Code: BXR. Imprint area: On plate in front of foil cutter on base - 1-1/2" x 3/8" high. Laser



Vacuum Stoppers

Stainless Vacuum
Wine Pump

Foil Cutter

Electric Rechargeable
Corkscrew

Wine Lover's Collection arrives with everything you need to Enhance,
Preserve, Pour & Enjoy your Favorite Red or White Wine!

Wine Aerator
Pourer

Aerates as
you Pour!

FRANMARA®
Exclusive

ElectroParagon™

PROFESSIONAL ELECTRONIC UNCORKING MACHINE

This state-of-the-art professional Electronic Uncorking Unit extracts 500 corks an hour.

Great For:

- Wine Bottling Lines
- Hotels
- Tasting Rooms
- Winery Laboratories
- Restaurants
- Banquet Rooms

The ElectroParagon replaces its predecessor, Electropull and Electropull Focus. Electropull was a successful line for more than a decade until the producer retired and closed production. (We will continue to furnish OEM component parts and service for existing Electropull units.)

THE NEW ELECTROPARAGON™

ElectroParagon™ is the result of years of research and engineering. It sells at a better price than Electropull and has a simpler modular construction. The line consists of three (3) options:

4012 ElectroParagon™ Electric Uncorking Machine (Wall Mount)

ElectroParagon is a Heavy-Duty Electric Uncorking Machine that can extract 500 corks an hour, with little effort reducing labor costs dramatically!! This is the wall-mount unit as shown in Figure 1. This unit has wall mounting hardware included. It stands 21-3/4" H, 5-1/2" wide and 7-1/2" deep. The unit weighs 16 lbs. Pkg. Code: BX

4013 Table Stand Base For ElectroParagon™ Electric Uncorking Machine (see page 63).

The 4012 unit mounts on this stand to allow for a counter or tabletop installation. Hardware is included for mounting the wall-mount unit on top. It stands 17-1/2" H. and 9-1/2" wide and 10-5/8" at the base. The unit weighs 14 lbs. Pkg. Code: BX

4014SET ElectroParagon™ Electric Uncorking Machine With Table Stand Base (Stand Included In Price)

This combines the 4012 ElectroParagon™ and the 4013 ElectroParagon™ Table Stand with a savings in price over buying each separately. Shown in Figure 2. The combined unit stands 38" H and weighs 29 lbs. Ships in two cartons. Brief assembly required. Pkg. Code: BX

To Operate :

Place a bottle, with capsule removed, into the cradle. This automatically triggers the downward movement of the spiral into the cork. It then continues to extract the cork (remove the bottle at this time). The spiral then goes up and expels the cork and the cork falls from the machine.

New Improvements Over Electropull Focus:

1. Convenient Modular Component System
2. Handle included on top
3. More powerful motor
4. Advanced Electronic Components
5. Lower price

1210 CAP-CUT Professional Wall-Mount Wine Bottle Capsule Cutter - Made in Spain

Innovative capsule cutting system. High impact plastic casing. Back wall-mount part separates from the body and mounts to the wall (screws, wall plugs and washers included). Insert bottle into the U-shaped white bracket. Press the moveable part twice; three cutting wheels remove the foil from the bottle. 4-5/8" deep (from wall), 4-3/8" wide, 2-1/4" high. Pkg. Code BX.

Imprint area: 1-1/4" X 1-1/4". Screen/Pad Print.

Patents in the U.S.A. and other countries.



Figure 1
4012

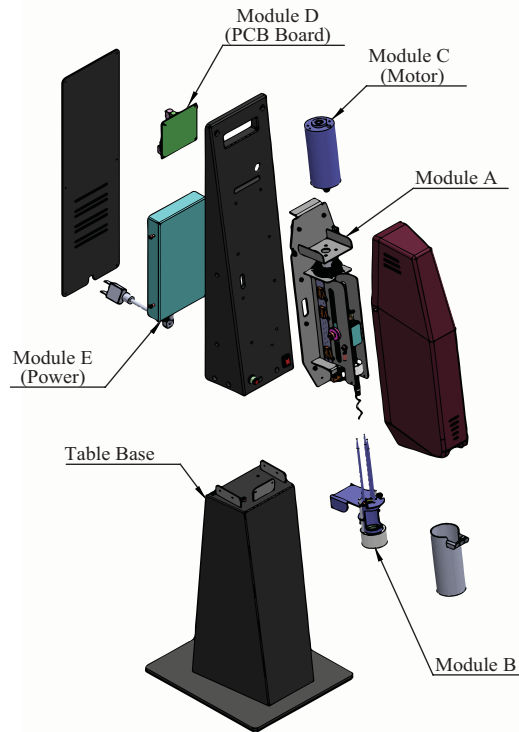


Figure 2
4014SET



1210

Anatomy of ElectroParagon



4012
ElectroParagon™ Wall-Mount
Version

4014SET
ElectroParagon™ on
Table Stand Base

4013
ElectroParagon™
Table Stand
Base

4016



4016 ElectroParagon™ Cork-Catcher Bag™ For 4012 And 4019

This is an indispensable accessory when you need to remove a lot of corks in a short period of time with the ElectroParagon™. The efficient Cork-Catcher Bag consists of two parts: (1) the top apron which attaches to the ElectroParagon™ unit and (2) the bag itself. The bag is attached to the upper apron with snaps (behind the red band). When the bag is full, a pull string cloth top casing comes up over the corks to seal them in the bag. The detached bag can then be removed without the risk of corks spilling everywhere. The bag will hold up to 600 corks. The unit utilizes laminated PVC and polyester materials in its construction. Measurements: top apron, 11-1/2" x 20"; bag itself, 10-1/4" x 7-7/8" x 22"; overall total unit height, 39-3/4".
Pkg. Code: BU

90-4012WRK Worm ElectroParagon™ Replacement Kit

ElectroParagon™ Worm
Replacement Kit. Kit includes
worm for 4012 or 4014SET
and allen wrench. Instructions
included.
Pkg. Code: BU (polybagged).

90-4012WRK



Patents in the U.S.A. and other countries.

CORKSCREWS

new! ELECTROPULL II™

PROFESSIONAL ELECTRONIC UNCORKING MACHINES

Great For:

- Wine Bottling Lines
- Hotels
- Tasting Rooms
- Winery Laboratories
- Restaurants
- Banquet Rooms

4019 ElectroPull II™ Professional Uncorking Machine

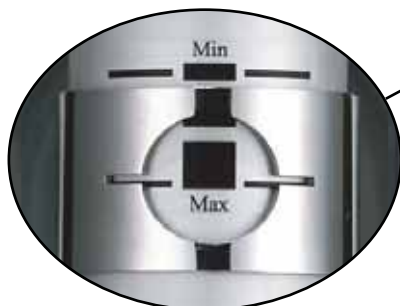
This heavy-duty work horse of a machine is covered by six different U.S. patents. Originally designed for use in a winery by an Italian winemaker, this machine removes corks quickly and effortlessly. This machine is designed to remove corks completely or partially for later consumption (ex. banquet events). Digital Bottle Counter. Unit measures: 39-3/4" tall, 7-1/4" wide and 7" deep. The unit weighs 25.4 lbs. Includes a tool box, with two spare spirals and foil cutter built into the base. Pkg. Code: BX



Bottle Counter & Counter Reset



Override Button



Partial Extraction



Tool Kits w/ 2 Spirals



new
4019



Power Button



Foil Cutter



4019

One winery-packaging specialist in California comments.

"In just two months, we uncorked over 50,000 bottles using the ElectroPull® and its performance was flawless. We also used it in our lab when performing microanalysis and opened bottles with all types of corks. Not only is the ElectroPull® fast and efficient, but I believe it will reduce injuries associated with uncorking motions. It definitely has a place in any wine bottling department."

FRANMARA®
Exclusive

It has a unique 2.7 mm hardened stainless steel open spiral. This worm has no difficulty with hard agglomerate or plastic corks. Machine will shut down if hard object (other than wine bottle) is placed in cradle.

Re-starts in 30 seconds.

Patents in the U.S.A. and other countries.

new! ELECTROPULL II™

PROFESSIONAL ELECTRONIC UNCORKING MACHINES

new
4019

The latest in an electric professional uncorking machine.

Sleek new design. Comes with a built-in stand.

Extracts 500 Corks per hour.

Exclusive Partial Extraction Feature!



The function is much the same as the ElectroParagon™ with certain added features. This newly designed unit integrates features from the original ElectroPull® plus more. Those added features are:

- **Partial Extraction:** A sliding up-and-down gauge allows at "Min" the extracting of just 1" of the cork from the bottle. At the Medium (half-way point) adjustment only 1-1/2" of the cork is extracted. At the bottom of the gauge ("Max") complete extraction takes place. These partial extractions are great for pre-opening many bottles in advance for large dinner parties or gatherings without exposing the wine to air.
- **Bottle Counter:** Enables counting bottles opened on a digital screen. Easily resets when needed.
- **Worm Replacement Kit:** All the tools needed for replacing the worm are located in a compartment in the lower left of the machine near the base. The kit contains two (2) spare replacement spirals, two (large and small) Allen wrenches and a spare fuse.
- **Foil Cutter:** A foil cutter is located in a compartment in the lower right of the machine near the base.
- **Machine Specifications:** Measures: 39-3/4" tall, 7-1/4" wide, 7" deep, weight: 25.4 lbs. 24V DC upper and lower motor. Power: 200W. Electrical Range: 110V-240V AC, 50-60Hz.

4016 Cork-Catcher Bag™ For 4012 And 4019

This is an indispensable accessory when you need to remove a lot of corks in a short period of time with the ElectroPull II™.

The bag will hold up to 600 corks. The unit utilizes laminated PVC and polyester materials in its construction.

Measurements:

top apron, 11-1/2" x 20";

Bag itself, 10-1/4" x 7-7/8" x 22";

Overall total unit height, 39-3/4".

Pkg. Code: BU

90-4019WRK Electropull II Worm Replacement Kit

Electropull II Worm Replacement Kit includes worm for 4019 and allen wrench. Instructions included. Pkg. Code: BU (polybagged).

90-4019WRK



CORKSCREWS

Patents in the U.S.A. and other countries.

Corkscrew

Gift Sets

8845SET



Enhance your wine tasting experience or simply enjoy a bottle of good wine with these premium wine accessories gift sets.

8845SET Celebration Wine Gift Set

Contains a 3199 curved stainless steel corkscrew with opener and knife, Wine bottle drip collar (felt lined), stainless steel wine thermometer (C° and F°), and a bottle stopper with rubber seal. Packaged in a burgundy color hinged wood box. 4-7/8" X 6-5/8" x 1-3/4" Pkg. Code: BX.

Imprint area: Box, 3" X 3". Laser. 3199, 2-1/2" X 3/16". Laser.

ColorBlast Imprint area: 4" X 4". Box only.



Ideal gift for wine lovers and wine enthusiasts

9381SET



3026SET Ratchet Corkscrew with Stainless Steel Wine Stopper, Black Wood Box (3 pcs)

Set contains a #3025 corkscrew (page 58) plus a s/s wine stopper. The stopper pushes onto the bottle. Press on the spring-loaded top to release from the bottle. Stopper 2" high, 1-3/4" dia. Black box 8" X 5" x 3-1/2" high. Pkg. Code BX.

Imprint area: 3025, 1-1/2" x 5/8". Laser.

ColorBlast or Screen Printing. Imprint area: 4" X 4". Box only.



3026SET



9381SET SWIFTPULL® PRO Set with Champagne Opener (4 pcs)

Natural wood box contains No. 7445 Swiftpull® PRO 2 (page 62), No.

7452 Swiftpull® Foil Remover (page 76), No. 7460 Swiftturn™ Champagne Opener (page 77), and replacement worm. Box measures 10-1/4" long, 7-1/4" wide, 3-1/2" deep. Also available in black wood box. Please specify. Pkg. Code: BX.

Imprint area on box: 5" X 3". Laser. *ColorBlast* Imprint area: 4" X 4". Box only.



Imprinting available on all products on this page, please inquire

Bottle Gift Sets

Decorate Any Bottle Gift Set

With Your Logo On It!

See Page 321
For Full Color Doming.



Comes with generic winery label as shown.
Custom 4 color label available see item 9388 for sample.



9388SET



9388SET
With Four Color
Decal

9386SET Chateau Swingout Bottle Gift Set (6 pcs)

Hinged, shiny outside finish. This bottle-shaped cabinet with magnetic closure contains a stainless steel curved corkscrew, foil cutter, chromed bottle stopper, s/s drip collar and s/s pourer with stopper. Weighs: 1 lb. 1 oz. Stands 12-1/2" high. 3" dia. Pkg. Code: BXR.

Imprint area: Laser or Pad Print on corkscrew 2" x 3/16". Imprint area on Bottle: Four Color Label. (Wine Label Size) 4" x 4"

9388SET Swingout Bottle Gift Set (6 pcs)

Hinged, rubberized surface. This bottle-shaped cabinet with magnetic closure contains a stainless steel curved corkscrew, foil cutter, chromed bottle stopper, s/s drip collar and s/s pourer with stopper. Weighs: 1 lb. 1 oz. Stands 12-1/2" high. 3" dia. Pkg. Code: BX.

Imprint area: 3199, 2" X 3/16". Screen/Pad Print or Metal Laser on corkscrew.
Imprint area on Bottle: Four Color Label. (Wine Label Size) 4" x 4"
Imprint area on Bottle: Full Color Doming Label. (Wine Label Size) 4" x 4"

9387SET Mini Swingout Bottle Gift Set (4 pcs)

Smaller version of #9288SET with just three (3) essential tools: curved corkscrew, chrome bottle stopper and s/s drip collar. 9-1/4" H, 2-3/4" dia. Pkg. Code: BX.

Imprint area on Bottle: Four Color Label. (Wine Label Size) 3" x 3"; on corkscrew 2" x 3/16". Laser



9387SET

CORKSCREWS



new
4062



Sturdy Cutting Wheels

4062 Monopol® Foil Cutter Mondo

Elegant satin finish. Enables easy foil cutting with three sturdy cutting wheels. Spring loaded. The tong like shape offers flexible adjustment to different size bottle necks. 2-5/8" high. Zinc die cast. Pkg. Code: BXR Imprint area: 1" X 3/4". Laser Engraved.



4060 Monopol® Pourer Versa

This brushed, heavily constructed stainless steel pourer has an unobtrusive design. Flip top automatic closure at pouring edge. Silicone sealing elements. 3-7/8" high. Pkg. Code: BXR

Imprint area: 5/16" X 5/16". Laser Engraved.



new
4060



4059 Monopol® Wine Bottle Stopper Vino

This heavily counter-weighted, high quality stainless steel stopper seals bottles very well. Silicone sealing element. 3-1/4" high. Pkg. Code: BXR

Imprint area: 1" X 1". Laser Engraved.



new
4059



4058 Monopol® Champagne Bottle Sealer Tappa

German made. Satin finished. Heavy, spring-loaded clamp system can be operated with one hand. Bottle may be stored horizontally once sealed. Steel and ABS construction. 3-1/2" tall. Pkg. Code: BXR

Imprint area: 1" X 1". Laser Engraved.



new
4058





HIGH QUALITY

MADE IN GERMANY

Monopol® is an independent brand of German products that has been around for many years. Their timeless designs and their product durability have made them world famous.

These Precisely Crafted Tools are Built to last!



4050 Monopol® Lever Corkscrew Fino

This elegant, heavyweight satin finished double lever corkscrew is made in Germany. Very solid. Original Monopol cutting thread penetrates the cork efficiently. For natural or synthetic corks. Cap remover above. Stands 8-1/8" tall. Zinc die cast and steel construction, Pkg. Code: BXR Imprint area: 1" X 3/4", Laser Engraved.



new
4053

4053 Monopol® Bell Corkscrew Barolo

Made in Germany. Satin finished, high class look. Equipped with the original Monopol cutting thread. High class look with visibly solid elements. Zinc die cast and steel construction. 6" tall. Pkg. Code: BXR Imprint area: 3/4" X 3/4", Laser



new
4052

4052 Monopol® Bell Corkscrew Chianti

Satin finished. Made in Germany. A very solid original Monopol cutting thread and a smooth, free flowing top spiral. Excellent finished mechanism. For natural or synthetic corks. 6" tall. Zinc die cast and steel construction. Pkg. Code: BXR Imprint area: 3/4" X 1/4", Laser

new
4055

Beautifully Crafted



Built to Last
High Quality

new
4057

4057 Monopol® Champagne Bottle Sealer Verno

Chrome plated, tight closing. The elastic rubber ring gives pressure to the metal wings. The bottle may be stored horizontal. Steel and ABS construction. 2-1/2" tall. Pkg. Code: BXR Imprint area: 1" dia. Screen. Imprint area: 3/4" dia. laser on metal wings.



4055 Monopol® Ah-So Bottle Opener Satin Finish

Extraordinarily famous for many years. Comes with the original satin finish. Two hardened steel prongs embrace the cork without damaging it. Ideal for brittle corks. Comes with decorative sheath. With cap opener. Steel, zinc die cast. 4-3/8" tall. Pkg. Code: BXR Imprint area: 2" X 1/2", Laser Engraved.

WINE ACCESSORIES

new
8987



CELLAR *Dine*™

INNOVATION COLLECTION



Designed in the UK

This line of special products was designed
and invented in the UK

INNOVATION AT ITS BEST

8987 Cellar Dine™ Wine Accessory Gift Set

This set contains a Stainless Steel Waiter's Corkscrew, a Stainless Steel wine pourer with stopper, Vacuum wine saver and two stoppers. 4-color box.
Pkg. Code BXR.

THERM *au Rouge*®

new
8992



- Gently warm red wine to the ideal serving temperature - in minutes!
- Chill warm wine bottles in 10 minutes!

8992 Therm Au Rouge® & White Wine Chiller Gift Set

In this stylish set, the Therm Au Rouge red wine warming sleeve (see above) comes together with a Flexicles Bottle Chiller. The chiller stores in the freezer. It will chill warm wine in 10 minutes. It consists of a slide sleeve and an ice mat. 4-color box.
Pkg. Code BXR.

8993 Therm Au Rouge® Red Wine Warming Sleeve

"Chilly reds are the thing of the past," says the inventor of this item. A small metal clicker at a corner causes the warm gel to flow around the sleeve. 5 minutes for light-bodied reds and 12 minutes for full-bodied reds. Enjoy the full bouquet and flavor of your red wine. Stands 5-5/8" tall. 4-color box.
Pkg. Code BXR.

new
8993



Everybody knows that to enjoy a bottle of red wine it needs
to be consumed at the ideal temperature. This warming sleeve and its magic
formula is the perfect solution!

CELLAR Dine™

INNOVATION COLLECTION

 Designed in the UK



new
8997



new
8985



Chills, Serves and Preserves

8997 Cellar Dine™ 3 in 1 Chillcore™

Chills, serves and preserves wine. It will help your drinks remain cold from the inside thanks to its unique inner gel and design shape. It will also help to serve/pour your wine easily and close the bottle for preservation after use. Stores in freezer. 4-color box. Pkg. Code BXR.

8985 Rouge 02® Electronic Wine Breather

You can enjoy your wines at their best within minutes of opening. It works by gently bubbling air through the wine releasing its full bouquet and flavor. Takes two AAA batteries (not included). 4-color box. Pkg. Code BXR.

Brings out the full bouquet in less than a minute



new
8981



new
8982



8980 Zap Cap® Bottle Crown Cap Opener, Stainless Steel

8981 Zap Cap® Premium Bottle Crown Cap Opener, Matte Black Stainless Steel

8982 Zap Cap® Bottle Crown Cap Opener, White ABS

The
Original Zap Cap
Bottle Opener

Unique push and pop-off bottle cap remover. To remove a bottle cap from beer, water or soda, place Zap Cap® on the bottle and push it down to magically remove the cap. The magnet holds the cap for easy disposal. 4-color box. Pkg. Code BXR. Imprint area on top: 1-1/2" dia. Laser on 8980, 8981. Pad Print on 8982



new
8980

WINE ACCESSORIES



1230 Two-Blade Foil Cutter

There are two levels on both cutting wheels, 1/4" apart (see illustration). The top level is for wider flange bottles; the lower level is for all other bottles. Two anti-slip rollers firmly guide the cutting wheels for a good, even cut. 2-1/4" wide, 2-2/4" high, 3/4" deep. Pkg. Code: BU, PC.

Imprint area: 1" wide X 5/16" high on one side. Screen/Pad Print.



1200 Clean Cut™ Foil Remover

Several turns remove the foil capsule from the wine bottle. 3-1/8" long. Pkg. Code: BU, C, PC. Imprint area on top or side: 1-1/4" X 5/16". Screen.



7452 SWIFTPULL® Foil Remover

Newly designed and improved with four cutting wheels and plunger. Thumb pressure on the sliding, spring-loaded plunger activates the rotating cutting wheels. 3-1/4" wide, 3" high. Pkg. Code: BX, PC.

Imprint area: 3/4" X 1/2". Screen/Pad Print on black button. Laser on silver part.



7532
Top side
Bottom side

7532 Boomerang™ Foil Cutter – Made in Italy

At last, the original, full-sized extendable four-wheel "FOILKUT" system foil cutter stands by itself. Small opening at the top allows keychain mounting. 1-7/8" x 1-1/16" wide. Pkg. Code: BU.

Imprint area: 1-1/2" X 3/8". Screen/Pad Print and Hot Stamp.



9351

9351 Heart-Shaped Foil Cutter, Silver Plated

Three cutting wheels inside; two stationary, the other moveable on the spring-loaded side plunger. 2-3/4" high, 2-3/8" wide. Pkg. Code: BX.

Imprint area: 1-1/4" X 3/4" Laser.



Bottom side

1208

6 Blades!

1204 Foil-Clip™ Four-Wheel Foil Cutter

Good, quick foil removal. 2-3/4" in length. Pkg. Code: BU, PC.

Imprint area: 1" wide X 5/16" high on one side. Screen/Pad Print.

1208 Six- Blade™ Foil Cutter, Stainless Steel

This clamp-style, spring loaded wine bottle foil cutter is equipped with six cutting wheels. 2-1/4" across.

Pkg. Code: BU, PC. Imprint area: 1-1/8" x 1/2" Laser



1204

Customize Any Foil Cutter
With Your Logo On It!

Champagne OPENERS

Made in Italy
2022

Four Different Uses



For corks



For screw tops



For champagne



For bottle caps



2021

2022 Multi All-Purpose Aluminum Waiter's Corkscrew (Four Uses)

Fresh, new design. Built-in hinged wrench above to open screw top or Champagne bottles. Contoured, serrated knife blade. Cap lifter. Stainless steel metal parts including spiral. 5-3/4" long. Comes with leather pouch with holster. Pkg. Code: BU. Imprint area: Top of wrench: 1-1/2" x 5/16", Laser.

2021 Bacchus™ Champagne/Wine Opener

This universal tool removes wine and Champagne corks, screw tops, bottle caps and cracks nuts. The anodized aluminum body has a two-step boot lever and sturdy serrated knife blade. To grip a Champagne cork open the hinged handle at the top. A ribbed gripper on one side clenches the cork to turn it loose from the bottle. Black coated spiral. 5-1/2" L, 1-5/8" W. Black

Pkg. Code: BX, PC. Imprint area (top): 1-1/4" x 1/4". Pad Print, Laser on lever.

9350



9350 Champagne Pliers, Silver Plated

Attractively designed piece gives a positive grip for Champagne cork removal.

3-1/2" wide, 4-1/2" long. Pkg. Code: BX.

Imprint area: 1" X 1/4". Laser.

Sleek, Elegant and Safe



7460

7460 SWIFTURN™ Champagne Opener

This opener is part of the SWIFTPULL® family of hand-held uncorking equipment. This easy-to-use Champagne opener will provide the perfect finish to your SWIFTPULL® collection.

The SWIFTURN™ prevents eye injury from flying Champagne corks because the cork is captured before the wire muzzle is broken or twisted. Satin Nickel finish. 3" wide at the top and 4-1/2" high. Pkg. Code*: BXR (with hanger tag), PC.

Imprint area: 1" X 1/4" across the top (on either side of the hinge). Metal Laser or Pad Print.

Companion to Swiftpull® set on page 54.

2257

2257G



2264 Champagne Combo Opener/Stopper

This unique unit is a combination Champagne cork remover that also doubles as a stopper. The rubber Champagne stopper up inside the opener can be used to store leftover Champagne. Stands 2-3/4" H, 1-1/2" dia.

Pkg. Code: BU, PC.

Imprint area: 1-1/2" x 3/4". Screen/pad Print

2257 Champagne Opener™, Chrome

2257G Champagne Opener™, Gold

Safely opens sparkling wines. Grasp the cork before twisting or breaking the wire muzzle for completely safe extraction. Measures 3-3/4" across, 4" high.

Pkg. Code: BU, BXR. Imprint area: 1" X 1/2". Laser.

Made in Italy

new

2292

Olivewood Handle



Made in Italy

Mathusalem

Champagne Sabers

Here are five exquisite Champagne Sabers made in Italy. These unsharpened sabers are designs reminiscent of the Napoleonic Age. Each of the models below are 18-1/2" long overall and weigh just over one pound each. Pkg. Code: BX (Solid Wood Box)
Laser Imprint area: 3" x 3" Box. 4" x 1" on Blade.

new

2291 Brazilian Rosewood Handle



2290 Mathusalem Champagne Saber with Cocobolo Rosewood Handle

2291 Mathusalem Champagne Saber with Brazilian Rosewood Handle

2292 Mathusalem Champagne Saber with Olivewood Handle

new

2290 Cocobolo Rosewood Handle



High Carbon Damascus Steel!

Made in Italy



Beautiful Solid Wood Box!

**new! Limited Edition!**

2295 Mathusalem Damascus Champagne Saber with Cocobolo Handle

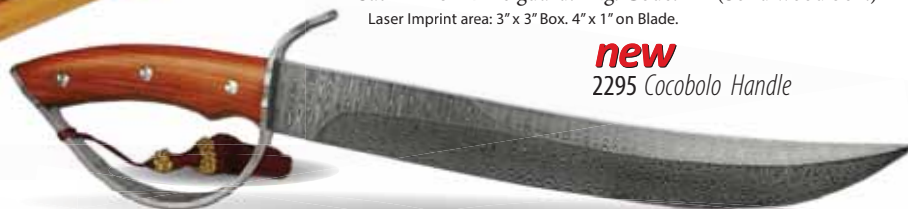
2296 Mathusalem Damascus Champagne Saber with Ebony Wood Handle

These sabers are Limited Edition models. Feature high carbon Damascus Steel unsharpened blade exquisitely executed with a high contrast etched design pattern. Satin finish knife guard. Pkg. Code: BX (Solid wood box.)

Laser Imprint area: 3" x 3" Box. 4" x 1" on Blade.

new

2295 Cocobolo Handle

**new**

2296 Ebony Handle



Made in Italy

new!

Pulltex®

Sabre à Champagne

...feel the wine experience

new
2266



Made in Spain

**2266 Sabre à Champagne –
Champagne Sword***

A magnificent saber made in the tradition of hussards under Napoleon showing off their horseback skills by sabering Champagne. This model has a blunt stainless steel blade and stainless bolster with a wood inlaid handle. Red tassel is threaded through a hole in the handle. 18" long overall. Comes in snap closure wood box.

Packaged inside a heavy cardboard box with four-color sleeve. Dimensions: 20" x 6-1/2" x 2-1/2" high. Pkg. Code: BX Laser Imprint area: 3" x 2" Box. 4" x 1" on Blade.

new!
LAGUIOLE
Tradition

new
2262



Ebony Handle

new
2261



Olivewood Handle

**2265 Laguiole Champagne Saber,
Rosewood Handle***

**2261 Laguiole Champagne Saber,
Olivewood Handle***

**2262 Laguiole Champagne Saber,
Ebony Handle***

Back to the days of Napoleon, many victories were celebrated by decapitating bottles of bubbly with their swords. The saber was the weapon of choice back then and the whole ritual of celebration has evolved today and is still used by some to open bottles of Champagne. This impressive model has a blunt stainless steel blade, brass bolster, rivets and an inlaid rosewood handle. Traditional Laguiole decor embosses the handle and bolster. Blade 11-3/8" long, overall, 16-3/8" long.

Pkg. Code: BX(2-piece slide-top wooden box which is 17-1/2" L x 3-3/4" W).

Laser Imprint area: 3" x 3" Box. 4" x 1" on Blade.

2265



Rosewood Handle

***WARNING: The saber should only be used by an experienced sommelier trained in the art of sabrage.**

WINE ACCESSORIES

79

ASI 55450

WHL. 16-17
Price List

ADV. 15
Price List

Packaging Code: BU=Factory Bulk Packed BX=Factory Boxed BXR=Retail Boxed C=Regular Carded PC=Premium Carded

2245



Turn the top to mark the date of the month.

2245 Champagne Pump Re-Sealer, ABS Plastic Body

Keep leftover Champagne fresh and flavorful. After placing the stopper on the bottle of sparkling wine and snapping the swing-down arms in place begin to pump the top button up and down. Do this until resistance is felt. Will keep bubbles fizzy longer. Turn the top to mark the date of the month that you sealed the bottle. 3" H, 1-3/8" dia. Pkg. Code: BX, PC. Imprint area: 1-1/2 x 5/16" dia. Laser.

2255 Secur-Seal Champagne/Wine Stopper, Stainless Steel

This stainless steel stopper fits over any Champagne or wine bottle. Turn the "T" handle clockwise to compress an internal rubber gasket which expands within the bottle neck for a good, tight seal. 2-7/8" high, 1-7/8" wide (at the "T") Pkg. Code: BXR. Imprint area: 1" X 1/2" Laser.

2255



2244

Orange 43



Clear 25



Yellow 39



Green 13



Black 01



Red 20

Folds flat for storage

2244 Easy-Seal™ Champagne Stopper

This stopper has two spring-loaded, fold-up wings that clamp down under the sealing ring of a Champagne bottle. Flexible silicone seal extends 3/8" into the inside of the bottle. Folds flat for storage. 1-1/2" high folded down, 3" wide in closed position. Pkg. Code: BU.

Imprint area: 1-1/4" X 3/4". Screen/Pad Print.

2246 Snap-Down Champagne Stopper, Black Plastic 2247 Snap-Down Champagne Stopper, Chrome Plated Plastic

Compresses within bottle neck. Locking arm secures under glass muzzle ring. 2-3/4" high (open), 1-1/4" top dia. Pkg. Code: BU, C, PC Imprint area: 3/4" X 1/2". Screen

2246



Black 01

2247



Chrome

new
2259S



Brushed
Stainless Steel

new
2259G



Gold Plated

new
2259C



Copper Plated

new
2259N



Graphite Finish

2259S Quick Seal™ Champagne Stopper, Brushed Stainless Steel

Attractive Champagne Stopper with extended seal in stainless steel. 3-1/2" high, 1-3/8" dia. Pkg. Code: BX Imprint area: 3/4" dia. Screen

2259G Quick Seal™ Champagne Stopper, Gold Plated

Gold plated over stainless steel. 3-1/2" high, 1-3/8" dia. Pkg. Code: BX Imprint area: 3/4" dia. Screen

2259C Quick Seal™ Champagne Stopper, Copper Plated

Copper plated over stainless steel. 3-1/2" high, 1-3/8" dia. Pkg. Code: BX Imprint area: 3/4" dia. Screen

2259N Quick Seal™ Champagne Stopper, Graphite Finish

Graphite finish over stainless steel. 3-1/2" high, 1-3/8" dia. Pkg. Code: BX Imprint area: 3/4" dia. Screen

Super-Seal™

Champagne Bottle Stoppers

2250 Super-Seal™ Champagne Stopper, Nickel Plated - Made In Italy

2250G Super-Seal™ Champagne Stopper, 24K Gold Plated - Made In Italy

Inserts 1/2" into Champagne bottle neck. Special internal appendage inside the rubber seal helps to disperse carbonation evenly. Keeps effervescence alive for days. 2-1/4" high, 1-1/4" dia.

Pkg. Code: BXR, C, PC. Imprint area: within 1-1/8" dia. Factory Metal Stamp Neutral or Lacquer Fill. Screen/Pad Print or Laser.

2251 All Black Super-Seal™ Champagne Stopper, Enameled Body - Made In Italy

Italian-made. Has a durable, heavy black enamel finish. 2-1/4" high, 1-1/4" dia.

Pkg. Code: BXR, C, PC. Imprint area: within 1-1/8" dia. Screen/Pad Print.

2252 Super-Seal™ Champagne Stopper, Nickel Plated/Enameled Body - Made In Italy

2-1/4" high, 1-1/4" dia. Powder coat finish on the body. Black or White. Pkg. Code: BXR, C, PC.

Imprint area: within 1-1/8" dia. Screen/Pad Print.

Plated/Enameled Body



2250 Nickel Plated



2250G Gold Plated

Limited Supply



2252 Black Enamel 01



2252 White Enamel 24



2251

new

All Black Enamel 01

2280 Doming Champagne Stopper

This Champagne Stopper is designed with a recessed top to accept Full Color Doming Labels. 2-1/4" H, 1-1/2"W.

Pkg. Code: BX Imprint area : 1" dia. Doming Label (Recess Top).

2258 Universal™ Champagne/ Wine Stopper

This oval-shaped universal bottle stopper fits all Champagne and wine bottles. Stands 2-1/2" high, 2-1/4" wide. Pkg. Code: BU, PC.

Imprint area on plastic top: 1-1/4" dia. Screen/Pad Print and Doming Label (Recess Top).

2254 Primo Champagne Stopper

Luxury stainless steel Champagne stopper. Heavy top, item weighs 4.7 oz. 1-5/8" top dia. 2-5/8" H Pkg. Code: BXR.

Imprint area 1"x 1": Metal Laser

2256 Bouchon Champagne Stopper

The ball top design replicates the shape of a Champagne cork. The extended base inserts 1/2" inside the bottle neck. A secure seal is obtained by snapping down the metal side clamps to under the glass muzzle ring on the bottle neck. 1-3/4" H, 1-1/2" dia. Pkg. Code: BX

Imprint area: 1" dia. Screen/Pad Print.

2248 Champagne Re-Sealer, ABS Plastic Body

Internal spring. Metal sides snap down under glass muzzle ring of Champagne bottle. Black only. 2-1/2" H, 1-1/2" dia. Pkg. Code: BU, C, PC.

Imprint area: 1-1/8" dia. Screen/Pad Print.

2254



2256



8292 Auto-Close Pour & Seal for Champagne

This stainless steel stopper/pourer automatically opens when the bottle is turned for pouring. It closes automatically when the bottle is brought upright.

3-1/2 high, 1-5/8" dia. Pkg. Code: BU.

Imprint area: 1/2" X 1/2" Metal Laser.

2248



ABS Plastic Body

new

2280



Doming Sample Chrome Plated 59

Gold Plated 68

Try our new full color doming process!

See pages 320-321

Made in Italy

2258



Light Blue 09 Doming Sample



Black 01

Burgundy 03



Stainless Steel

Made in Italy

8292



Great for Securing Premium Wines and Spirits



8293



8293 Sentry Combination Liquor/Wine Bottle Lock

Dial the three digit combo code, press the button and the lock swings open. Instructions included. 1-3/4" H., 1-3/4" dia. Pkg. Code: BX.

Imprint area: 3/4" x 1/2". Screen/pad Print

8295



8295 Combo Liquor/Wine Bottle Lock - Solid Stainless Steel

Perfect for securing premium wines and spirits. Locks up a bottle so that only the combination holder can reopen it. Instructions for using and changing the combo are included. 2-3/4" H x 2" dia. Pkg. Code: BXR (with hanger tab). 4-Color Box.

Imprint area around circumference of top rim: 3/4" X 1/4". Metal Laser.

New Shape!



8083

Black Marble



8085

Green Marble



8084

Black Marble

8083 Black Marble Stopper

8085 Green Marble Stopper

Black or green marble with tapered natural cork base. Height: 1-7/8" dia.: 1-1/2". Pkg. Code*: BU.

Imprint area on top: 1" diameter. Laser - Laser with color fill available. A variety of colors available.

8084 Black Marble Stopper, Cone Type

Cone shape with flat top. Tapered natural cork base. 2-3/4" high x 1-5/8" Pkg. Code*: BU.

Imprint area on top: 1" diameter. Laser - Laser with color fill available. A variety of colors available.

90-0202B



Promote your
business with
custom decorated
wine bottle stoppers!

Stopper sold separately.

90-0202B Velvet Pull-String Stopper Sack

Black. For special packaging of individual stoppers. 3-7/8" high, 2-7/8" wide. Pkg. Code: BU

Imprint area: 1-1/2" X 2". Laser.

8092 Acrylic Wine Glass Stopper

Acrylic miniature wine glass top, PP base. 4" H Pkg. Code: BU. Imprint area: 3/4" x 3/4" Pad Print, Laser.

8094 White Crystal Gem Bottle Stopper

Glass crystal top. 3-7/8" long. Pkg. Code: BX

Imprint area: Screen on top 3/4" x 3/4"



8160



8172

Black 01

8160 T-Top™ Bottle Stopper

8162 T-Top™ Bottle Stoppers, 3 on a Card

8163 T-Top™ Bottle Stoppers, 12 on a Card

One piece, synthetic pull-top closure eliminates taint, cork dust, and discoloration. Cap and stopper molded as one piece. Fits most bottles. Produced by a leading wine closure manufacturer. Cap Top dia. 1-1/15", 1-1/8" long. Pkg. Code: BU, C, PC

8172 Bolt-Shaped Bottle Stopper

This 100% silicone rubber stopper has an easy grip and bolt-shaped top. 1-1/2" tall, 1-1/2" dia. at top. Pkg. Code: BU, PC. Imprint area on top: 1" X 1". Screen/Pad Print.

Burgundy 03

8094



8092



Woodtop

Wine Bottle Stoppers

8082 Beechwood

8080, 8081
Beechwood



Thermoplastic Base

new
6642
Olivewood



new
8087
Dark Beechwood

Natural Cork Base

Natural Cork Base

6642 Olivewood-Top Bottle Cork

The polished genuine olivewood top is affixed to a tapered natural cork stopper. *Note: Olivewood grain is extremely variable.* 2" H x 1-1/2" dia. Pkg. Code: BU Imprint area: 1-1/4" dia. Laser, Screen.

2271 Antique Beechwood-Top Bottle Cork

Antique finished Beechwood top, polished, tapered natural cork. 2" H x 1-1/2" dia. Pkg. Code: BU Imprint area: 1-1/4" dia. Laser, Screen.

8087 Dark Beechwood-Top Bottle Cork

Dark finished Beechwood top, polished, tapered natural cork. 2" H x 1-1/2" dia. Pkg. Code: BU Imprint area: 1-1/4" dia. Laser, Screen.

8082 Beechwood-Top Plastic Stopper

Real wood top (same shape top as #8080) with a food-grade thermoplastic base. 1-3/4" H. 1-1/2" dia. top. Pkg. Code: BU.

Imprint area: 1-1/4" diameter. Laser, Screen or **ColorBlast**

new
2271

Antique Beechwood



Natural Cork Base

Porcelain Top

Wine Bottle Stopper

new
9373



Thermoplastic Base

9373 Porcelain Top Bottle Stopper

Elegant white porcelain makes this easy-grip stopper an attractive way to seal a bottle. Food-grade synthetic cork base. Stands 2-1/4" H, 1-7/8" dia. across top. Pkg. Code: BU Imprint area: 1-1/4" dia. Screen.

Silver Plated

Wine Bottle Stoppers

Beautiful Designs

Wine bottle stoppers provide an air-tight seal to prolong and preserve opened bottles of wine.

9348 Solid Heart Bottle Stopper, Silver Plated

4" high, 1-1/4" wide at top. Pkg Code: BX. Imprint area: 1/2" X 1/2". Laser.

9349 Framed Heart Bottle Stopper, Silver Plated

4-3/8" high, 1-7/8" wide at top. Pkg Code: BX. Imprint area: 1-1/4" X 5/16". Laser.

9358 Conical Bottle Stopper, Silver Plated Round Knob Top

Rubber sleeve. Measures 2-15/16" long, 7/8" dia. Pkg. Code: BX.

2275 Classico Wing Corkscrew Top (4-1/4" high)

2276 Classico Pocket Corkscrew Top (3-7/8" high)

2277 Classico Waiter's Corkscrew Top (3-1/2" high)

All stainless steel with rubber sealing sleeve. Pkg. Code: BX Imprint area: 5/16" X 1/8". Laser.



9348

9358

Stainless Steel

Wine Bottle Stoppers



2275

2277

2276

These wine bottle stoppers provide
an air-tight seal!

9359



9359 Oval Top Bottle Stopper, Silver Plated

Good weight, silicone base. 4-7/8"H, 2" wide at the top.
Pkg. Code: BX. Imprint area: 1-1/2" W x 3/4" H. Metal Laser.

9360



9360 Plaque Top Bottle Stopper, Silver Plated

Weighty with good silicone base. Plaque above has an
adequate imprint area. 4-5/8" H. 1-1/2" wide at the top.
Pkg. Code: BX. Imprint area: 1-1/4" W x 3/4" H. Metal Laser.

8079



Laser
Engraved
Sample

8079 Tappo Bottle Stopper, Stainless Steel

Rubber seal above tapered metal stem. 3" x 1-1/8".
Pkg. Code: BX.

45° diagonal cut at top allows for a 1" X 7/8" imprint. Metal Laser.

8077 Zocco Rubber Bottle Stopper, Chrome Plated Top

Flexible, tapered rubber base seals any wine bottle.
Metal part sits flat on table. 3-3/4" long. 1" wide
at top. Pkg. Code: BX, C, PC Diagonal cut on the metal top
allows for a large imprint area: 1" X 7/8". Metal Laser.

9374 Zocco Rubber Bottle Stopper, Metal Plated Top

Same as 8077. Now available in Gold (68), Copper
(66) and Black Chrome (79). Pkg. Code: BX, C, PC
Diagonal metal top allows for a large imprint area: 1" X 7/8". Laser.

new
9374



8077



Copper 66

Gold 68

Black Chrome 79

8169 Cork Saver™ Bottle Stopper

This unique stopper stores a wine bottle
cork into the hollow opening at the top. Zinc
alloy, chrome plated and ABS with food-grade
silicone base (cork not included). Stands 2-5/8"
high. Pkg. Code: BX, PC.

Imprint area on s/s body. 3/4" x 3/4". Metal Laser

8169

Holds Cork!



Beautiful Stylish Bottle Stoppers

new

8288

Metallic Black
01

Metallic Burgundy
03

Metallic Red
20



Napa

Laser Engraved
Sample

Solid Aluminum alloy top and rubber
material are durable and sturdy

8288 Mega Bottle Stopper

Elegant and sizeable, this big bottle stopper
has a long tapered bottle insert (1-7/8" long)
and a solid aluminum top (1-5/8" dia., 5/8"
deep). Fits all bottles and inserts and extracts
easily with good-grip, oversized top. 2-1/2"
overall height. Weight: 3.2 oz. Pkg. Code: BU.

Imprint area: 1-1/4" x 1-1/4". Laser

9356



9356 Heavy Weight Bottle Stopper, Silver Plated Top

Natural cork stopper. Oversized 6 oz. top has
a weighty feel. Attractive. Measures 2-5/8" long,
2" dia. Pkg. Code: BX. Imprint area: 1-1/4" dia. Laser.

new!

Laguiole Wine Stoppers

These are quality stoppers that have a "weighty" feel (about 3 ounces). These stoppers will be appreciated as they are in a class of their own. They come in four (4) different natural wood top models. The bottle insert portion is made of stainless steel with two rubber sealing rings near the top. Attractive Laguiole 2-pc beige gift box. Great gift item. 4" high. Pkg Code: BXR.

Imprint area: 1/2"x1/2" diameter. Laser.

3413 Rosewood Top

3414 Beechwood Top

3415 Olivewood Top

3416 Walnut Top



Rosewood

Beechwood

Olivewood

Walnut

All Laguiole Wine Stoppers Come in a Beautiful Gift Box!



3403SET

Compliments Laguiole Waiter's Corkscrew

See Page 27

Decorate Any Bottle Stopper With Your Logo On It!

2267



new

2268



2267 Laser Engraved

2267 Rosewood Flat-Top Cone Stopper

2-1/8" dia., 3-3/8" long. Pkg. Code: BX.

Imprint area: 1-1/4" dia. Laser.

2268 Rosewood Flat-Top Plastic Cork Stopper (New and Improved)

2-1/8" dia., 2-1/2" long. Pkg. Code: BX.

Imprint area: 1-1/4" dia. Laser.

2272



2270



3425



2270 Rosewood Cone Wine and Champagne Stopper

1-7/8" long. Pkg. Code: BX.

Imprint area: 1/2" X 1/2". Laser.

2272 Rosewood Handle Corkscrew Cone/Stopper Combo - 2 Pieces

4" long, 3-1/4" across handle. Pkg. Code: BX.

Imprint area: 1-1/2" X 3/8". Laser.

3425 Laguiole Cone-Type Bottle Stopper

Wood inlaid handle. Long, tapered rubber surface (1-1/2") 3-7/8" high, 2-1/2" wide at handle.

Pkg. Code: BX. Imprint area on handle: 5/8" X 1/4". Laser.



8090 Loop Wine Bottle Stopper and Collar

Rubber bottle stopper fits any bottle. In addition, top loop doubles as a drip collar when placed around the neck of the bottle while pouring. 4" H.

Pkg. Code: BU, PC. Imprint area: 1" x 3/8" Pad Print.

new
8099



8099 Flip-Top Stopper w/ Stainless Steel Base

A compression style stopper with a large ABS handle that activates when pushed in either direction. 3-1/4" high, 1-1/2" dia. Across base. Pkg. Code: BU, PC.

Imprint area: 1" x 3/8" Pad Print or Laser.



8088 Bottle Stopper, Plastic Lever

8089 Bottle Stoppers - Two (No. 8088) on a Card

Expansion-type, snap down stopper for all bottles. 3-1/2" long (open). Pkg. Code: BU, C, PC (8089)



8095 Bottle Stopper, Metal Lever

8096 Bottle Stoppers, Metal Lever - Two (No. 8095) on a Card

Expansion-type, snap down stopper for all bottles. 3" long (open). Bottle cap lifter built into the lever. Pkg. Code: BU, C, PC (8096)



new
2278

Made in Italy

9 Colors Available



2278 Italia Bottle Stopper - High Grade Rubber Seals

2279 Italia Bottle Stopper - Two (No. 2278) on a card

Snap-down bottle stopper works smoothly and efficiently. Bottle cap lifter built into the lever. Restaurant grade. 9 colors. Pkg. Code: BU, C, PC (2279)

8093 Cappello Bottle Stopper

This expansion-type stopper has an 18/8 brushed stainless steel base. The zinc alloy lever is pearl chrome plated. A rubber grip is inserted into the top of the lever. Stands 4" high (lever up), 1-5/8" dia. at base. Gift boxed. Pkg. Code: BXR. Imprint area: 1" x 1". Metal Laser.

8167 Top Hat Bottle Stopper

Expansion-type stopper. TPR internal rubber insert. 3-5/8" high (lever up) 1-5/8" dia. at base. Black. Pkg. Code: BU, PC. Imprint area: 3/4" x 3/4". Screen/Pad Print.



8091 Crown Bottle Stopper

This attractive expansion-type stopper has a translucent crown. Cap lifter built into the stainless steel lever. 2-1/2" H, 1-1/8" dia. Pkg. Code: BU, C, PC. Imprint area: 3/4" x 3/4". Pad Print.

8168



8168 with Screen Imprint

8168 Super-Twist & Seal Wine Stopper

Just a 1/4 twist and the stopper locks and seals into the bottleneck. Stands 2" H, 2-3/4" W at top. Black. Pkg. Code: BU, PC

Imprint area: 1-1/2" x 1/2" on face of handle. Screen/Pad Print.

Flex-Seal

Bottle Stoppers



Perfect Seal!



14 exciting colors to choose from!

8165



See Page 321
For Full Color Doming.
Doming or screen printing
Available



8165 Flex-Seal Bottle Stopper

8166 Flex-Seal Bottle Stoppers - Two (No. 8165) On a Card

Rigid ABS top. The flexible base is a non-toxic, environmentally safe thermoplastic rubber. Great Sealer! 14 colors to choose from! Colors (clockwise): Black-01, Gold-68, Silver-67, White-24, Dark Blue-05, Turquoise-10, Grape-48, Raspberry-22, Baby Pink-36, Burgundy-03, Red-20, Mango Orange-44, Lemon-40, and Lime-16. 2-5/8" high, 1" dia. at top. Pkg. Code: BU, PC (8166) Imprint area: 9/16" dia. Screen and Doming

2273 Premium Flex-Seal Bottle Stoppers

2274 Premium Flex-Seal Bottle Stoppers, Two (No. 2273) on a card

This premium version of Flex-Seal features special plated plastic tops that are handsome shiny metal in appearance. Two versions available. Chrome and Gold. The bases are all black. The flexible base is a non-toxic, environmentally safe thermoplastic rubber. 2-5/8" high. 1" dia. at top. Pkg. Code: BU, PC (2274) Imprint area: 9/16" dia. Screen or Laser

Super Flex-Seal™

Bottle Stoppers

8164



Premium Flex-Seal™

Bottle Stoppers

new
2273



8164 Super Flex Seal™ Bottle Stopper

The flexible thermoplastic is similar to #8165 but the upper casing allows the cap to completely cover the bottle top. Push to insert. Twist to extract. Rigid ABS top allows imprinting. 1-1/8" H, 1-3/4" dia. across top. Pkg. Code: BU, PC. Imprint area: 1" x 1". Screen/pad print.

8097 Aluminum-Top Bottle Stopper

8098 Aluminum-Top Bottle Stoppers, Two (No. 8097) on a Card.

The high-quality, plated aluminum color tops and food-grade synthetic cork based stoppers make this an ideal tight fitting bottle stopper. Stands 1-1/4" H, 1-1/4" dia. across top. Pkg. Code: BU, PC (8098). Imprint area: 1" dia. Laser and Doming

new! Aluminum-Top

Bottle Stoppers

8097



Laser Engraved Sample

17 Exciting Colors Available!



WINE ACCESSORIES

DropStop® the original®

Pouring wine without
spilling a drop

Easy to use.



8065



8065 DropStop® Wine Pourer, Glossy Finish

8065M DropStop® Wine Pourer, Matte Finish

Stop wine drips with this compact, efficient, easy to use wine service tool. Thin and flexible silver foil mylar disc is rolled up and inserted into the bottle neck to stop wine from dripping. Imprint with your advertising message in up to four colors. Food safe FDA approved colors. 3" dia. Pkg. Code: BU U.S. Patent. Imprint area: 3" dia., Laminated full color. Silver or Gold foil and other colors available with imprint. Matte finish also available (8065M).



8062 All-In-One DropStop® (DropStop® & Neck Hanger)

All-In-One Neck Hanger is essentially a DropStop® (8065) integrated with a neck hanger with instructions—both made in the same material. A simple perforation allows you to separate the DropStop® from the hanger and use the disc in the bottle. Overall dimensions: 5-1/8" X 3". Pkg. Code: BU. Imprint area: Same as 8065

Create Your Own Personalized Pourer Design Yours Today!

8065

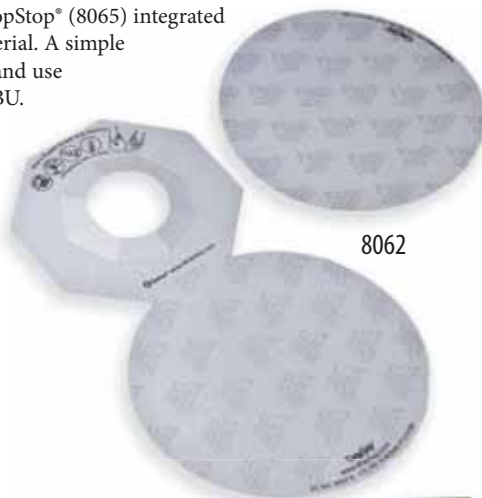
Silver Foil
with imprint



8065M Matte

finish imprint

8062



8065

Full coverage
Custom Imprinted.

8065 Gold Foil
with imprint

8062 Custom
Imprinted.

**They Make For A
Great Wedding Favor**





8065P

8065P Folding Card for DropStop®

Full-color Gift Card with instructions. Holds 1-3 Dropstops. Pkg Code: BU
See pricelist for imprint information.

8065X Parchment Envelope Only

Made of parchment paper with printed instructions on one side. Holds 1-5 Dropstops. Pkg. Code: BU.



8065P



8065X

8065N Neck Hanger Card for DropStop®

Full-color Hanger Card for Wine Bottles. Pkg. Code: BU
See pricelist for imprint information.

8063 Mini Disc Holder for DropStop®

Hard Plastic Case holds up to 20 Dropstops® and Includes instruction card. Pkg. Code: BU.

8065C Cellophane Wrap with Instructions

8065I Cellophane Wrap Only

Factory Cellophane individually. Pkg. Code: BU.
See pricelist for imprint information.

8068 DropStop® Sleeve

Semi-transparent notched vinyl envelope. Holds from 1-25 DropStop® discs. 3-1/2" x 3-1/2". Pkg. Code: BU.
Imprint area: 2-1/2" X 2-1/2". Screen/Pad Print.

8064 Two DropStop® Wine Pourer on a blister card

Pkg. Code: C, PC.

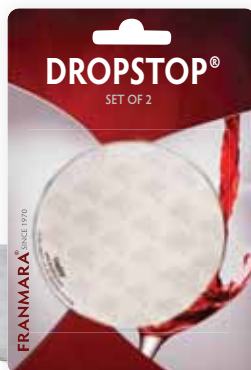
8066 Two No. 8065 on a Solid Rack Card

Factory Packaging. Pkg. Code: C.

8067KIT DropStop® Starter Kit with Stand

Contains 48 each C-8066 plus (1) wood base Stand and display card. 16-1/4" high (with card on top). Pkg. Code: BX.

8064



Retail Packaging Options

8065I



8065C



8068



DropStop®

the original®

Custom Promotional Packaging Options

8063





Drip Free!



8215 Drip-Free Pourer And Stopper

Second outer spout eliminates drips. Breather tube, rubber base and snap-on cap make this a complete pourer/stopper set. Black only. 3-1/2" high (includes cap), 1-1/2" dia. Pkg. Code: BU, PC Imprint area: on base: 1/4" x 1/4", vertical on cap: 1/2" x 1/2". Screen/Pad Print.

8221 Clear-Top Drip-Free Pourer And Stopper

Second outer spout eliminates drips. Breather tube, rubber base and snap-on cap make this a complete set. Black base. 3-1/2" high (includes clear cap), 1-1/2" dia. Pkg. Code: BU, PC Imprint area: on base: 1/4" x 1/4", vertical on cap: 1/2" x 1/2". Screen/Pad Print.



8230



8230 Snap-Seal Pourer With Lid

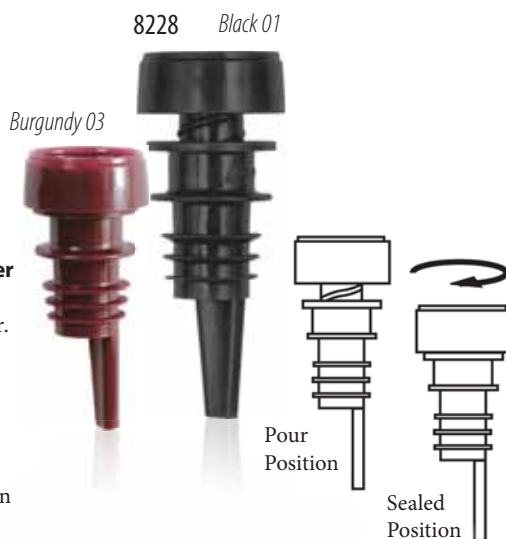
Rounded conical shape top snaps closed over the pourer for easy, clean storage. Good for liquor, wine, olive oil, etc. Thermal plastic rubber bottle insert base (TPR) in black. 3-1/4" high overall. Pkg. Code: BU, PC. Imprint area: 1" x 1/2". Screen/Pad Print.

8285 Lift n' Pour Stainless Steel Pourer/Stopper

Large lever activates a "ball" stopper when closed. When raised, the passageway opens for a clear pour. Stands 3-3/4" high, 1-5/8" wide. Pkg. Code: BU, C, PC Imprint area: across front 7/8" x 1/4". Metal Laser.

8228 Twist-Pour™ Stopper/Pourer

Seal an unfinished bottle of wine with a quick twist clockwise. With a half twist counter-clockwise, open for a no-drip pour. 2-3/4" long, 1-1/4" dia. Pkg. Code: BU, PC.



8226 Pop-Up Pourer and Sealer, Black

Strong ABS body. Flexible neoprene bottle insertion part. Fits tightly into the bottle. Grip the top crown and pull straight up 1/4". This opens a 1/4" pouring hole at the top. Breather tube inside the bottle gives you a smooth pour. Press top crown down to seal. 3" high, 1-1/2" wide. Pkg. Code: BU. Imprint area: 1/4" x 3/8" on collar. Screen/Pad Print.



7830 Champagne Saver and Pourer

Preserves bubbles and taste for up to a week. When pouring Champagne, inevitable drips will no longer stain your tabletop. 3" high, 2-1/4" dia. Black only. Pkg. Code: BXR. Imprint area on curved side: 3/4" x 1". Screen /Pad Print.



AUTO-CLOSE POURERS



8290 Auto-Close Pour & Seal for Wine, Black 8291 Auto-Close Pour & Seal for Wine, Burgundy

This stainless steel stopper/pourer (with ABS collar) automatically opens when bottle is turned for pouring. It closes automatically when the bottle is brought upright. A counter weight extending 2-1/2" into the bottle affects the auto-close feature. 2-7/8" high, 1-5/8" dia. Pkg. Code: BU. Imprint area: 1/2" x 1/2" Screen/Pad Print.

8292 Auto-Close Pour & Seal for Champagne

All stainless steel with function same as No. 8290 above. 3-1/2" high, 1-5/8" dia. Pkg. Code: BU. Imprint area: 1/2" x 1/2" Metal Laser.

8289 Auto-Close Dripless Pourer & Sealer for Wine

This version of the Italian made Auto Close Pour & Seal has the added feature of a no-drip pouring spout. The special double-edged, clear spout enhances neat-and-clean pouring. In addition, a counter-weight lets it open automatically when the bottle is brought upright. Stands 4-3/8" tall, 1-5/8" dia. Pkg. Code: BU. Imprint area: 1/2" x 1/2" Metal Laser.



Heads-Up! Aerator Bottle Pourer

8710 Owl, 8712 Dog, 8714 Reindeer, 8716 Horse, 8718 Rooster, and 8720 Pig.

These lively theme pourers can dress up a party. Fits most bottles. Good, steady aerated pour. Made of food safe zinc alloy, nickel plated. Heights range from 3-1/2" to 4-1/2" high. Pkg. Code: BXR clear plastic box.

90-0500 Curved Wood Display for Heads-Up! Pourers

This display neatly shows all Heads-Up! Pourers at once. 3-3/4" H, 9" W, 2" deep. Pkg. Code: BU

Made of Food Safe Zinc Alloy,
Nickel Plated. Good,
Steady Aerated Pour!





7777

7777 VacuVin® Crystal Wine Servers (Two on a Card)

Non-drip pourer. Pours smoothly. Hard plastic material. Two pieces on a blister card. 2-3/4" long. Pkg. Code: C, BU (Only if lasered). Imprint area: 1/2" x 1". Laser.

9338 Pour n' Seal Bottle Stopper/Pourer

Stainless Steel. Base stays in bottle. Top inserts into base for easy-twist openings 2" high. Pkg. Code: BX. Imprint area on top: 3/8" dia. Metal Laser.

9339 Bottle Pourer With Stopper, Chrome Plated

Three ring rubber base on pourer. Stopper has a rubber base. 2-3/4" high, 1-1/4" dia. Pkg. Code: BX, C, PC. Imprint area on top: 1/2" x 1/4" Metal Laser.



9338



9339

8280 Wine Filter Pourer

This self-contained filter pourer is fitted with an ultra-fine screen mesh around a hollow core. Filters out cork particles and sediment. Great for vintage port. Captive plastic lid allows for convenient storage. 4-1/8" high, 1-1/2" dia. Pkg. Code: BU, C, PC.

8223 Octo-Vent Aerator Pourer

Oxygenates the wine as you pour. A special aeration design in the form of a small vent hole increases the speed of wine flow. In addition, an 8-hole screen further increases oxygen flow into the wine. 3-3/4" long. Pkg. Code: BU. Imprint area on clear top: 1/2" x 1". Screen/Pad print or Laser.



8280

new
8223

8222

8222 Air-Flow Pourer, Strong Plastic

Three partitions (Tri-Valve) create bubbles as liquid is poured from bottle. Medium flow. 3-3/4" H, 1" dia. Pkg. Code: BU, PC. Imprint area: 3/4" W x 1-1/4" H. Screen/Pad Print or Laser.



8223

8222

8 Air Holes**Tri-Valve**

White 24

**For Regular
Wine Bottles**8232 / 8233
2-Piece

Black 01

Burgundy 03

Red 20

**For Screwtop
Wine Bottles**8234
2-Piece

Green 13

8220

**8220 Dripless Pourer™ and Stopper, Stainless Steel**

Stops wine from dripping when poured. Pour without worrying about stained table linens. Great for restaurants, tasting rooms, and home use. Silicone sleeve adjusts to inside of all bottle necks. Includes new stopper made of food-safe rubber. 1-1/4" high, 1-1/4" dia. at top. Pkg. Code: BX/PC (Hang Box).

Imprint area: 1/2" x 3/16". Laser.

8219

**8219 Slider Dripless Pourer™ with Lid (Patent Pending)**

A dripless pourer modeled after our 8220 stainless steel pourer. But this ABS version comes with a horizontal swing-away lid. One flick movement to the right (or left) and the contents of the bottle are ready to store or pour. Lid snap locks in closed position and also snap locks in the 180 degree open position. 2-7/8" H, 1-1/4" dia. at top.

Pkg. Code: BU, PC.

Imprint area: 7/8" dia. Hot Stamp or Screen/Pad Print.

7740



7741



8224



Black 01

Clear Smoke 02

8224 Perforated Flow Pourer

Air enters into 32 perforated holes in the bottle insert. Bottom is sealed so fluid and air must go through the holes. 5-1/2" H, 1-1/4" W.

Pkg. Code: BU, PC. Imprint area: 1/4" x 1/4" H. Screen/Pad Print.

7740 Selection Decanting Pourer - The Original**7741 Premium Decanter Pourer, Stainless Steel**

An original decanting pourer oxygenates the wine as you pour. You can see an hourglass-like narrow neck inside the pourer, called a venturi pipe. This increases the speed of wine flow, creating low pressure that draws in air through the small vent hole. Further, a special stainless screen disperses the flow before it leaves the pourer. 3-3/4" long.

Pkg. Code: BXR

Imprint area: 1/2" W x 1" H. Screen/Pad Print or Laser.

7743



Sip Me!

8216

**7743 Selection Decanting Pourer and Vacuum Stopper**

This set holds the #7740 Pourer plus a vacuum stopper. The built-in pump removes air from the bottle for storage. Pourer 3-3/4" H., Stopper 3-1/8" H.

Pkg. Code: BXR

Imprint area on clear top of pourer: 1/2" W x 1" H. Screen/Pad Print or Laser.

Gold 68

new!

Silver 67



8217

8216

8217

8217

Pour Me!

**8216 Champagne & Wine Sipper/Pourer, Black Only****8217 Champagne & Wine Sipper/Pourer, Gold or Silver**

A classy way to sip Champagne or wine from a small bottle (split) or a full sized bottle* has become quite the festive trend lately. Parties or weddings become more exciting and elegant for all. It can also be used as a dripless pouring funnel. Made of plastic, silicone+pp (food grade). Certification: FDA, SGS, Prop. 65. 3-1/4" tall.

Pkg. Code: BU Imprint area: 1-1/2" W x 5/8" H. Screen/Pad Print.

*Note: May not fit all bottles especially screw top bottles.

WINE-STONE™

WINE AERATOR

7728 Wine-Stone™ Wine Aerator

Softens the tannins with the Wine-Stone and bring out the natural flavor inherent to the wine. The air valve is food safe. Comes with a wall hanger. 12-1/4" L, 2-1/8" W at pump. Pkg. Code: BXR. Imprint area on metal rim around pump: 1/4" x 1/2". Laser.

7720 Vino Dose™ Aerator/Dispenser

The double task of aerating and measuring the wine is done easily with this acrylic aerator/dispenser. There are graduated fill lines ranging from 1/2 oz. to 4 oz.

5-1/4" wide (on the bottle), 3-3/4" high. Pkg. Code: BXR.

Imprint area on face below logo 1-1/4" X 1". Laser.



7720

Graduated fill lines.



Vino Dose™ Measuring and Aerating

7728



Just 2 or 3 pumps will enhance the natural flavor of wine!

4806



Clef du Vin®

Wine Enhancers

The Clef du Vin® is completely safe and effective because nothing is introduced into the wine - The wine simply reacts to the embedded metals and ages in moments instead of years! Simply pour yourself a glass of wine, dip the Clef du Vin® into the glass, taste and compare results. Re-dip the Clef du Vin® at one second intervals until the wine reaches the phase you enjoy the most. Important to keep your dips at 1 or 2 seconds each, so as to not over-age the wine.

4806 Clef du Vin®, Travel Model, Retail Box

Travel model comes with plastic cover and instruction. 5-3/4" L x 3/4" Pkg. Code: BXR

Imprint area on outer case: 2" x 1/2". Pad Print. Imprint area on Clef du Vin: 2" x 1/2". Metal Laser



4806

Travel Model

Simple and Elegant Design

Electronic

Wine Aerator & Dispenser

Oxidizes, Decants and Dispense in One!

7730 Electronic Wine Aerator & Dispenser

This is a portable electric magnetic wine aerator. It brings wine and air into full contact for perfectly aerated wine. Made of food grade eco- friendly, non-toxic ABS material. A stainless steel expandable tube inserts into the wine. Equipped with a USB rechargeable Li-ion battery. Full charge: 3-4 hours which will decant about 100 bottles. Package includes: a wine aerator, a USB cable, a stainless steel pipe (extends 12-3/4"), a storage bag and a user manual. Body stands 6-1/2" tall, 3-1/2" dia. Pkg. Code: BX

Imprint area: 2-1/2" x 1" dia. Pad Print only

new
7730



Retractable Stainless Steel pipe



4-3/4"

12-3/4"





7716

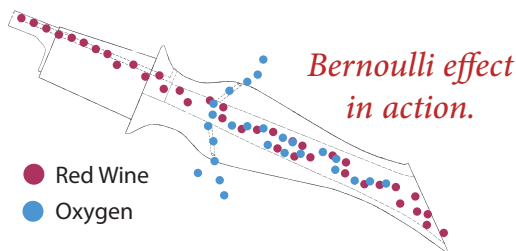
7717

**Removable,
top lid
connection
improved**

7716 Decantus™ Aero Wine Aerating Pourer, Clear Model

7717 Decantus™ Aero Wine Aerating Pourer, All Black Model

Utilizes the Bernoulli (Swiss scientist) effect where the reduced pressure of a stream of fluid (wine) draws an air flow (blue in illustration below) through diagonal thin tubes inside the DECANTUS™.



*Bernoulli effect
in action.*

- Red Wine
- Oxygen

Experience softer tannins, increased bouquet and enhanced flavor. Removable lid for covering contents for restaurants, wine bars, and winery tasting rooms. 7-1/4" long. Pkg. Code: BXR (with hanger tab). Imprint area across top: 1" X 3/16". Screen/PadPrint or Laser.

7718DIS Decantus™ Aero Wine Aerating Pourers Display Set, Clear Model

Contains 12 each 7716 Decantus™ Aero Clear and 4-color cardboard display with plastic tray. Counter space used: 10-1/2" wide X 8-1/2" deep.

7719DIS Decantus™ Aero Wine Aerating Pourers Display Set, Black Model

Contains 12 each 7717 Decantus™ Aero All Black and 4-color cardboard display with plastic tray. Counter space used: 10-1/2" wide X 8-1/2" deep.

7723 Decantus™ Aero Primo Set, Clear Model

7724 Decantus™ Aero Primo Set, Black Model

Set includes DECANTUS™ AERO WINE AERATING POURER, a VELVET STORAGE POUCH for easy travel, and a CLEANING BRUSH for those hard to reach places.

Two-Piece Gift Box.

Pkg. Code: BXR.

Imprint area across the top:
1" x 3/16". Pad Print or Laser.



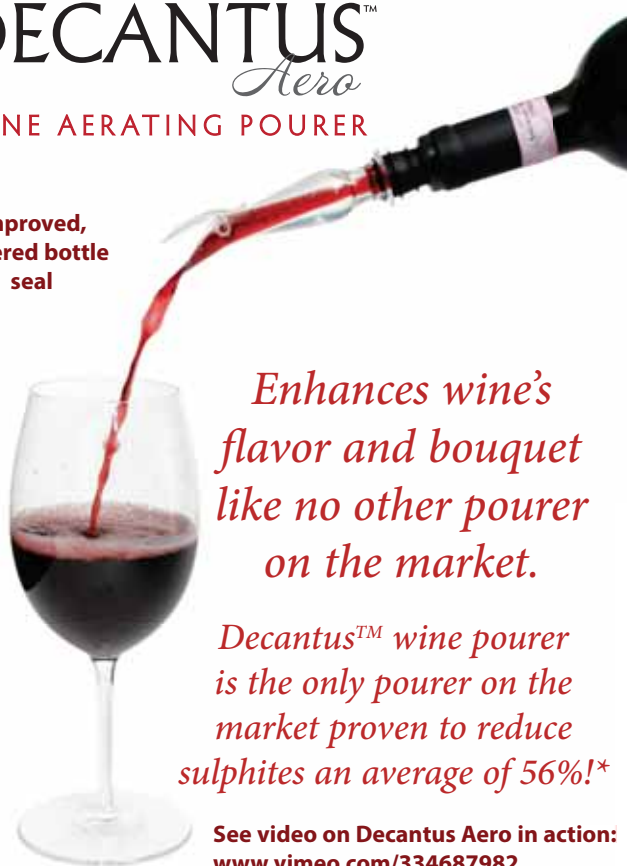
7723



7724

DECANTUS™ *Aero* WINE AERATING POURER

**Improved,
tapered bottle
seal**



*Enhances wine's
flavor and bouquet
like no other pourer
on the market.*

*Decantus™ wine pourer
is the only pourer on the
market proven to reduce
sulphites an average of 56%!*
See video on Decantus Aero in action:
www.vimeo.com/334687982*

See video on Decantus Aero in action:
www.vimeo.com/334687982



7718DIS/
7719DIS

U.S. & International Patented

Decantus Deluxe



DECANTUS™

A UNIQUE, BY-THE-GLASS
WINE DECANTING SYSTEM

Get greater Value and
Enjoyment from your next
bottle of wine with DECANTUS.™

Wine needs to react with air to
reveal its fullest flavor and bouquet

The DECANTUS™ utilizes the Bernoulli (a Swiss scientist) effect where the reduced pressure of a stream of fluid (wine) draws an air flow through diagonal thin tubes inside the DECANTUS™. The wider opening on top and larger liquid capacity of the top reservoir bowl makes pouring into DECANTUS™ much easier than with the Vinturi. Wine travels faster through the DECANTUS™ without a whirlpool effect, because of the vertical planar insert. Reduces free sulphites an average of 56%* (see www.decantus.net). The "froth" from DECANTUS™ has finer bubbles giving smoother aeration than any other aerator on the market. Made with FDA approved materials.

DECANTUS™

WINE AERATOR STAND

7709 Decantus™ Table Stand, Acrylic Base

7710 Decantus™ Table Stand, Wood Base

With the DECANTUS™ Table Stand, you've got a simple, hands-free platform for pouring wine through the DECANTUS™ Deluxe or DECANTUS™ Slim. Protective plastic tubing at top to prevent scratching of the Decantus™. Stands 13" high, 6 1/4" wide at the oval base. Pkg. Code: BXR.

Imprint area on wood base: maximum 4" X 3" or smaller around the rim. Laser.

BOX INCLUDES: STAND ONLY (No Decantus™ Aerator included).

Decantus™
Slim

Wines With Sediment



Sediment Screen
can be used on most
decanters.

7788 Decantus™ Sediment Screen (Stainless Steel)

When sediment is detected in a wine bottle, insert the sediment screen into the top of the DECANTUS™. Serve wine through the DECANTUS™ by the glass or pour it slowly into a decanter. Sediment Screen available also with 7702 Decantus™ Classic Set and 7711 Connoisseur Set. 2-3/4" dia., 3/4" high. Pkg. Code: BU, PC.



7709

7710

Patents in USA and other countries.

See video on Decantus™ in action: www.vimeo.com/335490505



7702



DECANTUS™ Deluxe
Aerator & Heavy Base



Velvet Storage
Pouch



Cleaning
Brush



Sediment Screen

DECANTUS™ Classic

WINE AERATOR

7702 Decantus™ Classic 5-Piece Set

A must-have for those enthusiastic about wine. The DECANTUS™ Deluxe has some serious curves. Sinuous and graceful, it has two handles for easy handling while pouring. Stands 5" high and 4 1/2" wide at the handles. The Sediment Screen comes into play when sediment is detected in a wine

bottle (see illustration lower, left corner pg. 96). Pkg. Code: BXR.

Imprint area: on opposite side of DECANTUS™ logo, below thin tube entrance, or on the side 1-1/4" X 1". Laser. Also on black base: 1-1/2" X 1-1/4". Screen.

*Decantus™ wine aerator is the only aerator on the market proven to reduce sulphites an average of 56%!**



7711

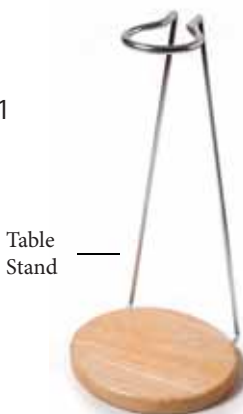


Table
Stand



DECANTUS™ Deluxe
Aerator & Heavy Base



Velvet Storage
Pouch



Cleaning
Brush



Sediment Screen

DECANTUS™ Connoisseur

WINE AERATING SYSTEM

7711 Decantus™ Connoisseur 6-Piece Set

A must-have for those enthusiastic about wine. See 7702, above for DECANTUS™ Deluxe description. The Sediment Screen comes into play when sediment is detected in a wine bottle (see illustration lower, left corner pg. 96). Pkg. Code: BXR.

Imprint area: on opposite side of DECANTUS™ logo, below thin tube entrance, or on the side 1-1/4" X 1". Laser. Also on black base: 1-1/2" X 1-1/4". Screen. Imprint area on wood base of stand: maximum 4" X 3" or smaller around the rim. Laser

U.S. Patented & International Patent Pending



The Decantus™ Deluxe was designed in the shape of the classic amphora vase used by the ancient Greeks and Romans to carry and store wine over 3,000 years ago!



7704



DECANTUS™ Slim
Aerator & Heavy Base



Velvet Storage
Pouch



Cleaning
Brush

7715



DECANTUS™ Slim

WINE AERATOR

7704 Decantus™ Slim 4-Piece Set

The DECANTUS™ Slim is a streamlined version of the DECANTUS™ Deluxe, but without the handles. Stands 5" high and 2-3/4" wide at top. Pkg. Code: BXR.

Imprint area: on opposite side of DECANTUS™ logo, below thin tube entrance, or on the side 1-1/4" X 1". Laser. Also on black base: 1-1/2" X 1-1/4". Screen.

7715 Decantus™ Point of Purchase Display

Hands-on POP display includes a DECANTUS™ Deluxe Aerator mounted in the center of a fixed base. Reel-in auto-retractable nylon cork allows product examination. Display card (7-1/2" W x 12" H) mounts on back. Base: 7-1/2" wide x 10" deep. Pkg. Code: BX



7706 Box



Storage Pouch



DECANTUS™ Deluxe Aerator & Light Plastic Base



7705 Box



Storage Pouch



DECANTUS™ Slim Aerator & Light Plastic Base

7705 Blister



Storage Pouch

DECANTUS™ Slim Aerator & Light Plastic Base



DECANTUS™ To-Go WINE AERATOR

7706 Decantus™ To-Go Set, With Handles (Box only, No Blister)

This compact box contains a Decantus™ Deluxe Aerator, light plastic table stand and black cloth storage pouch. Pkg. Code: BXR.

Imprint area: on opposite side of DECANTUS™ logo, above thin tube entrance, or on the side 1-1/4" X 1". Laser. Also on black base: 1-1/2" X 1-1/4". Screen.

7715 Decantus™ Point of Purchase Display

Hands-on POP display includes a DECANTUS™ Deluxe Aerator mounted in the center of a fixed base. Reel-in auto-retractable nylon cork allows product examination. Display card (7-1/2" W x 12" H) mounts on back. Base: 7-1/2" wide x 10" deep. Pkg. Code: BX



7715

DECANTUS™ To-Go WINE AERATOR

7705 Decantus™ To-Go Set, No Handles

This compact box contains a Decantus™ Slim Aerator, light plastic table stand and black cloth storage pouch. Pkg. Code: BXR.

Imprint area: on opposite side of DECANTUS™ logo, above thin tube entrance, or on the side 1-1/4" X 1". Laser. Also on black base: 1-1/2" X 1-1/4". Screen.



DECANTUS™ To-Go WINE AERATOR

7705BL Decantus™ To-Go, No Handles (Blister)

Same as 7705 above except packaged in a blister pack for rack display. Pkg. Code: PC.

Imprint area: on opposite side of DECANTUS™ logo, above thin tube entrance, or on the side 1-1/4" X 1". Laser. Also on black base: 1-1/2" X 1-1/4". Screen.

AntiOx

STOP OXIDATION SYSTEM

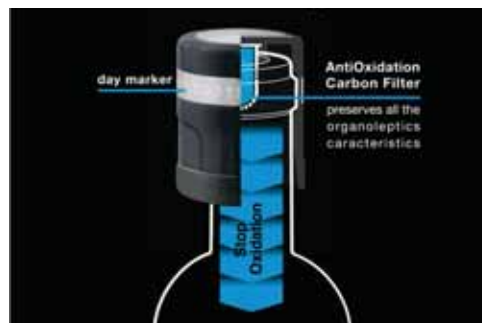


Day 1 2 3 4 5 6 7 8 9 10



10 days preserving all the organoleptic characteristics

Preserves Wine Much Longer Than Other Preservers!



7840 AntiOx® Deluxe Carbon Filter Wine Preserving Stopper

This patented system avoids oxidation of wine inside an opened bottle. The silicone based stopper contains an active carbon filter inside. This effectively interrupts oxygen interacting with the wine. Made in Spain and recommended by the Spanish Academy of Sommeliers. Equipped with a day marker. This consists of a metal ring around the circumference to be turned to the day the wine was closed (31 day indications). For optimal performance the bottle should be stored in an upright position. Stands 1-7/8" H x 1-1/2" dia. Pkg. Code: BXR (with hanger tab).

Imprint area on top: 3/4" dia. Screen and *ColorBlast*

7841 AntiOx® Standard Carbon Filter Wine Preserving Stopper

This model functions the same way the 7840 AntiOx Deluxe Stopper works but it does not have a day marker metal ring around the circumference for the day the wine was closed. Stands 1-5/8" H x 1-1/2" dia. Pkg. Code: BX

Imprint area on top: 3/4" dia. Screen and *ColorBlast*

7840 Deluxe

Date Indicator

AntiOx
carbon filter

7841 Standard

AntiOx
carbon filter



7842SET AntiOx® Deluxe Carbon Filter Wine Preserving Stoppers (6pcs.)

A six piece quantity pack, of the 7840. Small storage bag included. Packaged in a clear plastic Pulltex® display box suitable for rack display. Box size (7-1/4" x 4-3/4")

7843DIS AntiOx® Deluxe Carbon Filter Wine Preserving Stopper POS Retail Pack (9 pcs.)

This Retail Pack contains: (1) A counter-top display with 4 pcs. #7840 AntiOx stoppers plus 4 pcs. back-up stock of the #7840, (2) plus 1 AntiOx stopper in a small box to be used as a "hands-on" demo piece alongside the display.



7843DIS

AntiOx
STOP OXIDATION SYSTEM

**Save your open wine
for 10 days**

7842SET



WINE ACCESSORIES

new

7770

Wine Saver

Wine Preservation



Black 01

White 24

7773 (Set of 10)



7771 (In Blister Pack)



7770 VacuVin® Vacuum Wine Saver, Blister Pack

Includes one pump and one stopper. Pump: 5" X 2-7/8" across top; stopper: 1-3/4" long. Colors: White and Black. Pkg. Code: C.

7771 VacuVin® Vacuum Wine Stoppers, Blister Pack

Includes two stoppers. Can be used with Product No. 7775 also. Pkg. Code: C.

7772 VacuVin® Vacuum Wine Saver, Gift Pack

Includes one pump and two stoppers. Colors: White and Black. Pkg. Code: BXR.

Imprint area: 2-1/4" X 1". Screen/Pad Print.

7773 VacuVin® Vacuum Wine Stoppers, Set of 10

Bulk pack in poly bag. Pkg. Code: BU.

7774 VacuVin® Wine Stoppers, Box of 3, Assorted Colors

Includes three different color wine stoppers in purple, light blue and pink. Pkg. Code: BXR (with hanger tab)

7775 Concerto Wine Saver

A special indicator will click when the correct vacuum level is reached. Package consists of one pump and four stoppers. 5-3/4" high, 3" dia. at base.

Pkg. Code: BXR. Imprint area: 2-1/4" X 1". Screen/Pad Print.

7778 VacuVin® Wine Server and Saver

This set includes a vacuum pump and two no-drip pourers. Each pourer has a manually operated, open-close stopper. When storing wine the pump fits over the stopper. Pump 5-1/8" high, stopper 3-1/8" tall. Pkg. Code: BXR.

Imprint area: 2-1/4" X 1". Screen/Pad Print.

7820 VinoVac™ Stainless Steel Wine Saver System (Pump and 2 Stoppers)

Sleek stainless steel pump with two bottle stoppers. Insert the stopper and place the pump over the bottle. Pump to extract the air from the bottle. Keeps wine flavorful until you serve it again (best within 3 days). Measures: 5" high x 3-1/4" across top x 1-1/4" dia.

Pkg. Code: BXR/PC. Imprint area on pump: 3" X 3/4". Screen/Pad Print or Metal Laser.

7819 Vino Vac™ Stainless Steel Wine Pump Only, Bulk

Pkg. Code: BU. Imprint area on pump: 3" X 3/4". Screen or Metal Laser.

7821 Universal Wine Saver Stopper by VinoVac™, Bulk

Universal Wine Saver Stopper is truly universal as it works with all the pumps on pages 100-101 (VacuVin®, VinoVac™ and UltraVac™). Black only. Pkg. Code: BU.

7822 Universal Wine Saver Stoppers by VinoVac™, Blister Pack

Includes two stoppers (7821). Black only. Pkg. Code: C, PC.

7772 **new**
(In Gift Pack Box)

7772
White
24



7772
Black
01



7774 (Box of 3
Assorted Colors)

**new**

7778



Black

7775



7820

Universal Stopper

7821 (Bulk)



7822



Vino Vac™

Wine Saver System

7810 VinoVac™ Wine Saver System, Boxed
Vacuum pump and two stoppers. The reusable VinoVac™ Wine Saver System pumps air out to reseal unfinished wine. Vacuum is released by touching the "Press" marking on the top. Pump measures 5-3/4" long. Pkg. Code: BXR.

Imprint area on pump: 3" X 3/4". Screen/Pad Print.



7811/7816

White 24

Burgundy 03

7811 VinoVac™ Wine Saver Stoppers, Blister Pack
Includes two stoppers (7816). Colors: Burgundy and White. Pkg. Code: C, PC.

7812 VinoVac™ Wine Saver System, Blister Pack
Includes one pump and one stopper. Pkg. Code: C, PC. Imprint area on pump: 3" X 3/4". Screen/Pad Print.

7816 VinoVac™ Wine Saver Stopper, Bulk
Colors: Burgundy and White. Pkg. Code: BU.

7835 ZOS Halo Wine Preserver, 5-Piece Bundle
Provides up to 2 months of wine preservation. Easy to use; no gas, no pumping. Simply insert the stopper and preserve in minutes. A flashing green light on top lets you know when your wine is preserved and remains steady green until the cartridge needs to be replaced with red light. The special ZOS cartridge is filled with a special formulated clay compound which absorbs the oxygen in the bottle. Cartridge lasts up to 15 times use. Takes two LR44 batteries. Includes: 1 ZOS preserver, 1 preserving cartridge, 1 storage holder and 2 extra preserving cartridges. Pkg. Code: BXR

7836 ZOS Oxygen Cartridges (2 Pack)
Pkg. Code: BXR

7818 Wine Saver (Pump and Stopper in One)
Reusable, all in one powerful vacuum pump and bottle stopper pumps air out to reseal unfinished wine. Bottle with stopper can then be stored in the refrigerator. Black and Burgundy. 4" high, 2" dia. Bulk and Box available. Pkg. Code: BU, C, PC.

Imprint area: top 1-1/4" X 3/4"; side 1-3/4" X 1/2" Screen/Pad Print.



Four short pumps evacuate an empty bottle of air!

new
7835



7818



Black 01

Burgundy 03

new
7826/7829

ULTRA•VAC™

Wine Preserver System

7826 Ultra-Vac™ Wine Preserver Set

This is a compact and very efficient wine vacuum system. Package includes one pump plus two stoppers. Black only. Pump: 5-1/2" long. Pkg. Code: BXR, PC. Imprint area on pump: 3" X 3/4". Screen/Pad Print.

7827 Ultra-Vac™ Wine Stoppers, Blister Pack - Black Only

Includes two stoppers (7828). Pkg. Code: PC.

7829 Ultra-Vac™ Wine Pump Only, Bulk

7828 Ultra-Vac™ Wine Stopper, Bulk

Color: Black. Pkg. Code: BU Imprint area on pump: 3" X 3/4". Screen/Pad Print.



new
7827/7828

ZOS
ZERO OXYGEN SOLUTIONS



2 MONTHS FRESH

new
7836



WINE ACCESSORIES



7832 Wine Shield (Wine Preserva) 6 Pak w/Insert Fork

7834 Wine Shield (Wine Preserva) 50 Pak w/Insert Fork

100% recyclable FDA approved material. Latest patented innovation in wine preservation. The Wine Preserva is a disk system which, when inserted in an opened bottle of wine, keeps the aroma and taste of the wine "at restaurant quality" for 5 days!! The Wine Preserva is simple, easy, and safe to use. Very successful in Australia with both professionals and consumers. The 6 pak set (7832) comes with 6 individually packed discs with one insert fork. The 50 pak set (7834) comes with 50 individually packed discs with one insert fork. 2-7/8" dia. disc. Pkg. code: BX.

7760 Private Preserve

Safe nitrogen, carbon dioxide, and argon layer blankets and preserves opened wine. Capacity: up to 120 bottles. Insert straw into the bottle and give it a few short bursts. Container stands 11-1/2" high. Pkg. Code: BU.

4017 Quick Seal Re-Corker

Handy two-piece device to re-insert a cork back into a wine bottle. Remove top cylinder from unit. Place cork inside. Replace top cylinder and push the cork into the bottle. 4-1/8" H X 1-7/8" dia. Color: Red. Pkg. Code: BU.

Imprint area on round base: 1/4" X 5/16". Screen/Pad Print.

7825 Electro VinoVac Wine Saver System™

Automatic vacuum pump for saving leftover wine. The trigger switch will be activated. Air will be extracted automatically. When extraction is completed LCD will show "OK". Then press the top bottom labeled "TEMP". It will display wine temperature in F° or C°. The lower button, "STORAGE TIME" indicates how many days and hours the wine has been stored. 3-1/8" H., 2-1/2" across top. Pkg. Code: BXR (with hanger tab). Imprint area on back: 1" x 1". Screen/Pad Print.

4015 Wine Bottle Re-corking Machine

Re-inserts previously removed cork into a wine bottle. Place cork partly into bottle top then pull both handles down. Two side clamps hold the bottle top in alignment. Steel plunger pushes cork in with one stroke. State laws permitting, could be used by restaurants along with 7870 Take Home Wine Bottle Bag (see pg.152) to re-seal a bottle to comply with "open container" laws. Stands 13" tall, 9-1/8" wide. Weighs 2.25 lbs. Pkg. Code: BU.



Just drop packet into wine bottle to preserve aroma and taste for 5 days!

7760



4017

7825



4015

New rubberized soft panel
on the front for better gripping!

7817



Black 01

Four short pumps evacuate an
empty bottle of air!



Burgundy 03

7817

Vino Grip™

Wine Saver System



7817 Vino Grip™ Wine Saver

The Vino Grip™ has a built-in powerful vacuum pump and bottle stopper to preserve and seal a bottle of unfinished wine. The Vino Grip™ has a rubberized soft panel on the front side with finger grooves to give you a firm grip when pumping. Low profile fits in refrigerator easily. Colors: Black or Burgundy with gray rubberized inset. Pkg. Code: BU, PC.

Imprint area: top, 1-1/4" dia.; side, 1-3/4" X 1/2". Screen/Pad Print.

Vino Grip™ has a very powerful pump. It also stays on the bottle in storage due to its compact, low profile above the bottle.

Vino Gauge™

Wine Preserver Pump



7838

Black 01



7838 Wine Pump & Stopper

This small and effective combination vacuum pump and bottle stopper takes up very little shelf space. Just pump until you meet resistance. Then stop. Your wine is ready to store away. 1-3/4" H, 1-3/4" W. Color: Black only. Pkg. Code: BU, PC.

Imprint area: 1" x 1-1/2". Screen/Pad Print.

7824

7823



7823 Vino Gauge™ Wine Preserver Pump, Black Plastic

7824 Vino Gauge™ Wine Preserver Pump, Stainless Steel

Quick, smart, and clever. Simply pump up and down after placing the unit into the bottle. As you pump and the vacuum inside the bottle increases you will see numbers beginning to rise into the "H-L" window. When finished pumping, those numbers are actually the date dial function. Just twist the handle to the date you sealed the bottle. Stands 2-3/8" high, compact enough for easy storage. Pkg. Code: BXR (hang tag).

Imprint area: 1-1/4" dia. Pad Print. 7824 on stainless steel body Imprint area: 1-1/4" x 1-1/4" Laser

ColorBlast Imprint area: 1-1/4" dia.



9340



9344


Metal
Casing

9343


Plastic
Casing

9340 Wine Thermometer

Wood handle. Fahrenheit and Celsius temperature measurement. 5-1/4" long. Pkg. Code*: BU. Imprint area: 1/2" x 1/4". Laser.

9343 AllTemp™ Select Infrared Wine Thermometer - Plastic Casing

9344 AllTemp™ Deluxe Infrared Wine Thermometer - Metal Casing

Durable plastic casing (9343) or silver casted metal casing (9344) with pocket clip. Infrared digital thermometer measures wine, Champagne, and food with temperatures ranges of -27 to 230 °F (9343) or 27 to 428 °F (9344). Both have Celsius option. You can measure the temperature without even opening the bottle or contacting the food. 3-3/8" long x 3/4" wide. Pkg. code: BXR. Imprint area: 1" x 1/4". Screen/Pad Print (9343) or Laser (9344).



1030 Cork Retriever

Removes corks that fall into the bottle. Stainless steel. 10-1/2" tall, 2-1/4" wide at handle. Pkg. Code: BXR (with hanger tab). Imprint area 1/2" dia. disk on top. Screen/Pad Print.

9341 Wine Collar Thermometer

This stainless steel faced LCD temperature indicator is activated only when the collar is placed around the body of the wine bottle. Chill to the desired temperature and serve. Temperature range from 48 to 149 °F (Fahrenheit only). 2-7/8" wide. Dial face 1-9/16" dia. Pkg. Code: BXR. Imprint area: 3/4" x 5/16". Metal Laser.

9347 Wine Bottle Thermometer Sleeve

The wine temperature is indicated when the sleeve is placed on a wine bottle. Ideal Fahrenheit temperature digital markings are indicated for a large variety of wines. Temperature range from 38 °F to 74 °F. Champagne, Prosecco, Sparkling, Sauvignon Blanc, Pinot Grigio, Gewurztraminer, Reisling, Chardonnay, Chablis, Rose, Pinot Noir, Merlot, Red Burgundy, Chianti, Cabernet Sauvignon, Syrah, and Zinfandel. Stands 1-1/2" H. Pkg. Code: BXR. Imprint area: 1" x 1". Laser.



9341

9347

1030



**Pushed Your
Cork In!?**
No Problem!



2613 Classic Tastevin (2612) with Chain Set

41" chain and clasp. Pkg. Code: BX
Imprint area on thumb rest:
1-1/4" x 1/2". Laser.



2613

2614 Classic Tastevin (2612) with Ribbon Set

Traditional ribbon is 39" long.

Pkg. Code: BX.
Imprint area on thumb rest:
1-1/4" x 1/2". Laser.



2614



2612

2612 Classic Tastevin, Silver Plated

Classic, deep-dish design. Heavy in construction and weight. Handle welded to both sides of cup and base for added strength. 3-1/4" dia. 7/8" deep cup. Weight: 3.5 oz. Pkg. Code: BX.
Imprint area on thumb rest: 1-1/4" x 1/2". Laser.



Made in Spain

2602

2602 Glass Tastevin-Made in Spain

Handy thumb hold on the side and finger hold on the bottom keeps tastevin steady. 4" dia. x 1-1/2" high. Pkg. Code: BXR (with hanger tag)
Imprint area on thumb rest: 1" x 1/2". Laser.

**new**

9334

9331

9372 Magnetic Bottle Stopper and Drip Collar Set

This magnetic stainless steel combo keeps both pieces together when not in use. Drip Collar (1-1/2" dia.) has felt lining. Stopper (1-7/8" H) has real cork base. Pkg. Code: BX. Imprint area on top: 1" dia. Laser.



9331

9334 Round Cork Wine Bottle Collar

This collar prevents wine from dripping down the side of the bottle. Inner hole has a felt liner. 1-1/4" inside dia., 2-1/8" dia. outside. Pkg. Code: BU.
Imprint area 1" x 1/2" Laser.

9372

**new**

9334

9353



9333

**9331 Wine Collar, Stainless Steel, Black Felt**

1-1/2" dia., 3/4" deep. Imprint area on outside rim: 1/4" high letters. Pkg. Code: BX, C, PC.
Imprint area 1-1/4" x 1/2". Laser.

9332 Two No. 9331 Wine Collars on a Blister Card.

Pkg. Code: PC.

9353 Magnetic Wine Collar, Two-Piece, Silver Plated

Pull apart the two sides of the magnetic closure and reattach them around the bottleneck. The black felt liner on either side will catch wine drips. 2-1/4" high, 2" wide. Pkg. Code: BX Imprint area: along the wider side, 5/16" high x 1/2" wide. Laser.

9333 Regal Wine Bottle Drip Collar, Silver Plated

1-5/8" dia. Felt liner. Fits most flange bottles. Pkg. Code: BX.

6285 Aromabar, Premium Edition (60 Set)

The diversity of wine aromas is fascinating. They range from delicate floral and fruity scents to strong animal aromas and sometimes even chemical smells. The origins of these aromas are different. Most stem from the grape variety itself, others occur during wine making, fermentation and the maturing of the wines.

6285



“Aromabar is an ‘incredibly’ valuable tool for the wine expert.”

-Bernhard Kirsten / Mosel, one of the Top 100 winemakers in Germany

The 60 aromas, each in a screw cap vial, are marked with numbers corresponding to the listing in each manual. Those categories are:

- White Wine. (12) Fruity aromas predominate in white wine.
- Red Wine. (12) Contains a wide range of aromas.
- Oaked Wine. (12) Wines are influenced when aged in oak barrels
- Wine Faults. (12) These are the cause of off-aromas.
- Specialties. (12) Fascinating aromas in certain wines.

Each category is separated into (5) boxes with its own manual. The remaining box contains a master manual for all categories. The wooden box comes with a removable wood lid to easily display the entire collection at once. A wide elastic band keeps it closed. Box measures 23-3/8" x 13-1/8" x 2-1/2" high. Pkg. Code: BX. Imprint 3" x 2". Laser. *ColorBlast* Imprint area on box: 4" X 4".

“The essences in Aromabar are very accurate.”

-Peter Steger, Sommelier

6286 Aromabar Starter Set, Red Wine (3 Set)**6287 Aromabar Starter Set, White Wine (3 Set)**

This is a beginning level of self-training in identifying and describing wine's aromatic character. Three selected scent vials are included in each tin. The scents have been selected by professional sommeliers and wine markers. The 6287 White Wine Set contains: Wild berries, Cherry, and Smoke. The 6286 Red Wine Set contains: Gooseberry, Pear and Peach. Tin measures 3-3/4" diameter by 1-1/4" high. NOTE: We can create custom sets of three using any essences in 6285 above. Please inquire. Pkg. Code: BX (tin).

6287



6286



“Aromabar is a MUST if you want to train your nose. I used Aromabar for years for my wine tastings and trainings.”

-Roland Birr, Enology

6168

**6168 Deluxe Essence Collection (40 Set)**

This exceptional common essence collection contains 40 glass vials in a hinged metal box. It includes a booklet with complete descriptions of each essence making it easy to relate wine aroma sensations with other similar odors. Hinged metal box 9-5/8" x 7-3/8" x 1-7/8". Pkg. Code: BXR. Imprint area: 4" x 2" Screen/Pad Print or Laser.

ColorBlast Imprint area: 4" X 2".

6167 White Wine Essence Collection (12 Set)

Twelve common essences found in white wine in glass vials. A booklet with complete descriptions of each essence makes it easy to relate wine aroma sensations with other similar odors. Hinged metal box 7-1/4" x 4-3/4" x 1-3/4". Pkg. Code: BXR. Imprint area: 3" x 1-1/2" Screen/Pad Print or Laser.

ColorBlast Imprint area: 3" X 2".

6166 Red Wine Essence Collection (12 Set)

Twelve common essences found in red wine in glass vials. A booklet with complete descriptions of each essence makes it easy to relate wine aroma sensations with other similar odors. Hinged metal box 7-1/4" x 4-3/4" x 1-3/4". Pkg. Code: BXR. Imprint area: 3" x 1-1/2" Screen/Pad Print or Laser.

ColorBlast Imprint area: 3" X 2".

6166



Red Wine

White Wine



6167



Close up View

BASE AROMA	SECONDARY AROMA	DESCRIPTIVE ESSENCE	EXAMPLE WINES
FRUITY	CITRUS	LIME ORANGE LEMON GRAPEFRUIT	CHARDONNAY CHENIN BLANC PINOT GRIGIO SAUVIGNON BLANC RIESLING
	BERRY	GRAPE BLACKBERRY BLUEBERRY RASPBERRY STRAWBERRY CRANBERRY RED CURRANT (CASIS) GOOSEBERRY BLACK CURRANT	CABERNET SAUVIGNON MERLOT PINOT NOIR SAUVIGNON MALBEC SHIRAZ SYRAH ZINFANDEL
	TREE FRUIT	PLUM CHERRY APRICOT PEACH MANGO APPLE PEAR QUINCE	CHARDONNAY CHENIN BLANC GEWURZTRAMMER MERLOT PINOT NOIR RIESLING SAUVIGNON ZINFANDEL PINOT GRIGIO BURGUNDY
	TROPICAL FRUIT	PINEAPPLE MANGO BANANA LICHEE NUT COCONUT ACID SWEETS	CHARDONNAY SAUVIGNON BLANC GEWURZTRAMMER
	MELON	PINEAPPLE MANGO BANANA	CHENIN BLANC GEWURZTRAMMER ZINFANDEL CABERNET
	PRESERVED FRUIT	RAISIN PRUNE FIG DATES	CABERNET SAUVIGNON PINOT GRIGIO

6134 Wine Sensory Chart™ - A Wine Aroma Guide

Recommended for use with Frammara's selection of Essences Collections, this tool will help to train your palate to the pleasure of the complex odors and aromas that create the character of wines. It helps develop a "tasting vocabulary." For instance if you detect Fruity, follow the chart outward to Berry to Melon and if Melon further categorize it as Watermelon, Honeydew or Cantaloupe. For each "Secondary Aroma" category, wine examples showing that particular characteristic are listed to the right. Laminated. 5-3/16" x 5-3/4" folded in thirds; 5-3/16" x 17-1/8" unfolded.

Copyrighted.

Pkg. Code: BU (each in a vinyl protective sheath).
Imprint area: 2-1/2" x 2." Screen/Pad Print.



6134



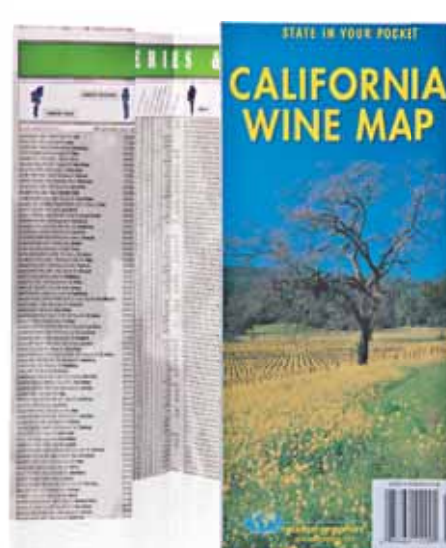
6153



6154



6155



Three Distinctive Wine Maps For Touring California Wineries

6153 Napa-Sonoma Wine Country Map and Guide

A 2016 laminated, gate-folded map of the wineries & vineyards of Napa and Sonoma from Healdsburg to Geyserville, with winery address/hours/phone; tasting rooms and gourmet grocery stores. Scale: 1:135,000. Folded: 4-1/4" x 12". Unfolded 25-1/2" x 12".

Pkg. Code: BU. Imprint area: Custom Color Label Available 2-5/8" X 1". Laser Color Jet.

6154 Santa Barbara, San Luis Obispo, Paso Robles Wine Country Map and Guide

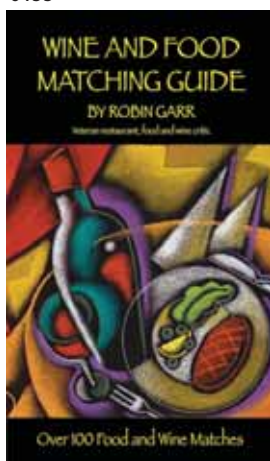
Wineries & vineyards throughout the area from Santa Barbara, San Luis Obispo to Paso Robles, with winery addresses, phone numbers and hours are shown in this 2015 laminated, gate-folded map of the wineries and vineyards in that area. Scale: 1:300,000 Folded: 4-1/4" x 12".

Unfolded 25-1/2" x 12". Pkg. Code: BU. Imprint area: Custom Color Label Available 2-5/8" X 1". Laser Color Jet.

6155 California Wine Map

A 2013 thematic road map of California showing all the appellation wine growing areas. On one side is a road map of California state at 1:1,175,000 with larger scale insets showing areas of particular interest, including: Temecula, South Central Coast, North Central Coast, Los Carneros, Lodi & Sierra Foothills, North Sonoma, Napa & Sonoma Valleys and Mendocino & Lake. The reverse of the map is a major index of Wineries & Vineyards featuring over 1,500 listings of wineries with their addresses, phone numbers & tasting, tour, opening and trade information. When completely unfolded the map measures: 36" x 27.5". Folded 4" x 9". Pkg. Code: BU. Imprint area: Custom Color Label Available 2-5/8" X 1". Laser Color Jet.

6133



6138



6132



6158



6133 Wine and Food Matching Guide by Robin Garr*

Reveals the appropriate wine selection for a large variety of different foods. Includes a section on measurements. 16 pages. 5-1/4" X 3-1/2". Packaged 60 pieces to a shrink-wrapped counter top display box. Pkg. Code: BU, C.

6138 Wine Tasting Journal

An easy-to-use reference that will help you score and record your wine tasting experiences. It includes an easy scoring system. 44 pgs. 5-1/4" X 3-1/2". 36 each to a shrink-wrapped counter display. Pkg. Code: BU, C.

6133



6138



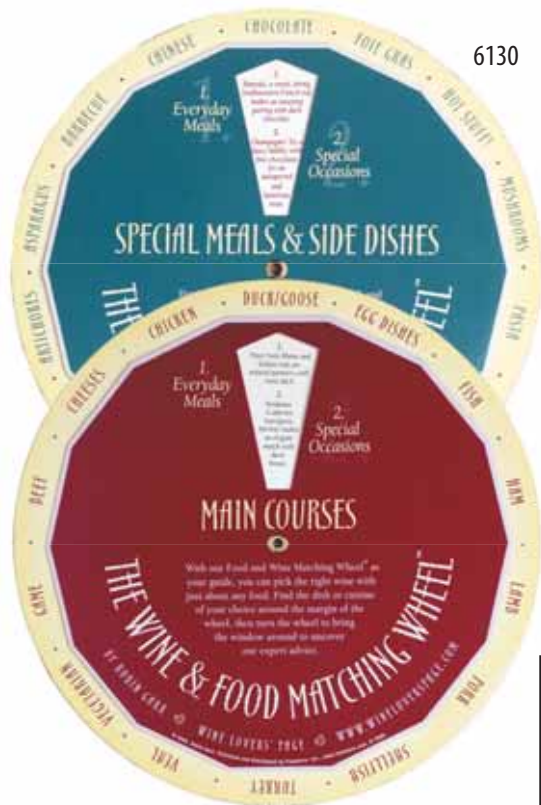
6132 Refrigerator Magnet Wine and Food Matching Guide

From main courses to special meals and side dishes this handy guide conveniently attaches to the refrigerator door. 9-1/8", 2-3/8". Pkg. Code: C. Imprint area: 1-1/4" X 5/16". Screen

6158 "Nose, Legs, Body!" by Len Napolitano

183 pages. Publisher: Wineology Press (June, 2013), wine columnist Len Napolitano felt like a self-conscious wine amateur until he cut through a web of peculiar wine terms and complex subjects. 5-1/2" x 8-1/2" Pkg. Code: BU

ADV. 22
Price ListWHL. 23
Price List



6130

Back

Front



Display box available.

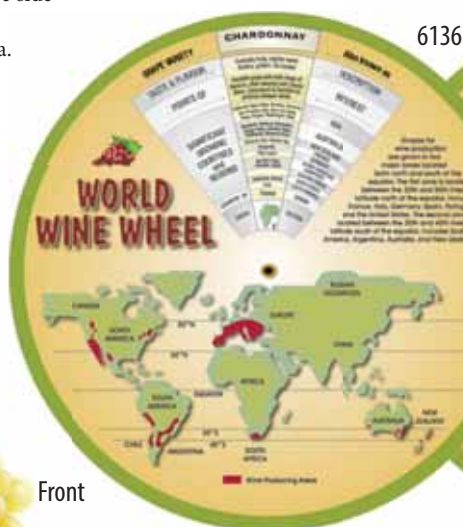
6130 Wine & Food Matching Wheel™ by Robin Garr

From salads to sushi, chocolate to cheese, rotate the window in the top wheel to a menu or food type selection to reveal an appropriate wine selection. Each wheel packed in an imprintable semi-transparent vinyl envelope with UPC code. Please inquire about customized wheels. 8" dia. Packaged 36 pieces to a counter top display (See above) or free display with 36 each. Pkg. Code: BU.

Imprint area on vinyl pouch: 2-1/2" X 2". Screen/Pad Print.

6136 World Wine Wheel and Wine & Food Matching Guide

One side displays 14 red and white wine grape varieties. For each varietal there is abundant information about taste and flavor and significant growing areas worldwide. The reverse side shows suitable matches for various food styles with selection of wines from around the world. 9-1/4" dia. Pkg. Code: BU.



6136

Front

Back



6137

Back

Front



Display box available..

© 2010

“Accurate and right-on combinations.”

- Oxbow Cheese Merchant, Napa, CA

6137 Wine & Cheese Pairing Wheel

Wine and cheese are a classic combination. Both are products of fermentation which draws them together. Features 40 popular cheeses. Two-sided. Each wheel packed in an imprintable semi-transparent vinyl envelope with UPC code. 8" dia. Packaging 36 pieces to a countertop display (See above). Pkg. Code: BU.

Imprint area on vinyl pouch: 2-1/2" X 2". Screen/Pad Print.

All Items On These Two Pages Are Copyrighted.

WINE ACCESSORIES



6122

6122 Blind Wine Tasting Kit with Storage Pouch (Pro Model)

Eight black polyester material wine bottle sacks are boldly printed with numbers 1 through 8 in red. For blind wine tastings, the bottles are inserted into the sack beforehand. Hook and loop straps go around each bottle neck. Each sack 13-1/4" high. Enclosed also is Blind Wine Tasting Scoring Sheet with a handy wine sensory chart on reverse side (can be photocopied). All items fit into a 600 denier polyester storage pouch (9" X 12") with zipper. Pkg code: BU. Imprint area: 2-1/2" X 1". Screen/Pad Print.

1020 Wood Taster Glass Serving Paddle

Presentation is the key in serving flights of wine, craft, domestic or imported beers or even cider in small tasting glasses. Most wine glasses fit comfortably on this rubberwood (an eco-friendly wood) paddle. It has four indented wells with an inside diameter of 2-3/8" for each well and a drilled hole for hanging. Paddle measures 17-5/8" x 3-7/8" x 11/16" thick. Pkg. Code: BU.

Imprint area: 3" X 1-1/4". Laser.

new
1020



Holds 8667, 8668, 8611, 8612,
8617, 8517, and 8536.

6123SET
SET OF 4

**6123SET Jute Blind Wine Tasting Sacks - Set of 4**

The gusset bottoms and adequate pull strings ties of these jute sacks well hide the bottle identity for a blind wine tasting. This set of four sacks are laser numbered 1 through 4. If more sacks are needed numbered from 5 on up, they can be laser engraved with those progressive numbers. 14" H, 6" wide when folded flat. Pkg. Code: BU. Imprinting: in addition to the numbers custom imprinting is available.

Jute Sacks are available without imprint on page 200.

6125

**6125 Wine Tasting Party Kit (Consumer Model)**

Three burgundy cotton wine bottle sacks are boldly embroidered with numbers 1 through 3 in gold. The attached cords are then tied around bottle neck. Each sack 13-1/4" high. Also in the kit: wine glass identifiers, 12 pencils, 12 invitations, "Quick Facts" sheet and rating pad. Pkg. Code: BXR (capped tube).

Can be customized
with any number or symbol