

**NEW FROM
UNIVERSAL**

Since 1842

UNIVERSAL®

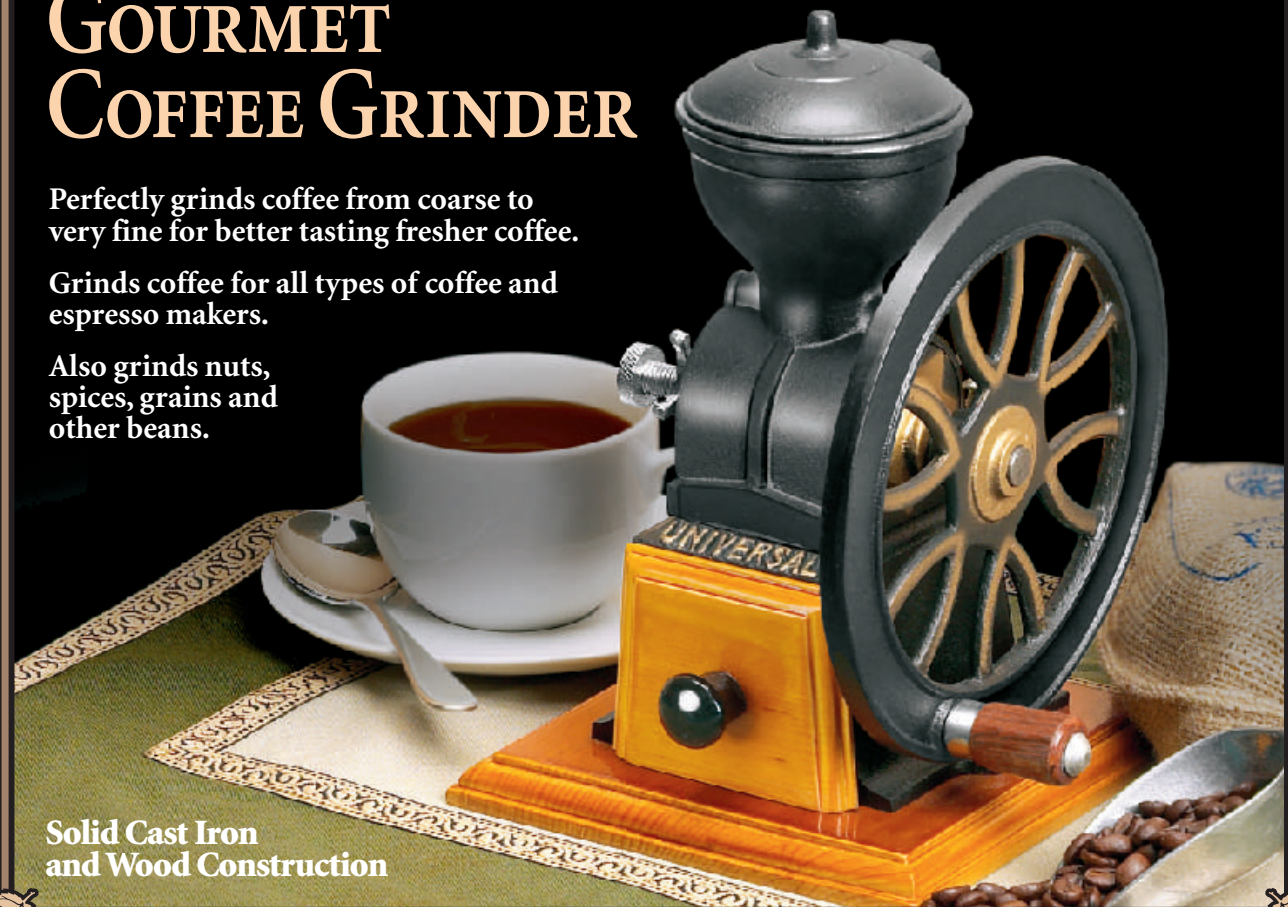
No. 109

GOURMET COFFEE GRINDER

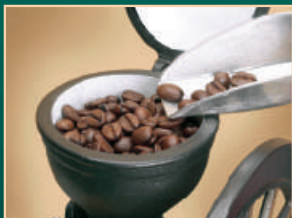
Perfectly grinds coffee from coarse to very fine for better tasting fresher coffee.

Grinds coffee for all types of coffee and espresso makers.

Also grinds nuts, spices, grains and other beans.



**Solid Cast Iron
and Wood Construction**



Covered Bean Hopper
Fill with your choice of coffee beans. The perfectly sloped chamber allows beans to be evenly and efficiently loaded for perfect grinding.



Grinding Adjustment Knob
Grinds from a coarse coffee to a fine espresso grind. Hardened steel blade grinds easily with minimal heat for better flavored coffee.



Wood Coffee Ground Drawer
Easily spoon coffee grounds from the solid wood constructed drawer. Drawer holds enough grounds for up to 10 cups of fresh coffee.



Classic Hand Grinding Wheel
Large cast iron wheel with hardwood handle for efficient grinding of coffee beans, nuts, spices or grains.