



Friends

LEGO® FRIENDS COLLECTION  
STORAGE & LUNCH



### **LEGO® FRIENDS**

LEGO® Friends is the story of five friends: Olivia, Andrea, Emma, Mia and Stephanie. They live in HeartLake City, a charming town built around a heart-shaped lake. Together they create the LEGO Friends Club to share their secrets, organize parties and help the people of the city. Each of the friends has a distinct personality and interests, such as animals, performing arts, invention and design and they are always ready for fun adventures!

LEGO Friends creates an exciting world in which girls can enjoy the beauty of building, role play and friendship.

LEGO Friends has taken the world by storm and proved that girls love LEGO building just as much as boys.

### **ROOM COPENHAGEN & THE LEGO GROUP**

Closely linked to the LEGO® world and its design, the LEGO range from Room Copenhagen takes the LEGO experience a step further with products that make storage and organising as well as school lunches, picnics and family outings part of the LEGO adventure. Made first and foremost with children in mind, the LEGO range by Room Copenhagen is sure to please parents as well as any adults with a soft spot for the LEGO world.

All products are made of BPA free plastics and fulfil market specific food (lunch) and toy (storage) safety regulations.

Room Copenhagen is proud to be an official LEGO Licensee.



[www.roomcph.com](http://www.roomcph.com)



## LEGO® Friends Lunch

### Lunchtime is also fun time

School children often forget all about their delicious lunch tucked away in the school bag. With the LEGO® Friends lunch boxes and drinking bottles, children will look forward to whip out the fun and playful lunch containers. With an oversized LEGO brick as the lid for the bottle, a cup at the bottom of the bottle and strong graphics, the sets are both practical and fun to look at.

### LEGO FRIENDS LUNCH BOX



**Art. no.** 4050 **Colli size** 6 **Material** PP, PE  
**Dimensions** 160 x 141 x 66 mm /  
 6.29 x 5.55 x 2.59 in

### LEGO FRIENDS DRINKING BOTTLE



**Art. no.** 4055 **Colli size** 6 **Material** PP  
**Dimensions** Ø 65 x 192 mm / Ø 2.65 x 7.56 in  
**Volume** 375 ml / 12.7 fl oz

### LEGO FRIENDS LUNCH BOX



**Art. no.** 4050 **Colli size** 6 **Material** PP, PE  
**Dimensions** 160 x 141 x 66 mm /  
 6.29 x 5.55 x 2.59 in

### LEGO FRIENDS DRINKING BOTTLE



**Art. no.** 4055 **Colli size** 6 **Material** PP  
**Dimensions** Ø 65 x 192 mm / Ø 2.65 x 7.56 in  
**Volume** 375 ml / 12.7 fl oz



## LEGO FRIENDS LUNCH SET



**Art. no. 4059 Colli size 11 Material** PP, PE  
**Dimensions** 200 x 67 x 192 mm /  
7.87 x 2.64 x 7.56 in





## LEGO® Friends Storage Brick System




### Turn tidying up into play

Keeping your kids' rooms reasonably tidy doesn't have to be a hassle anymore. The LEGO® Friends Storage Brick system makes it easy and fun for the kids to tidy up.

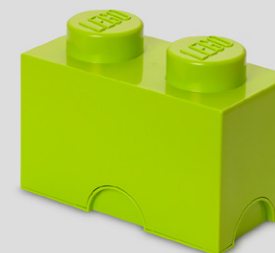
The oversized LEGO bricks are designed to stack, just like the original LEGO bricks. Use them to decorate, play, build and have fun or keep your toys sorted using them as storage boxes.




### LEGO FRIENDS STORAGE BRICK 1



**Art. no. 4001 Colli size 6 Material PP**  
**Dimensions** 125 x 125 x 180 mm /  
 4.92 x 4.92 x 7.09 in **Colors**   




### LEGO FRIENDS STORAGE BRICK 2



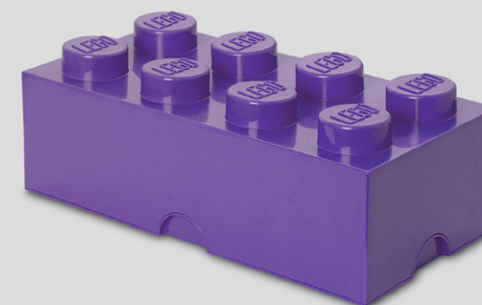
**Art. no. 4002 Colli size 6 Material PP**  
**Dimensions** 125 x 250 x 180 mm /  
 4.92 x 9.84 x 7.09 in **Colors**   




### LEGO FRIENDS STORAGE BRICK 4



**Art. no. 4003 Colli size 6 Material PP**  
**Dimensions** 250 x 250 x 180 mm /  
 9.84 x 9.84 x 7.09 in **Colors**   

### LEGO FRIENDS STORAGE BRICK 8



**Art. no. 4004 Colli size 3 Material PP**  
**Dimensions** 250 x 500 x 180 mm /  
 9.84 x 19.79 x 7.09 in **Colors**   





## LEGO® Friends Sorting System

### Sort, store & stack

The LEGO® Friends Sorting System contains 3 storage boxes, 1 sorting tray, 3 large and 6 small sorting box inserts. The sorting tray fits into all three storage boxes, and the sorting boxes all fit into the sorting tray perfectly. The LEGO Friends Sorting System will enable you to:

- Organize your LEGO elements in the sorting box inserts.
- Save your own creations in the larger storage boxes.
- Keep your building instructions safe in the small storage box.
- Use the lid to build everywhere.
- Stack the storage boxes on top of each other for minimum use of space.

## LEGO FRIENDS SORTING SYSTEM



**Art. no. 4091 Colli size 4 Material PP**

**Dimensions** (packaging) 385 x 303 x 278 mm /  
15.16 x 11.93 x 10.94 in **Dimensions** (stacked) 378 x  
295 x 462 mm / 14.88 x 11.61 x 18.19 in



Room Copenhagen A/S  
Overgaden Neden Vandet 19A 1414 Copenhagen K Denmark  
T: +45 7025 5252 F: +45 7025 5222 VAT no.: DK33041403  
[info@roomcph.com](mailto:info@roomcph.com) [www.roomcph.com](http://www.roomcph.com)