



GRAVOGRAPH

GRAVOTECH GROUP



Professional software for mechanical and laser engraving machines



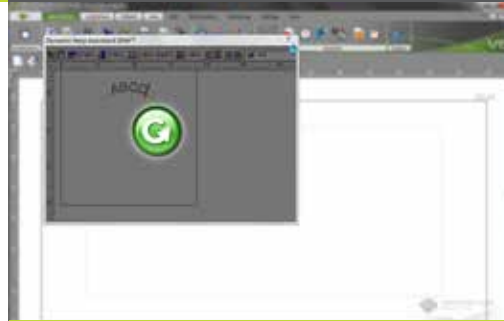
GRAVOSTYLE
SOFTWARE SOLUTION

www.gravograph.us

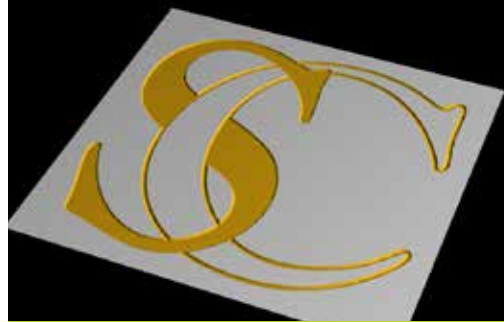
Gravograph designs rotary and laser engraving solutions along with Gravostyle™, the professional engraving control software.

This design and manufacturing software **simplifies the basics of engraving**, allowing beginner and professional engravers alike to get the best results from their equipment.

Gravostyle™ offers professional solutions for a variety of applications: from engraving letter box plaques to the design of graduated measurement instruments or the creation of photo gifts.



Dynamic Help Assistant™ video tutorials



Realistic preview



Step-by-step function assistant



Gravograph fonts

“

Over 250 high quality fonts, optimized for maximum productivity, Available on: www.fonts.gravostore.com

”

Gravostyle™, software is easy to understand and use

The new interface design is **focused on simplicity**. The toolbar menus **follow the chronological order of the job composition**. The intuitive graphic icons facilitate a **rapid understanding** of each function. The customizable palettes and shortcut bar **speed up access to your favorite tools**.

Learn fast

The step-by-step function assistants and the Dynamic Help Assistant™ (DHAT™) help you to make swift progress and be productive from the moment you get started.

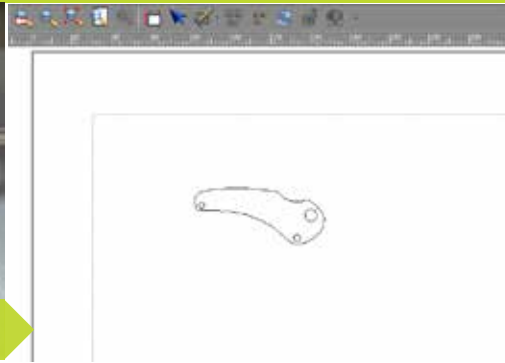
Work fast

For experienced users the composition and toolpath environments have been brought together. This offers you the option of **modifying your design when the toolpaths have been created**.

Take advantage of over 75 years of expertise in engraving solutions



Acquisition of the shape to be engraved using the Point & Shoot red light pointer



Braille production with the dedicated transcription function

The new Matrix function:

- Import of variables and logos
- Preview of the various plans
- Optimizes the number of plates
- Backup of custom sizes
- Simplifies template engraving



Your matrices guided step by step

Work in total harmony with your engraving equipment

In addition to parameters recommended on the basis of the engraved material, a number of interactive assistants help you to save time. The **Computip function** for example, advises you on the choice of cutter.

Similarly, **Point & Shoot** allows you to define an element of your composition directly through the use of a light pointer on the machine. The positioning and shape information are transferred to the software automatically.

Stand out from the competition and win new markets

- **Integrate Raster® Braille** into your signage applications.
- **Photostyle**: personalize your items with a high-quality photograph engraving.
- Easily cut out your printed media with **Print & Cut**.
- Add relief to your signs, trophies and other items with the **3D functions**.



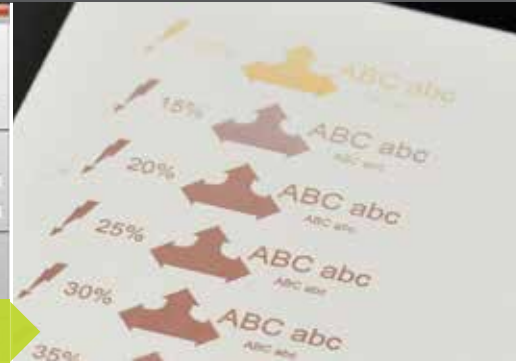
Use your material off-cuts

“ Every time you use the Matrix function it allows you to position your engraving jobs over a material off-cut. A gain for the of material and the environment!

”



Rapid control of the various performances on the material with the Calibration function.



Deep multi-pass engraving with Laser CAM



Dedicace™

“ Engrave any hand written message, signature, or drawing onto necklaces, bracelets, earrings, charms, rings, and more. Increase profits by adding this high-value, high-margin service to your shop! ”

Work more efficiently.

Quickly adjust your settings:

Gravostyle™ offers predefined machine and material parameters based on Gravotech's knowledge and expertise. You can also expand the database with your own materials. In addition, you have the option of storing the material engraving parameters with your composition.

Obtain optimum results on the first attempt regardless of the material engraved:

Starting to use a new material is simplified thanks to the calibration function. This allows you to control the rendering of various power/speed combinations in just a few minutes.

Laser CAM: deeper toolpaths

The software creates **optimized vector engraving toolpaths** for you, gaining precision and speed for deep engraving jobs.

Diversify your engraving jobs with the multiple functions



Interactive stamp assistant



Photograph engraving with Photolase



Print & Cut

Create your printed media in 4 steps

Step 1: Create your image and add markers at the dimension limits of the shape; trace the cutting line.

Step 2: Print your image flat, on a rigid base material.

Step 3: Using Gravostyle™ and your Gravograph machine, localize the printed markers. This step makes it possible to account for deformation related to printing.

Step 4: Cut your printed workpiece. The cut shape corresponds exactly to the printed model.

Creation of ink stamps:

The **interactive stamp assistant** guides you in the production of stamps with one of the numerous template models or a blank template. **Easily create complex models:** date stamps, number stamps, personalized stamps with logo and more.

Thanks to the **Nesting function** the positioning of each stamp is optimized to minimize material waste and to limit the emission of dust.

Photolase: modify and engrave photographs on a variety of materials.

Photolase allows you to preview your photographs on the chosen material in order to optimize the various laser engraving parameters.

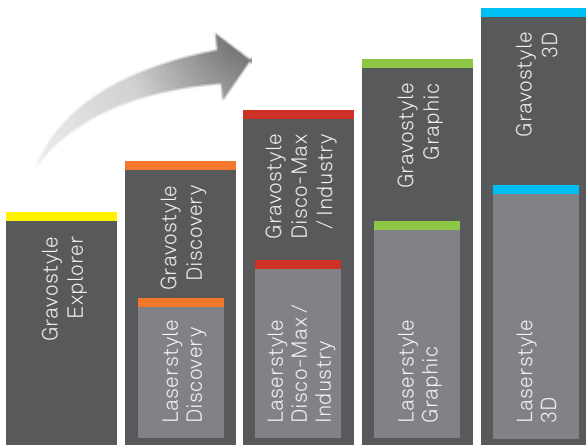
Identification and traceability

Identify your products and encode your data with a barcode, Data Matrix™ code, QR code and unique identification number (UID) generator with **Variables Management**.



Gravostyle™ is available in 6 levels, offering a wide range of business functions adapted to different activities.

Functions roll over and are included in higher levels.



New electronic licence system allows users to easily update their software online.

Functionalities available at all levels:

- Practical and intuitive interface
- Personalization of the work space
- Step-by-step function assistance
- Interactive and dynamic help with videos
- Machine accessories management: cylinder attachment and automatic plate feeder (APF) etc.
- Compatibility with True Type fonts
- Management of left/right and top/bottom script
- Engraving parameters saved with the job
- Zoom, print, grid and guide-line functions

LEVELS >

Explorer

[rotary]

Essential lettering capabilities



Discovery

[rotary + laser]

Go hybrid
Drive laser & rotary technology



CHARACTERISTICS

- Import of vector files (DXF, EPS, HPGL etc.) and images (BMP, JPG, PNG and TIF etc.)
- Plate Point & Shoot: makes it possible to define the engraving area directly on the machine
- Standard text functions
- Automatic centering function and centering texts on their plate
- Pre-routed engraving fonts
- Extensive choice of symbols
- Intuitive management of toolpaths by color with advice on the choice of tools
- On-screen preview

- Duplication of plates and lists of variables
- Management of plans
- PDF import and file export (PDF, DXF, EPS, HPGL etc.)
- Alignment and conversion tools
- Geometric shapes
- Laser control capacity using predefined parameters
- Calibration: simplified discovery of engraving parameters for new laser materials

OPTIONS

Personalization pack:

- Photograph processing Dedicace™ freehand drawing
- Additional pre-routed engraving fonts

- Braille production
- Font editor

APPLICATIONS

- Badges, letter box plaques and door plaques
- Photograph engraving
- Jewellery and gift market
- Pens
- Pet tags, Key rings
- Ornamental plaques
- Labels for valves and push buttons

- Engraving of plates in series runs
- List of variabilized names
- Small signage
- Funeral plaques
- Rubber stamps

DiscoveryMax / Industry

[rotary + laser]

Graphic

[rotary + laser]

3D

[rotary + laser]

DiscoveryMax
Productivity pack

Industry
Power, precision and productivity

Unleash your creativity

Take your engraving to a new dimension



- Scanning and vectorisation
- Point mode and bitmap editor
- 2D grooving by color
- Personalization font pack (over 100 fonts)
- Scripts (macro functions)

- Graduations and dials
- Scripts (macro functions)
- Long plate
- Measurement instruments
- Grouped import
- Import of external data (CSV, TXT, Excel, SQL, ODBC etc.)
- Shape duplication tools

- Nesting (material optimization)
- CAM module (advanced tool management)
- Powerful on-screen simulation and rendering
- Advanced Braille toolpath management
- Print & Cut module
- LED positioning module
- Laser photograph engraving module
- Cutter (die, etc)
- Shading (3D effect)

- Surface design and manipulation tools
- Styl!Art 3D model module
- 3D texture
- Sculpting tool
- 3D CAM toolpath management
- 3D preview tools
- All 2.5D functions come as standard

- Curved text

- Barcodes, Datamatrix™, QR Code and UID - unique identification with management of variables

- 2.5D toolpath for jewelry, punches and intaglio for signage
- Laser toolpaths for deep marking

- Scanning and printing of logos
- Trophy plaques
- Plaques with texts and logos
- Signage with texts and logos

- Machine plates
- Front panels
- Identification and traceability parts
- Printed circuits
- Linear and 2D barcodes
- Laser cutting of paper and cardboard

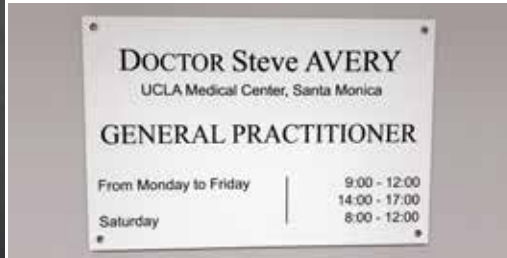
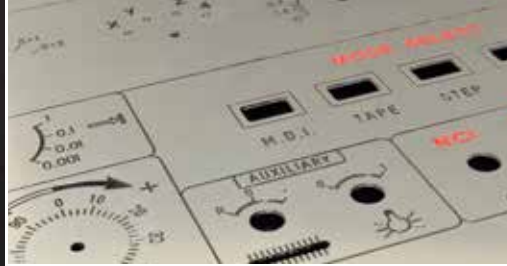
- Laser photograph engraving
- Model making
- Marquetry
- Hot irons
- Design and production of trophies
- Cutting out of printed signage
- Trade sign design

- 3D signage
- Display stands
- Embossing dies
- Food-grade moulds
- Furniture decoration
- Models and prototypes
- Trophies and awards
- Commemorative plaques

Applications

Since 1938, Gravotech brands have been global leaders in the design, manufacturing, sales and support of innovative solutions for engraving, marking and artistic modeling.

www.gravograph.us



Gravograph manufactures engraving equipment and the software that drives it.

Gravostyle™ simplifies the basics and pushes the limits of performance.

This software interacts with the entire range of Gravograph technologies: machines, engraving materials and consumables. It places Gravotech's know-how within reach of everyone.

Compatible with Windows®



The Gravotech Group represents a worldwide network present in 30 countries with more than 900 employees working around the clock to provide customers with exceptional permanent marking solutions. As a global leader in durable marking technologies such as engraving, laser, micro-percussion and scribing, we utilize our expertise to develop and market equipment, software and consumables for every application, from personalization to architectural signage and industrial part marking.

Gravograph, is a registered trademark of Gravotech, Inc.

2200 Northmont Parkway | Duluth, GA 30096

Toll Free: (1) 800.843.7637 | Tel.: (1) 770.623.0331 | Fax: (1) 770.495.3676

sales@us.gravotech.com

GravoStyle_Leaflet_1215 - Gravotech, Inc. reserves all rights on improvement and modification of its products.

This document is not contractual. ©Gravotech, Inc. - 2200 Northmont Parkway | Duluth, GA 30096

GRAVOGRAPH 

GRAVOTECH GROUP