

objecto





breathhtakingly
different



beyond object

We believe that functional products don't have to be boring. That's why every Objecto collection has been designed with its unique personality, but with the same attention to detail, and flawless technology.

These pages take you on our journey of infusing fabulousness and functionality. Our collection of hybrid humidifiers introduce our customers to a new ambiance further enhanced with the essential oil option. Objecto's first panel heater has a sleek high gloss exterior with a touch screen panel, and conveniently emanates a radiant smooth heat.

Objecto reveals its high end line of kitchen electronics with its Power Blender and The Kettle. Their bold designs and tech savvy performance will whet your pallet and leave you thirsting for more.

Objecto – Object to Ordinary



Pink

White

Brown

Purple



Hybrid Humidifier

When you need the safety and efficiency of hybrid technology in a diminutive package, look no further than H3. Its compact, organic form will blend seamlessly with any living space.

Features:

- Heats water to ensure a pure, natural mist
- Whisper quiet operation
- Removable anti-bacterial water tank
- 2-4 hour timer
- Automatic shut off upon empty tank
- 3 mist output levels
- Essential oil feature

Dimensions: 8" x 8" x 12"



White

Grey Metallic

Black



Hybrid Humidifier

An exquisite addition to the Objecto collection, the H4 takes our classic up a notch. The elongated figure & subtle change in curvature ensure that the same even mist provides your space with the best air.

Features:

- Matching remote control
- Heats water to ensure a pure, natural mist
- Whisper quiet operation
- Removable anti-bacterial water tank
- 2-4 hour timer
- Automatic shut off upon empty tank
- 3 mist output levels
- Essential oil feature

Dimensions: 9" x 9" x 15"



White



Black



Hybrid Spiral Humidifier

The hybrid humidifier with a twist. The perforated metal shell allows a soothing night lamp to shine through. Our award winning H5 spiral design will suit even the most modern living spaces.

Features:

- Heats water to ensure a pure, natural mist
- Whisper quiet operation
- Removable anti-bacterial water tank
- 2-4 hour timer
- Automatic shut off upon empty tank
- 3 mist output levels
- Essential oil feature
- Night lamp option

Dimensions: 7" x 7" x 14"

2014 **IN** innovationaward
winner



Grey Metallic

White

Red

Brown



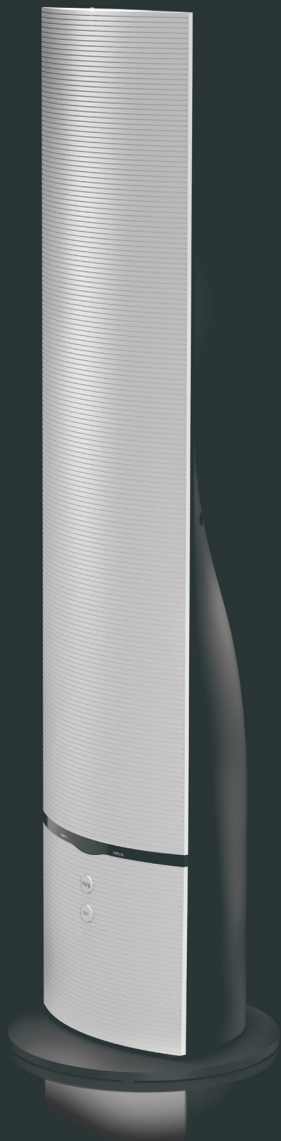
Ultrasonic Humidifier

Using ultrasonic technology, the H7 funnels room temperature mist through its sweeping organic silhouette. We've created a real statement piece not to be hidden away.

Features:

- Ultrasonic room temperature mist
- Whisper quiet operation
- Removable anti-bacterial water tank
- Floor standing base
- Automatic shut off upon empty tank
- 3 mist output levels
- Essential oil feature

Dimensions: 6" x 6" x 30"



White

Black



Hybrid Tower Humidifier

The uncompromisingly modern appearance of H9 is designed to be seen. The tall, clean lines and flared side profile look as innovative as the hybrid technology within. It can also be operated with the well hidden remote control.

Features:

- Remote control
- Heats water to ensure a pure, natural mist
- Whisper quiet operation
- Removable anti-bacterial water tank
- Floor standing base
- Automatic shut off upon empty tank
- 3 mist output levels
- Essential oil feature

Dimensions: 9" x 9" x 34"



White



Panel Heater

Our thin compact heater emanates and radiates a smooth even heat. T3 enhances the environment with a silent heating experience. The touch screen, temperature set & timer mode ensure easy control of temperature.

Features:

- Remote control
- Whisper quiet operation
- Auto temperature set
- Timer mode
- Child lock function
- Thermal cut off function
- Automatic shut off when tipped

Dimensions: 26" x 7" x 18"

2015 **IN**
innovationaward
finalist



Black

Red

Chrome

White

Lilac



The Kettle

The intelligent and neat cone shaped design lends The Kettle its sophistication. Partnering this time with Italian designers, Objecto's kitchen has an elegance that appeals to a diverse demographic. The kettle's technical minutiae along with the urban design rates our Kettle the hottest on a scale from hot to hotter.

Features:

360 degree power base and cord storage

Cordless stainless steel kettle lifts easily off base for easy carrying, pouring, and refilling

Backlit water gauge with viewing window

Auto shut-off when water reaches boil or when kettle is lifted off base

Removable and washable stainless steel lime scale filter.

56 fluid ounce capacity (7 cups)

1500 Watts

Dimensions: 8.5" x 7" x 12"



Black

The Power Blender

The Power Blender is certified for professional use and was developed in collaboration with a team of experienced chefs who have tested its features. It combines a unique and innovative blend of smart technology, design and versatility to provide maximum performance. The LED control panel, and Wi-Fi capabilities along with the corresponding app bring this modern innovation to the lead of its kind.

Features:

- DC brushless motor maintains engine torque
- Smart technology can control the main settings
- Stainless steel blade designed to achieve maximum performance and durability
- High strength BPA-free polycarbonate jug with four positions
- Automatic shutdown if lid is lifted from the jug
- LED touch panel with 7 pre-set programs
- Select up to 60 speeds and pulse function
- Stirrer stick with integrated thermometer allows you to check food's temperature

Dimensions: 10" x 10" X 20"

Objecto
935 Broadway
6th Floor
New York, NY 10010

T: 1(844)objecto

W: www.objecto.com

objecto

