



MAN★LAW

**MAN'S ONLY CHOICE FOR
ALL BBQ TOOLS AND
ACCESSORIES**



The dinosaurs are gone, so it is no longer possible to buy a steak too big.

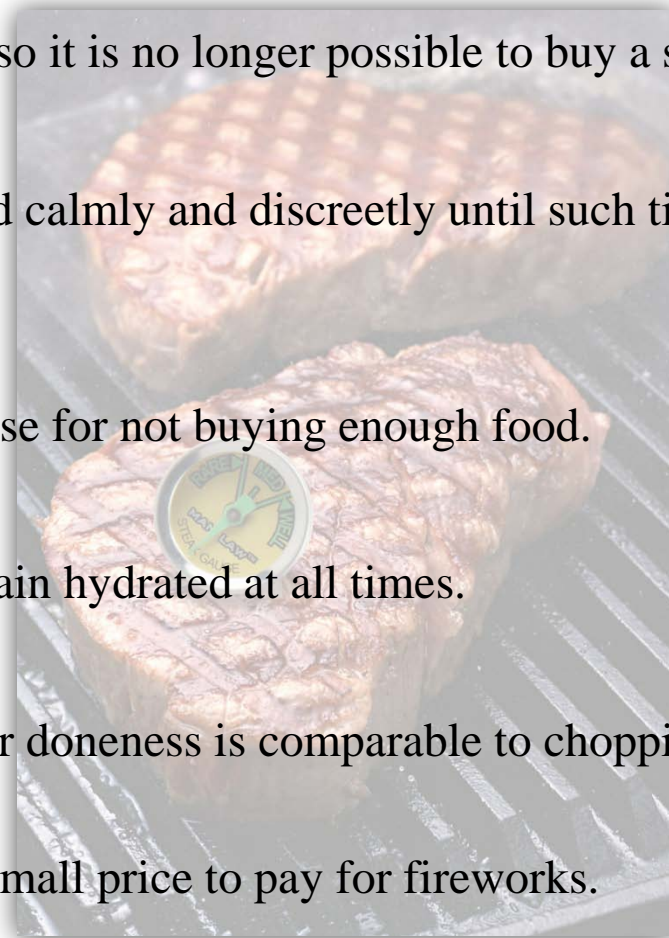
Flare-ups will be handled calmly and discreetly until such time as flames spread to a National Park.

A garnish is a bad disguise for not buying enough food.

The BBQ chef shall remain hydrated at all times.

Cutting meat to check for doneness is comparable to chopping down a redwood tree to find its age.

Two months salary is a small price to pay for fireworks.



5-PIECE BBQ PREMIUM WOOD HANDLE TOOLS SET

Spatula: (18.9")



- Heavy duty thick gauge stainless steel material
- 2.5mm thickness
- Premium wood handle
- 18.9" Spatula with serrated edge
- Set includes everything you need, Spatula, Tongs, Fork, Knife, and Silicone Basting Brush
- Extra long and thick handles for durability and safety.
- Lifetime warranty
- Built-in bottle opener to keep ya hydrated
- Hand washing is recommended

Tongs: (19.3")



Knife: (19.2")



Silicone Brush: (18.1")



Fork: (18.9")



MAN-H2

3-PIECE PREMIUM HARDWOOD HANDLE TOOLS SET

Fork: (18.9")



Tongs: (19.3")



- Heavy duty thick gauge stainless steel material
- 2.5mm thickness
- Premium wood handle
- Set includes everything you need: Spatula, Tongs, and Fork.
- Extra long and thick handles for durability and safety.
- Life time warranty
- Built in bottle opener to keep ya hydrated

Spatula: (18.9")



MAN-HY1

HEAVY DUTY 3-PIECE STAINLESS STEEL BBQ TOOLS SET

- Heavy duty thick gauge stainless steel material
- 17" Spatula
- Set includes everything you need: Spatula, Tongs, and Fork.
- Extra long and thick handles for durability and safety.
- Lifetime warranty
- Built-in bottle opener to keep ya hydrated



Tongs: (17")

Spatula: (17")

Fork: (17.3")

3 GRILL TOOLS



MAN-V8

3-PIECE STAINLESS STEEL BBQ TOOLS SET

GRILLING TOOLS

Fork: (18")



Tongs: (19")



- Diamond Plate design handles
- Heavy duty thick gauge stainless steel material
- 2.5mm thickness
- Spatula with serrated edge
- Set includes everything you need: Spatula, Tongs, and Fork.
- Extra long and thick handles for durability and safety.
- Built in bottle opener to keep ya hydrated
- Lifetime warranty

Spatula: (18")



4 GRILL TOOLS



MAN-FT1-S Foldable BBQ Spatula

GRILLING TOOLS

- 2.0mm thickness heavy duty gauge stainless steel
- Durable rosewood handle
- 17.75" Spatula with serrated edge
- Built-in bottle opener to keep ya hydrated
- Fold up design ensures easy storage
- Easy lock&release mechanism ensures the position whether open or closed
- User-friendly hanging loop





MAN-FT1-T

Foldable BBQ Tong

GRILLING TOOLS

- 2.0mm thickness heavy duty gauge stainless steel
- 17.5" extra long durable rose wood handle
- Fold up design ensures easy storage
- Easy lock&release mechanism ensures the position whether open or closed
- User-friendly hanging loop





MAN-FT1-F

Foldable BBQ Fork

- 2.0mm thickness heavy duty gauge stainless steel
- 17.7" Extra long durable rosewood handle
- Fold up design ensures easy storage
- Easy lock & release mechanism ensures the position whether open or closed
- User-friendly hanging loop



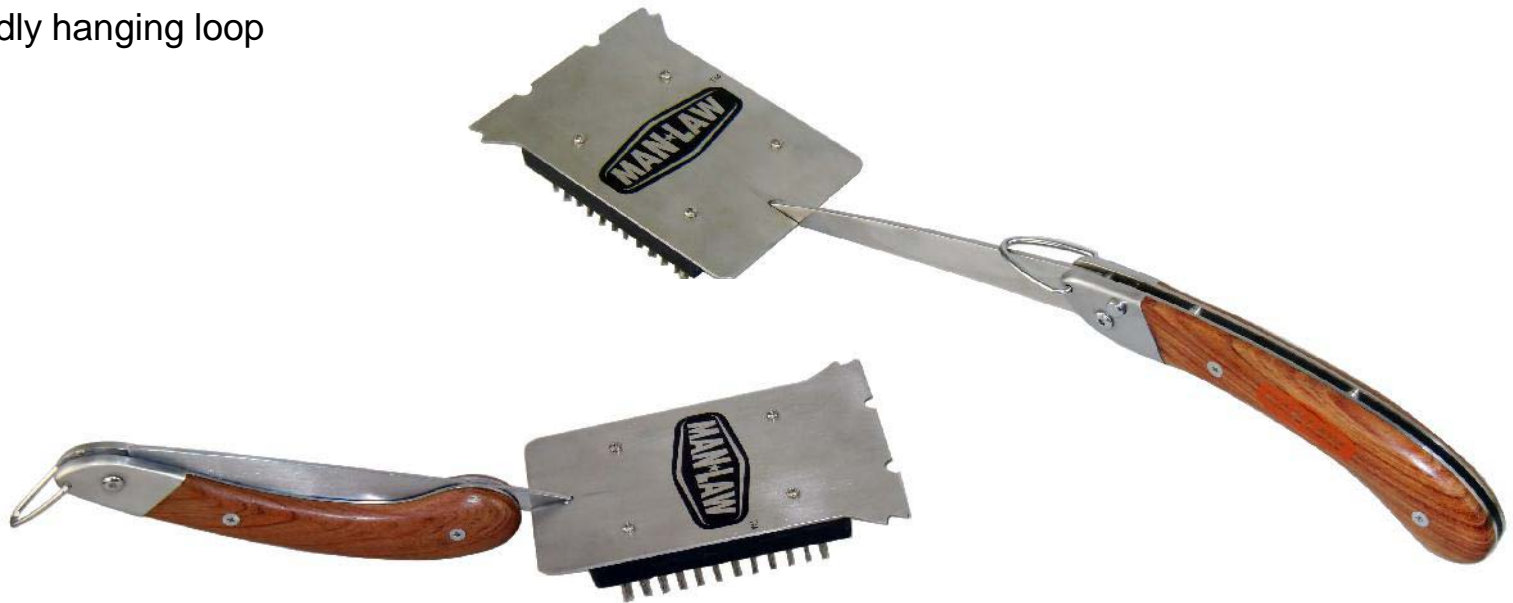


MAN-FT1-B

Foldable BBQ Brush

- Heavy duty gauge stainless steel
- 17.7" extra long durable rose wood handle
- Fold up design ensures easy storage
- Easy lock&release mechanism ensures the position whether open or closed
- User-friendly hanging loop

GRILLING TOOLS





MAN-SK1

4 PCS Steak Knife (Set of 4)

- Thick heavy gauge stainless steel
- Diamond plate handles
- Dishwasher safe
- Lifetime warranty



MAN LAW #3

**A GARNISH IS A BAD DISGUISE
FOR NOT BUYING ENOUGH FOOD.**



MORE

MAN-H6

BASTING BRUSH & POT

- Stainless Steel Pot
- 13' Extra long silicone basting brush keeps your hand cool and away from the heat
- Great design keeps things tidy



MAN-HY2

GIANT GRILL BRUSH

- 20.6" Giant long handle brush
- Stainless steel bristle
- Premium wood handle
- Heavy Duty scraper for easy cleaning
- Built-in bottle opener to keep ya hydrated





MAN-H4

STAINLESS STEEL SMOKER BOX

- Thick gauge stainless steel material
- Size: 14"L * 4.2"W*1.6"H



MAN-HY3

HOT DOG GRILLER

- Stainless steel material
- Premium wood handle
- Handle is removable while grilling
- Size: 15.5"L * 6.75" W
- Evenly cooks 5 Hot Dogs or Brats at once
- Hand washing recommended





MAN-H3

BBQ NON-STICK SKILLET BASKET



- Non-stick skillet basket
- 12.2" diameter
- Foldable handle for easy storage
- Rounded premium wood handle





MAN-V1

HAMBURGER BBQ BASKET



- 22" Extra long handle
- Durable metal hamburger basket
- Rounded premium wood handle



MAN-H5

TRIPLE KABOB BASKET

- Durable metal Kabob Basket kabob basket
- Rounded premium wood handle
- Long handle so your fingers stay cool

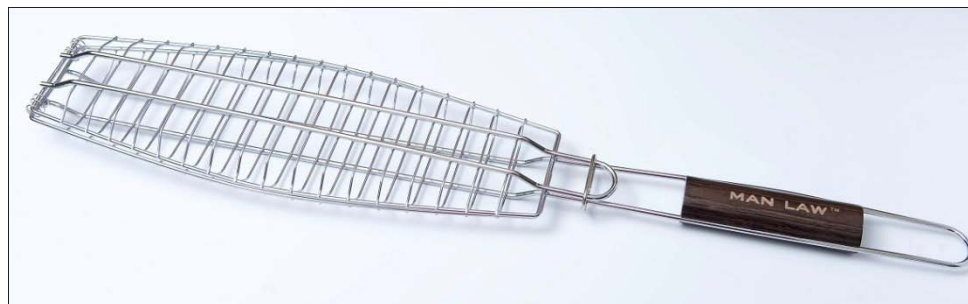




MAN-V2

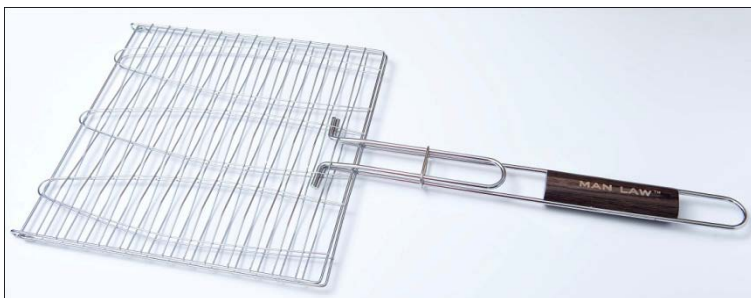
FISH BBQ BASKET

- 27" Extra long handle
- Durable metal Fish Basket
- Rounded premium wood handle



MAN-V3

TRIPLE FISH BBQ BASKET



- 23.5" Extra long handle
- Durable metal Fish Basket
- Rounded premium wood handle
- Holds three fish at once

YA DON'T WANT TO
MESS WITH A GUY
COOK'N ON THE GRILL

The word "MORE" is written in a large, bold, black font, partially overlapping a yellow circular graphic with a paint-splatter effect and a dripping paint effect at the bottom.

MAN-V4

CORN BBQ BASKET



- 19.5" Extra long handle
- Durable metal Corn Basket
- Rounded premium wood handle
- Grill four cobs at once

MAN-V7

JALAPENO ROASTER

- Size: 11.2" x 5"
- Heavy gauge stainless steel material
- Holds 20-jalepenos upright
- This roaster makes it a snap to cook up a batch of tantalizing treats

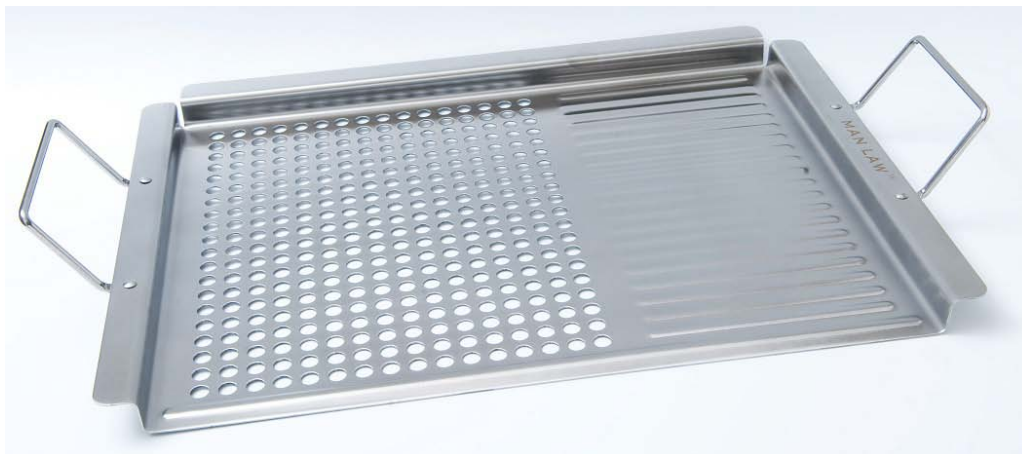




MAN-V5

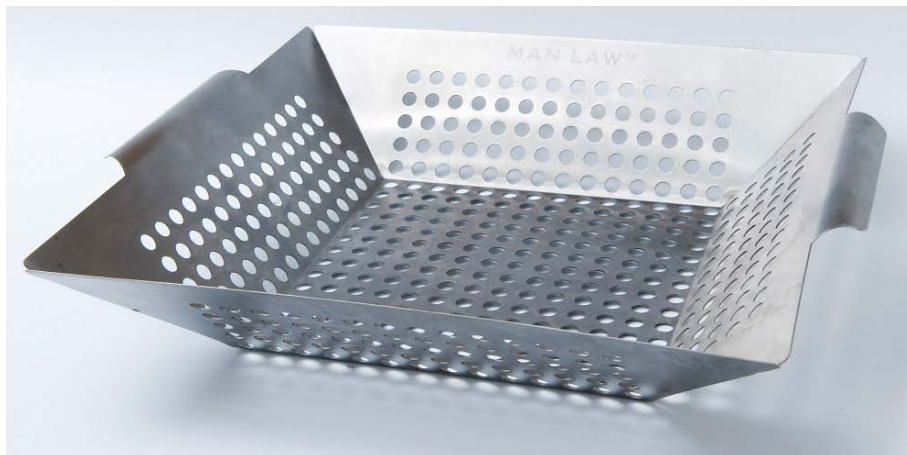
GRILL TOPPER

Size: 20.6" x 12.7"
Thick gauge stainless
steel material



MAN LAW #3

A GARNISH IS A BAD DISGUISE
FOR NOT BUYING ENOUGH FOOD.



MAN-V6

GRILL WOK

Size: 13.4"L*11.8"W

Thick gauge stainless steel material

MAN-V9

RIB RACK

- Size: 14.5"L * 11.75"W
- Non-stick coating
- Heavy gauge stainless steel
- Metal construction with Anti-rust surface
- Efficient upright design leaves you plenty of extra room on your grill surface





MAN-V10

BBQ WING RACK

- Can cook 12, wings, thighs, or Chicken legs evenly.
- Removable grill pan
- Folds for easy storage
- Heavy gauge stainless steel
- No more need to flip 'em over

**MAN
LAW 4**

**Two months' salary
is a small price
to pay for
fireworks.**



MAN-BC2 Beer Can Chicken

- Stainless steel construction
- The canisters hold your favorite liquid and spices. The tray can be used to roast your vegetables and collect the natural juices of the chicken.
- Filling canister with liquid, helps result in moist and tender chicken with incredible flavor
- Detachable canisters enables separate use of the grill pan
- Dishwasher safe





MAN-K1 Salt & Pepper Shaker

- 19" Extra long handle keeps your hands away from the heat
- Satin finish
- Remove the salt & pepper shakers from the handle for table use
- Shakers detach from the handle for easy refilling and cleaning
- Full high quality stainless steel



THE CHEF
HAS BIGGER
ISSUES ON HIS
MIND THAN
THE SPECIFIC
HUE OF PINK INSIDE
YOUR CHEESEBURGER.



MAN-PR1 Potato S.S. Rack

- Size: L17.75" X W3.75" X H2"
- Premium stainless steel material
- Piercing stainless steel blades provide for more evenly cooked potatoes
- Bake/grill 4 potatoes at the same time
- Dishwasher safe





MAN-CH1

Cast Iron Grill Humidifier(Set of 2)

- Size: L11.7" X W2.1" X H1.85"
- Pre-seasoned
- Increase humidity in the grill
Food retains moisture, natural juices
- Add wine, beer or water with your own spices for your own unique flavors
- Set of 2
- Hand wash only





MAN-CP1 Cast Iron Grill Pot

- Pre-seasoned
- Heavy-duty cast-iron
- Excellent heat distribution and retention
- Bowed cast-iron side handle and helper handle
- Use on the grill, stove top or campfire
- Hand wash only



**MAN[#]
LAW 4**

Two months' salary
is a small price
to pay for
fireworks.



MAN-CP2

Cast Iron 10" Skillet

- Pre-seasoned heavy cast-iron skillet
- Ready-to-use
- Excellent heat retention and even cooking
- Two handles for heavy lifting
- Use on the grill, stove top or campfire
- Hand wash only



Copyright © Alex Lee. UDesign Group



MAN-CG1 Cast Iron Reversible Griddle

- Size: L22"X W10.4" X H0.90"
- Pre-seasoned
- Flat on one side and ribbed on reverse for indoor or outdoor cooking
- Retains heat very well and distributes it evenly
- Use on the grill, stove top or campfire
- Hand wash only



Copyright © Alex Lee, UDesign Group



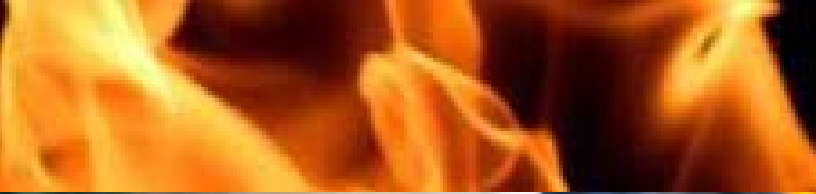
MORE

MAN-CP3

Cast Iron 12" Skillet

- Pre-seasoned heavy cast-iron skillet
- Ready-to-use
- Excellent heat retention and even cooking
- Two handles for heavy lifting
- Use on the grill, stove top or campfire
- Hand wash only





MAN-CP4 Cast Iron Grill Press

- Size:L9.0"X W5.1" X H3.5"
- Pre-seasoned
- Heavy-duty cast-iron base and "cool grip" chrome-plated spiral handle
- Hand wash only



**MAN[#]
LAW 7**

The collapse of a
lawn chair by someone
sitting in it is
only funny if it's
someone else



THERMOMETERS

DIGITAL BBQ TONGS SIDE VIEW



- 7 Preset meat types: Beef, Veal, Lamb, Pork, Poultry, Turkey, and Burger
- 5 second quick response time
- Temperature range: 32° - 392°
- Detachable LCD display for easy cleaning
- Backlit display is perfect for night grilling
- Audible alarm



28 GAUGES



MAN-T343BBQ

STEAK GAUGE SERIES WITH GLOW IN THE DARK DIAL

- Dial face and pointer glow in the dark
- Set of 4
- Four different dial faces for personalized grilling
- Gauge indicates Rare, Medium, or Well
- Premium grade stainless steel
- Dial size: Diameter 0.8"
- Dishwasher safe



MAN-T343BBQ

POTATO GAUGE SERIES WITH GLOW IN THE DARK DIAL



- Dial face and pointer glow in the dark
- Set of 4
- Gauge indicates when your potatoes are done
- No need to cut or squeeze your potato
- Premium grade stainless steel
- Dial size: Diameter 0.8"
- Dishwasher safe

MORE

29 GAUGES

MAN-T387BBQ

GRILL SURFACE GAUGE

- Dial size: Diameter 2.2"
- Stainless steel housing
- Good for any cooking surface
- Wide temperature range:
- 100°F ~ 800°C
- Raised tabs so you can easily move it around your grill
- Stainless steel construction



ET578BBQ

DIGITAL BBQ INSTANT READ MEAT GAUGE

- 7 pre-programmed meat types: Beef, Veal, Lamb, Pork, Poultry, Turkey, and Burger
- Selectable F/C
- Temperature range: 32°F ~ 392°F
- 5-second quick response time
- User set alarm temperature
- Extra long probe
- Audible alarm
- Auto power off
- Battery Included

MAN-ET212

BBQ HOOK GAUGE

7 pre-programmed meat types
Beef, Veal, Lamb, Pork, Poultry, Turkey, and
Burger

Audible alarm

Extra long stainless steel hook

Detachable LCD display for easy cleaning

User set alarm temperature

Backlit LCD display

Batteries included

Selectable °F/°C

Auto off



MAN-E374BBQ

DIGITAL READ INSTANT GAUGE

- 5 second quick response time
- Hold function
- 49°F ~ 392°F
- Backlit LCD display
- Auto off
- Premium grade stainless steel probe
- Min/Max feature
- Water resistant IPX4

Hold function

Selectable °F/ °C

Battery and sheath included



MAN-T816CBBQ

INSTANT READ GAUGE WITH GLOW IN THE DARK DIAL

Dial size: 1.6"

Premium grade stainless steel

Dishwasher safe

Glow in the dark dial and pointer

Wide temperature range:

0°F ~ 220°F

Dishwasher safe

NSF listed

MAN-T720CBbQ

MEAT GAUGE

GLOW IN THE DARK DIAL

Glow in the dark dial and pointer

Dial size: 1.6"

Large dial for easy reading

120°F ~ 210°F

Stainless steel probe

Stainless steel construction

Dishwasher safe

Temperature guide included

NSF list



MAN-T720BBQ

DEEP FRY THERMOMETER



- Dial size: Diameter 2.2"
- Target temperatures listed for oil and poultry
- 12" extra long stainless steel probe
- Glow in the dark dial and pointer
- Extra large easy to read dial face and pointer
- Wide temperature range
- Pot clip for hands free use
- Stainless steel housing



MAN-T702BBQ

GRILL/SMOKER GAUGE GLOW IN THE DARK DIAL

- Glow in the dark dial and pointer
- Temperature range: 50°F ~ 500°F
- Large easy to read numbers
- Dial size: 2.2"
- Stainless steel housing
- Great for adding or replacing a gauge in your grill or smoker



**MAN #7
LAW 7**

**The collapse of a
lawn chair by someone
sitting in it is
only funny if it's
someone else**

EVERYTHING ELSE

NOT FOR ANY 'OL BBQ!

MAN-Y1

BBQ GRILL LIGHT

- 12 Super-Bright LED Bulbs
- Adjustable screw clamp or magnetic base
- Extra long flexible arm up to distance 23"
- Weather resistant
- aluminum construction

MAN LAW #8

A PROPER SEAR NEGATES ANY HARMFUL EFFECT OF A STEAK FALLING ON THE GROUND





MAN-F378BBQ

TWIST FLASHLIGHT WITH TRIPOD CLIP

ONE
MORE
GADGET



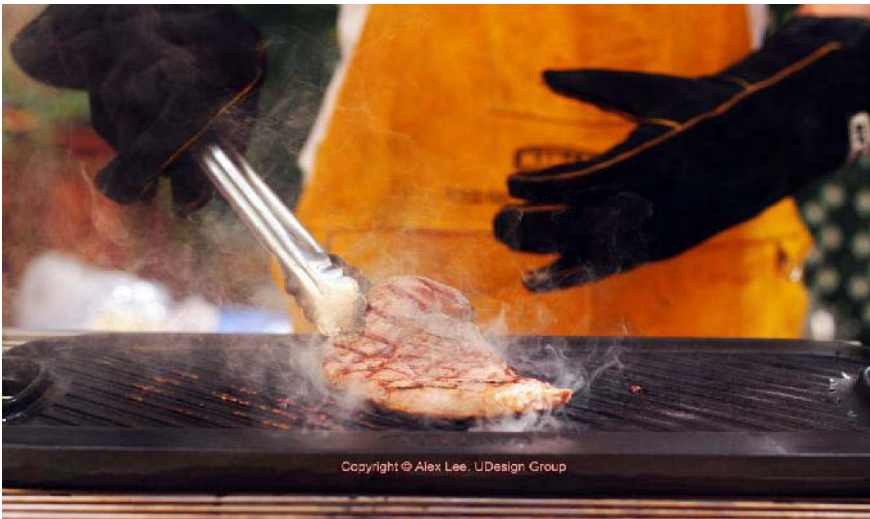
- Battery-free flashlight
- Twist handle 10 seconds for 5 minutes of light
- Three super-bright LED bulbs
- Flashlight lasts up to 100,000 charges
- Compact, lightweight and durable
- Terrific for auto and home emergency kits
- Great for any MAN's BBQ
- Powerful magnetic feet and swiveling legs let you attach it to anything
- Flashlight clips in or out for adventures near and away from the grill
- Super capacitor as energy storage
- US PATENT 20070159823A1



MAN-LG1

14" Leather Gloves

- Extra protection and heat resistant up to 500° F
- Flame resistant
- Anti-abrasion
- 14" gauntlet for protecting hands and forearms from the heat



Copyright © Alex Lee, UDesign Group



MAN-LA1 Leather Apron

- Size: L35" X W22"
- Protection from chest to above knee
- Specially tanned leather provides an effective heat shield
- Riveted reinforcement guarantees long-term durability
- Adjustable strap for a better fit
- Two over-sized pockets for extra storage



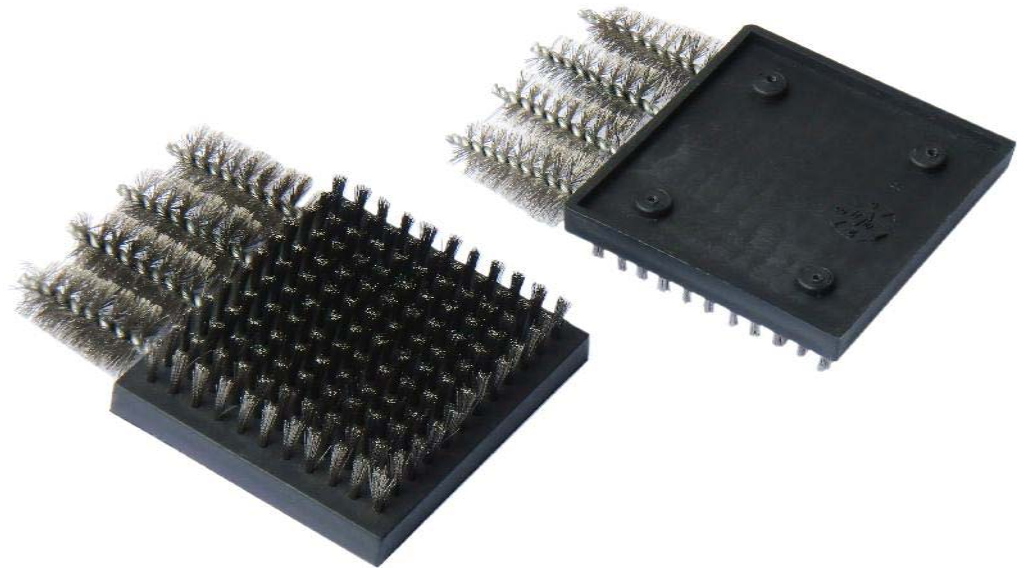
YA DON'T WANT TO
MESS WITH A GUY
COOK'N ON THE GRILL



MAN-HY2-RH 2 Pack Replacement Heads

ONE
MORE
GADGET

- Stainless steel bristles
- Easy installation and removal
- Replacement screws included



MAN LAW #8

A PROPER SEAR NEGATES ANY HARMFUL
EFFECT OF A STEAK FALLING ON THE GROUND

For more information on MAN LAW BBQ Tools and Accessories contact,

Parasia International LTD
6050 Main St. Ste 101
Rockford, MN 55373
763-267-7900 / 763-267-7902 fax
ehalberg@parasia-usa.com
sales@parasia.com.hk
www.parasia-international.com
www.manlawbbq.com

**MAN[#]
LAW 9**

**The cheaper the beer
the more loudly you
should say
how cold it is.**



Parasia
International Ltd.

WWW.MANLAWBBQ.COM



39 CONTACT US