

# DAEWOO RETRO SERIES

0.7 MWO



Retro Combos



2.8 REF



4.4 REF



# MODEL

KOR-7LRUEM/W/R/B

DAEWOO 

## 0.7 Cu. Ft. – Retro Microwave Oven with USB Charger



### FEATURES

- Concave Reflex System (C.R.S)
- 4 Auto cook menu
- Two-way defrost
- Zero Standby Function
- 5 microwave power levels
- Child safety lock function
- USB Chargers



MODEL		KOR-7LRUEW / M / B / R
Cavity volume		0.7 Cu. Ft
Power Supply		120V/60Hz
Power Output		700W
Dimension W x H x D (Inches)	Unit	17.6 x 10.6 x 12.7
	Carton	19.4 x 12.3 x 14.8
Weight (lbs)	Unit	23.4
Container QTY		952 sets / 40ft HQ

# MODEL

FR-028RCNW (Mint, Red, and Black FR-028RCNM, FR-028RCNR, FR-028RCNB)



## 2.8 Cu. Ft. – Retro Classic Compact Refrigerator



○ Cream White



Soft Dial & Easy Control



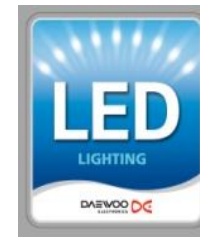
Sliding Drawer



Metal Deco Shelves



Fresh Drawer



LED Lighting



Real Wire Bin

● Mint Green

● Pure Red

● Piano Black



MODEL		FR-028RCN*
Dimension W x D x H (inches)	Unit	19.2 x 21.6 x 28.3
	Carton	20.5 x 22.7 x 30.5
	Over-Packing	21.3 x 23.5 x 32.0
Weight (lbs)	Unit / Carton / OP	48.5 / 52.9 / 68.0
Container QTY		276 units / 40ft HQ
Energy Class		Energy star
Door Opening		Right side hinge

# MODEL

FR-044RCNW (Mint, Red, and Black FR-044RCNM, FR-044RCNR, FR-044RCNB)



## 4.4 Cu. Ft. – Retro Classic Compact Refrigerator



● Mint Green



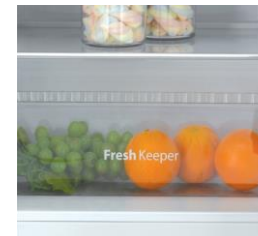
Multi Compartment



Secret Slim Bin



Metal Deco Shelves



Fresh Drawer



LED Lighting



Real Wire Bin

○ Cream White

● Pure Red

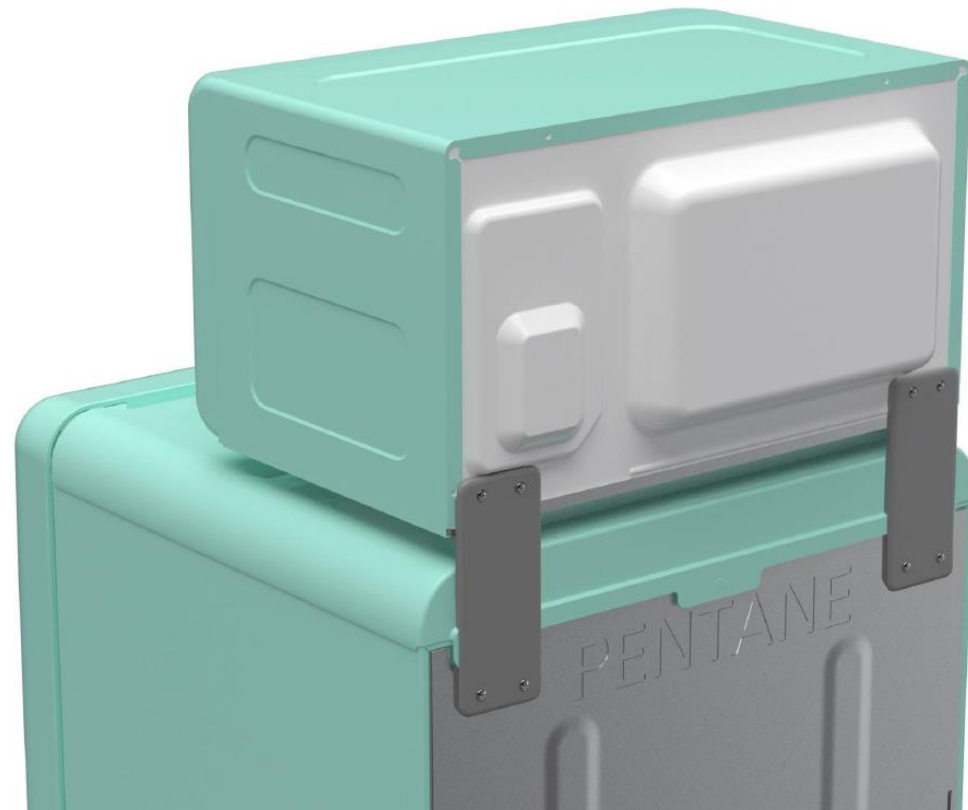
● Piano Black



MODEL		FR-044RCN*
Dimension W x D x H (inches)	Unit	19.2 x 22.8 x 36.1
	Carton	20.5 x 23.8 x 37.8
	Over-Packing	21.3 x 24.5 x 39.8
Weight (lbs)	Unit / Carton / OP	61.7 / 66.1 / 78.0
Container QTY		152 units / 40ft HQ
Energy Class		Energy star
Door Opening		Right side hinge

## Retro Combos (0.7&2.8 / 0.7&4.4)

---



# MODEL

0.7 & 2.8 / 0.7 & 4.4

DAEWOO 

## Retro Combos



### Combo Features

- ✓ Eco Plug - restricts electrical draw, requiring less amps to operate both MWO&REF after connected by the Eco Plug
- ✓ Bracket secures microwave oven to safely stay on top of refrigerator

